

N¹/₄ Corner
Section 24

441 ft
(From plat survey)



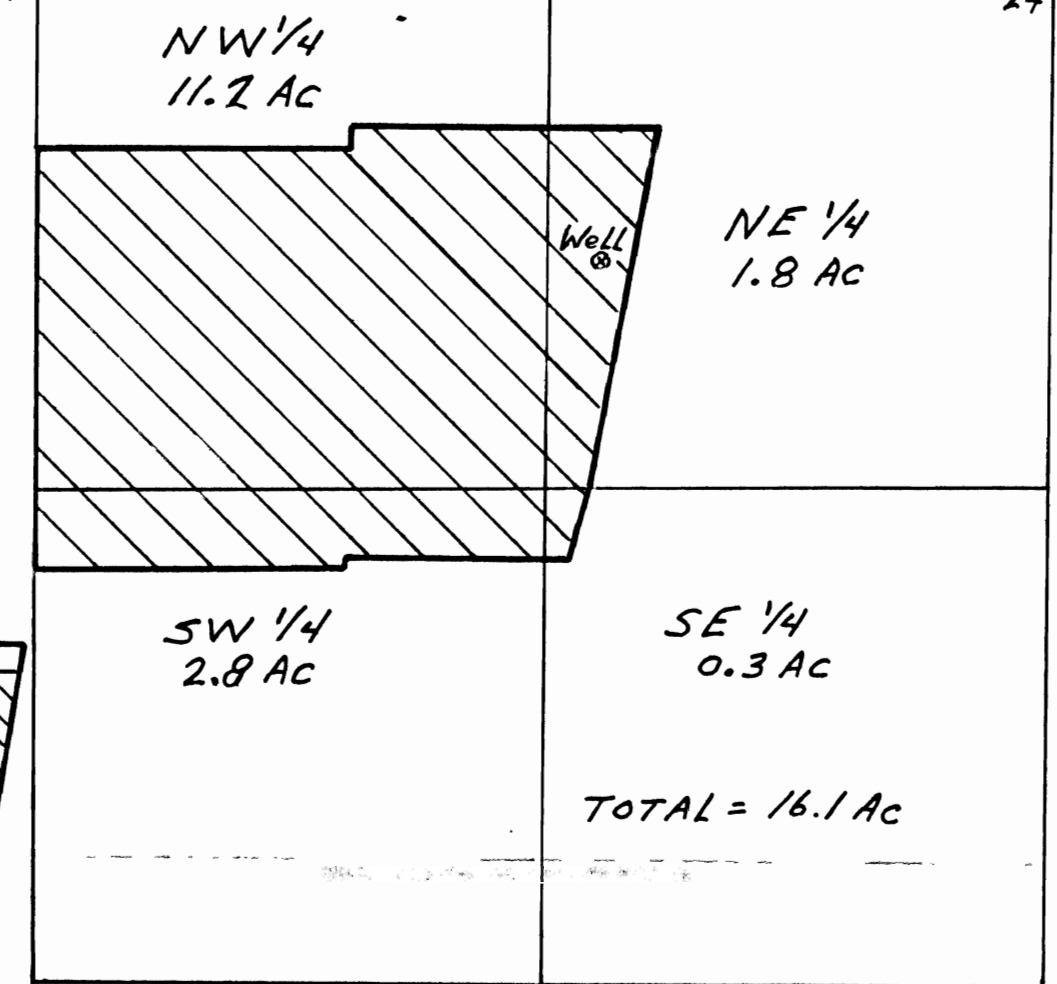
1620 feet (photo tie)
(695 ft South, 1465 ft East, N¹/₄ corner)

DETAIL MAP ARRANMORE HOMEOWNERS ASSOC.

Scale: 1 inch = 100 feet

N¹/₄ Corner, Section 24, T1S, R1W, W.M.

13.1
24.1



LOCATION MAP
Scale: 1 in = 500 ft



Legend:

- Irrigated Area
- Paved Walkway
- Buried Mainline

WATER RIGHT - FINAL PROOF SURVEY
 ARRANMORE HOMEOWNERS ASSOC.
 7185 SW Chapel Lane
 Portland, OR 97223
 File: G-13416 Permit: G-12278

by: H&R Engineering, Inc.
 2340 NW 15th ST.
 Redmond, OR 97756



This map prepared for the purpose of identifying the location of water right only, and is not intended to provide legal dimensions or location of property ownership lines.