

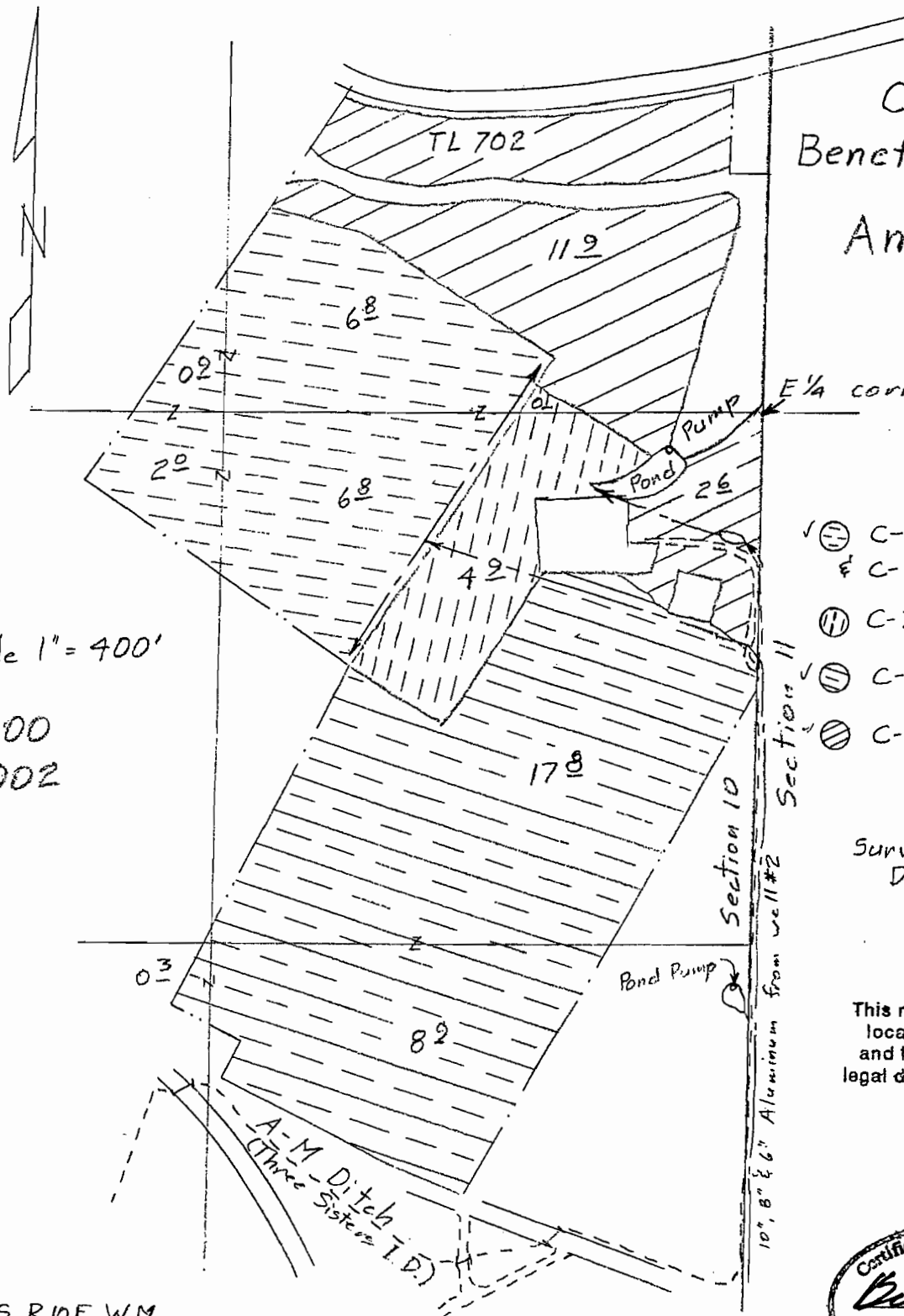
T.15S., R.10E., W.M.

RECEIVED

MAR 23 2007

WATER RESOURCES DIVISION  
SALEM, OREGON

Claim of  
Beneficial Use Map  
for  
Amestoy Ranch



E 1/4 corner of section 10

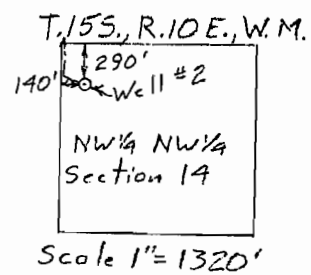
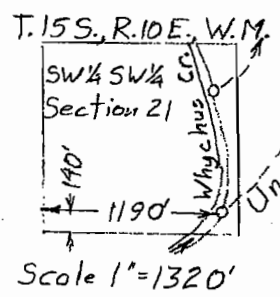
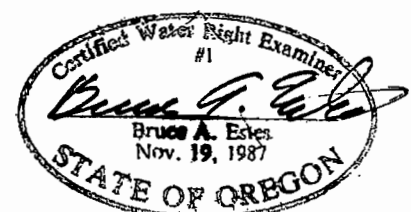
Scale 1" = 400'

T-8900  
T-8902

- ✓ ⊖ C-81454 1900 16 1/2 ac.  
    & C-57115 supp. 16 1/2 ac.
- ⊖ C-74135 1903 50 ac.
- ✓ ⊖ C-982 1908 270 ac.
- ⊖ C-2056 1912 145 ac.

Surveyed Aug 23 &  
Dec 29, 2006

This map is for the purpose of  
locating a water right only  
and has no intent to provide  
legal dimensions or the location  
of property lines.



**ESTES SURVEYS, LLC**  
 PO Box 17519      60382 Arnold Rd  
 Salem, OR 97306-7519      Bend, OR 97702  
 (503) 585-7593      (541) 382-7391

T. 15S, R. 10E, W.M.

Hwy 126

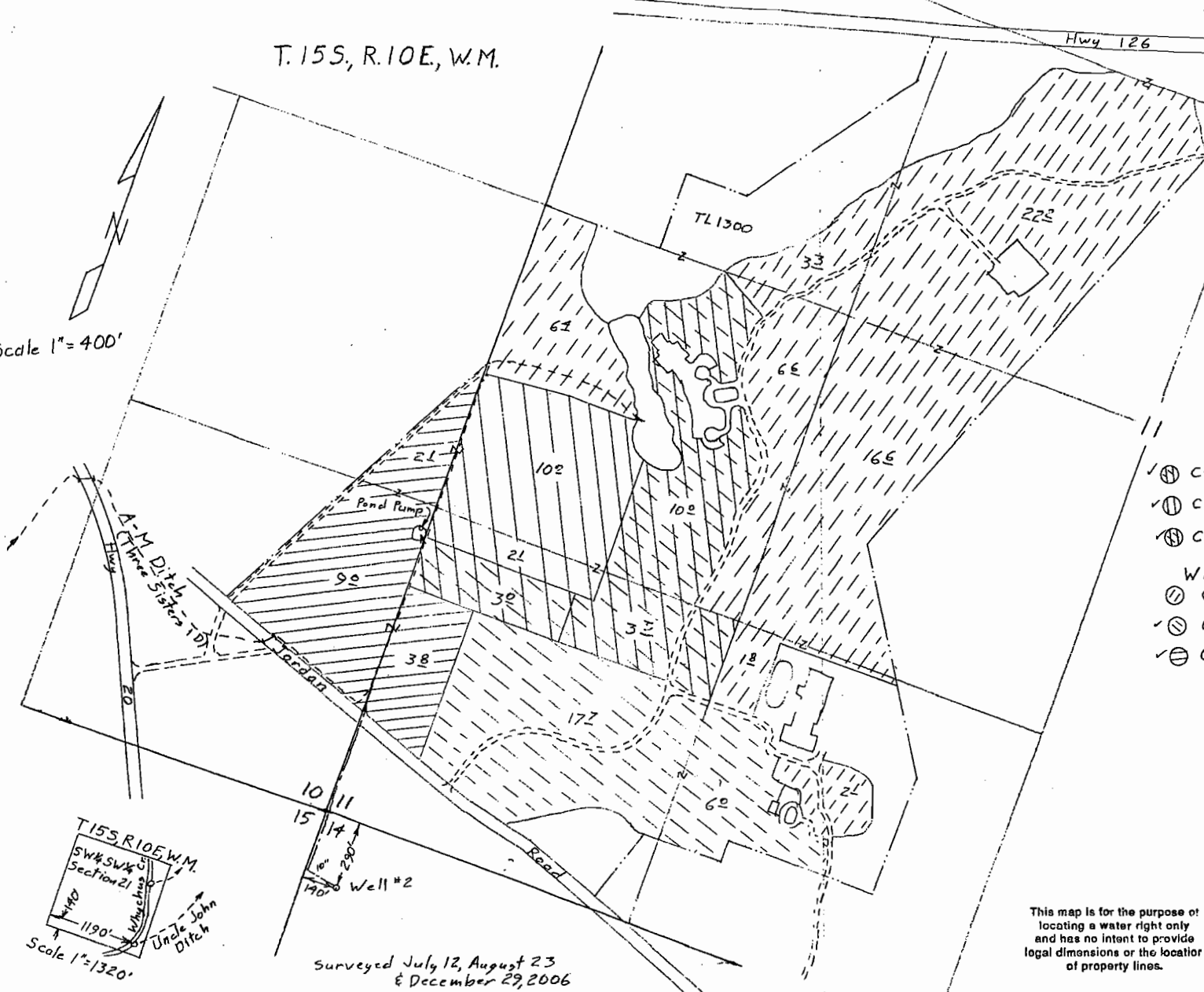
T-8900  
T-8902

RECEIVED

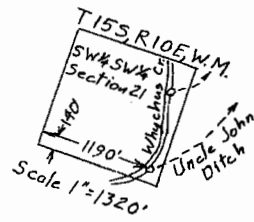
MAR 06 2007  
WATER RESOURCES DEPT  
SALEM, OREGON

Claim of Beneficial Use  
for  
R&B RANCH, LLC

Scale 1" = 400'



- Well #2
- ✓ ⊕ C-45033 Supplemental to 1908 13<sup>2</sup>
  - ✓ ⊕ C-57115 Primary 12<sup>1</sup>
  - ✓ ⊕ C-57156 Supplemental to 1908 3<sup>0</sup>
- Whychus Creek (Three Sisters I.D.)
- ✓ ⊕ C-74135 1903 59<sup>0</sup>
  - ✓ ⊕ C-982 1908 40<sup>0</sup>
  - ✓ ⊕ C-2056 1912 14<sup>2</sup>



Surveyed July 12, August 23  
& December 29, 2006



This map is for the purpose of locating a water right only and has no intent to provide legal dimensions or the location of property lines.

**ESTES SURVEYS, LLC**

PO Box 17519      80382 Arnold Rd  
Salem, OR 97306-7519      Bend, OR 97702  
(503) 585-7593      (541) 382-7391