

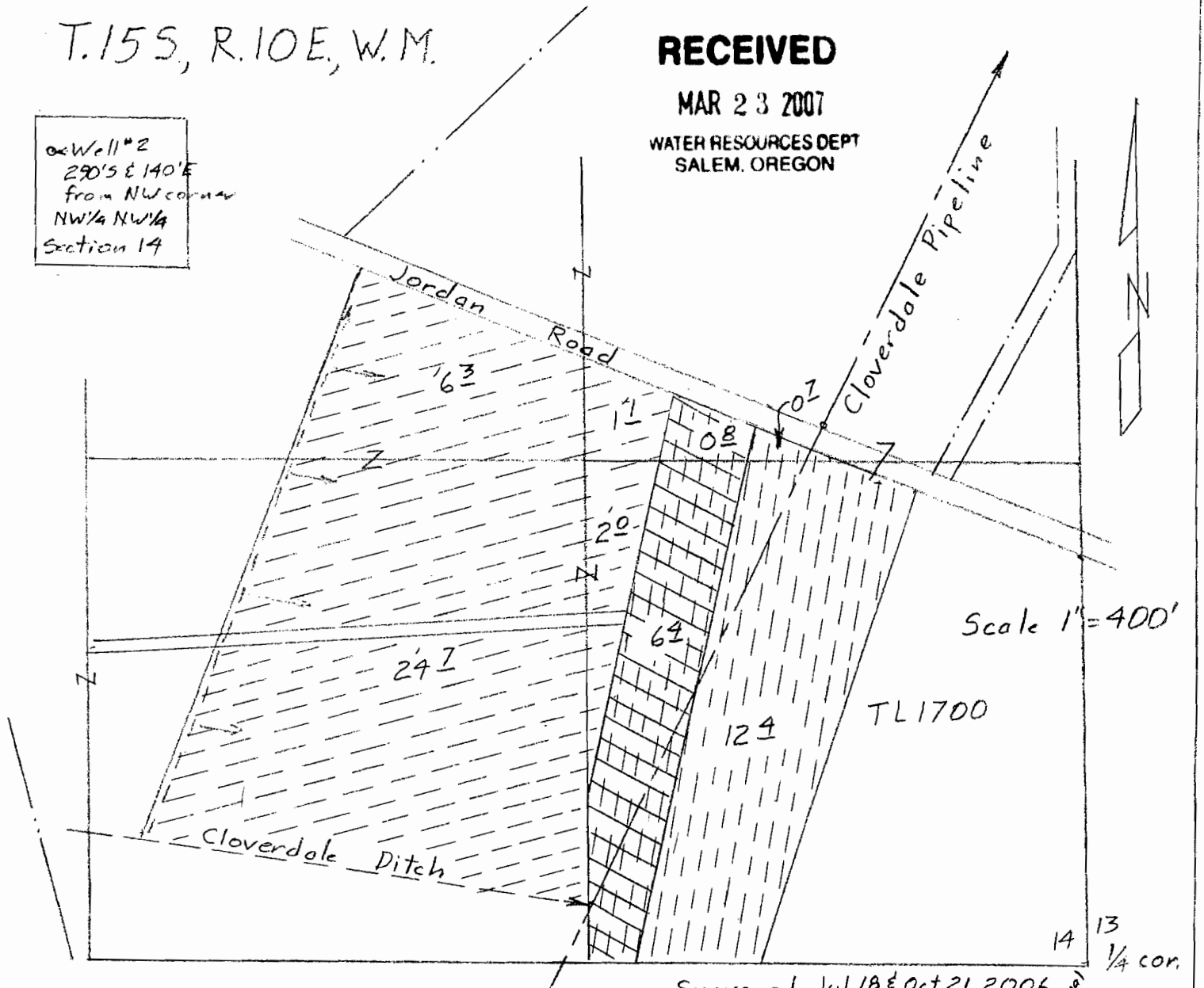
T.15S, R.10E, W.M.

RECEIVED

MAR 23 2007

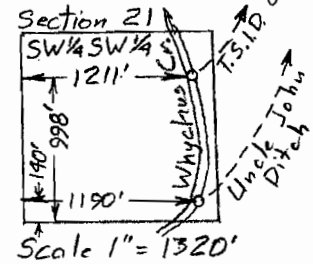
WATER RESOURCES DEPT  
SALEM, OREGON

Well #2  
290'S & 140'E  
from NW corner  
NW 1/4 NW 1/4  
Section 14

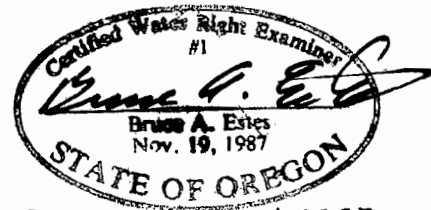


- ✓ ⊖ C-81454 1900 34<sup>1</sup>/<sub>2</sub> acres  
    & C-57115 1970 (well #2) 34<sup>1</sup>/<sub>2</sub> acres Supp
- ⊖ C-74135 1903 20<sup>3</sup>/<sub>4</sub> (not part of transfer)
- ✓ ⊖ C-57115 1970 (well #2)  
    7<sup>1</sup>/<sub>2</sub> acres supp to 1903

Surveyed Jul 18 & Oct 21, 2006



Claim of Beneficial Use Map  
for  
SKI POND RANCH, LLC



Renewal Dec 3, 2007

T-8900  
& T-8902

This map is for the purpose of  
locating a water right only  
and has no intent to provide  
legal dimensions or the locator  
of property lines.

ESTES SURVEYS, LLC

PO Box 17510 Salem, OR 97306-7519 (503) 585-7593	60382 Arnold Rd Bend, OR 97702 (541) 382-7391
--	---



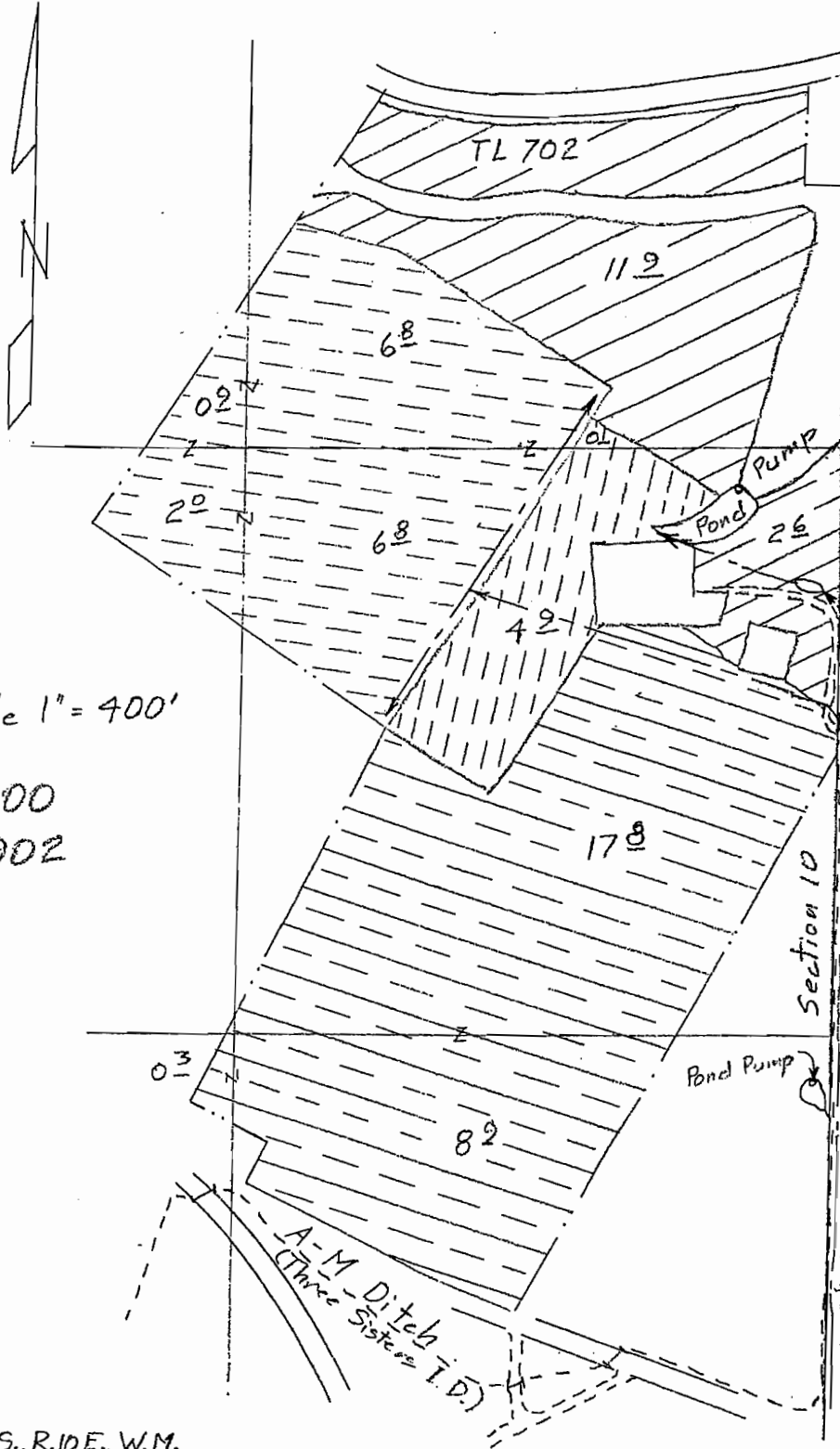
T.15S., R.10E., W.M.

RECEIVED

MAR 23 2007

WATER RESOURCES DIVISION  
SALEM, OREGON

Claim of  
Beneficial Use Map  
for  
Armestoy Ranch

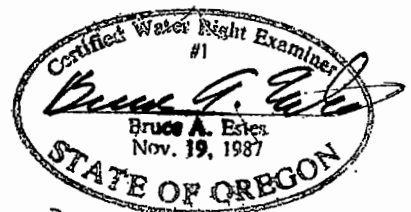


E 1/4 corner of section 10

- ⊖ C-81454 1900 16.5 ac.
- ⊖ C-57115 supp. 16.5 ac.
- ⊖ C-74135 1903 5.0 ac.
- ⊖ C-982 1908 27.0 ac.
- ⊖ C-2056 1912 14.5 ac.

Surveyed Aug 23 &  
Dec 29, 2006

This map is for the purpose of  
locating a water right only  
and has no intent to provide  
legal dimensions or the location  
of property lines.

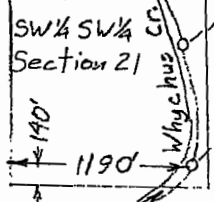


Renewal Dec. 31, 2007

**ESTES SURVEYS, LLC**

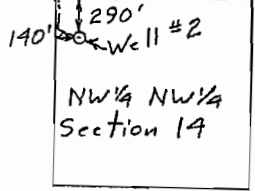
PO Box 17519 60382 Arnold Rd  
Salem, OR 97306-7519 Bend, OR 97702  
(503) 585-7593 (541) 382-7391

T.15S., R.10E., W.M.



Scale 1" = 1320'

T.15S., R.10E., W.M.



Scale 1" = 1320'