

FINAL PROOF SURVEY MAP

Located in the SW 1/4 SE 1/4, SE 1/4 SE 1/4 of Section 28,
NE 1/4 NW 1/4, NW 1/4 NE 1/4, NE 1/4 NE 1/4 of Section 33,
Township 28 South, Range 14 West, W.M.

RECEIVED

SEP 05 1996

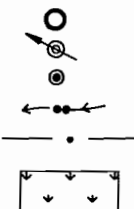
LAND RESOURCES DEPT
SALEM, OREGON

S 1/16

Prepared For: Alfred W. Faber
Prepared By: Dennis Goude
Surveyed: July 15, 1996

LEGEND

P.O.B.
P.O.D.
WELL P.O.D.
STREAM
PIPE
CRANBERRY
BOGS



NOTE:
P.O.D. IN FERRY CR. PERMIT 18280 CERTIFICATE 21431
P.O.D. WELL 1 & 2 G-11867

BOG ACREAGE BY 1/4 1/4
SEC. 33
NE 1/4 NE 1/4 7.9 acres
NW 1/4 NE 1/4 13.7 acres
NE 1/4 NW 1/4 3.0 acres
SEC. 28
SE 1/4 SE 1/4 8.0 acres
SW 1/4 SE 1/4 11.5 acres

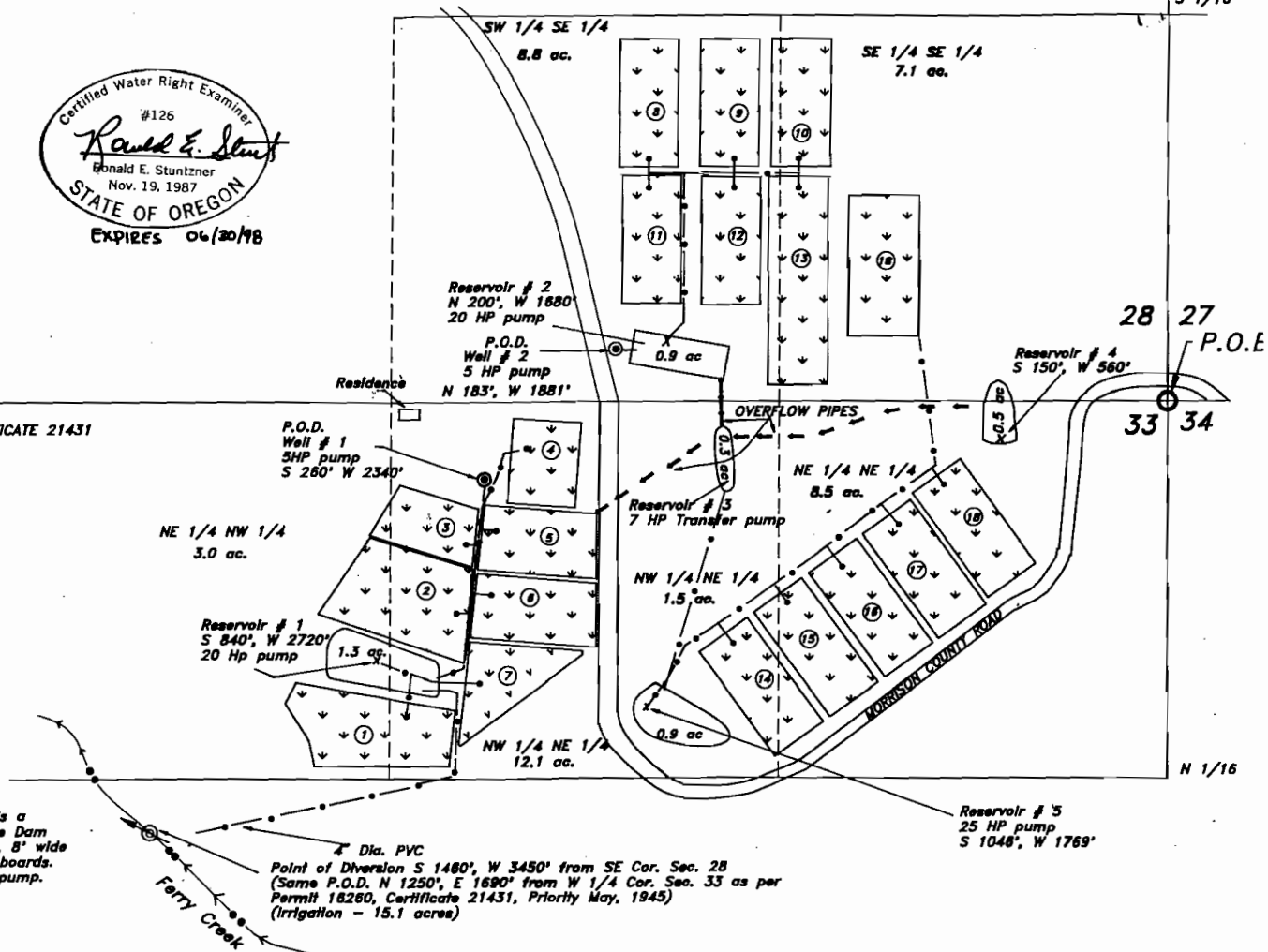
Stuntzner Engineering & Forestry

ENGINEERING • LAND SURVEYING • FORESTRY
PLANNING • WATER RIGHTS

705 South 4th St. Phone: (541) 267-2872
Post Office Box 118 Fax: (541) 267-0588
Coos Bay, Oregon 97420

Drawn By: DENNIS GOUDE	Date: AUG. 1, 1996
Checked By: TOM WILCZEK	Drawing No.: 96-171
Designed By:	Revised:
Job Name: FABER FARMS	Sheet 1 of 1

NOTE:
P.O.D. is a
Concrete Dam
8' high, 8' wide
w/flashboards.
20 HP pump.



N 1/16