

# CLAIM OF BENEFICIAL USE

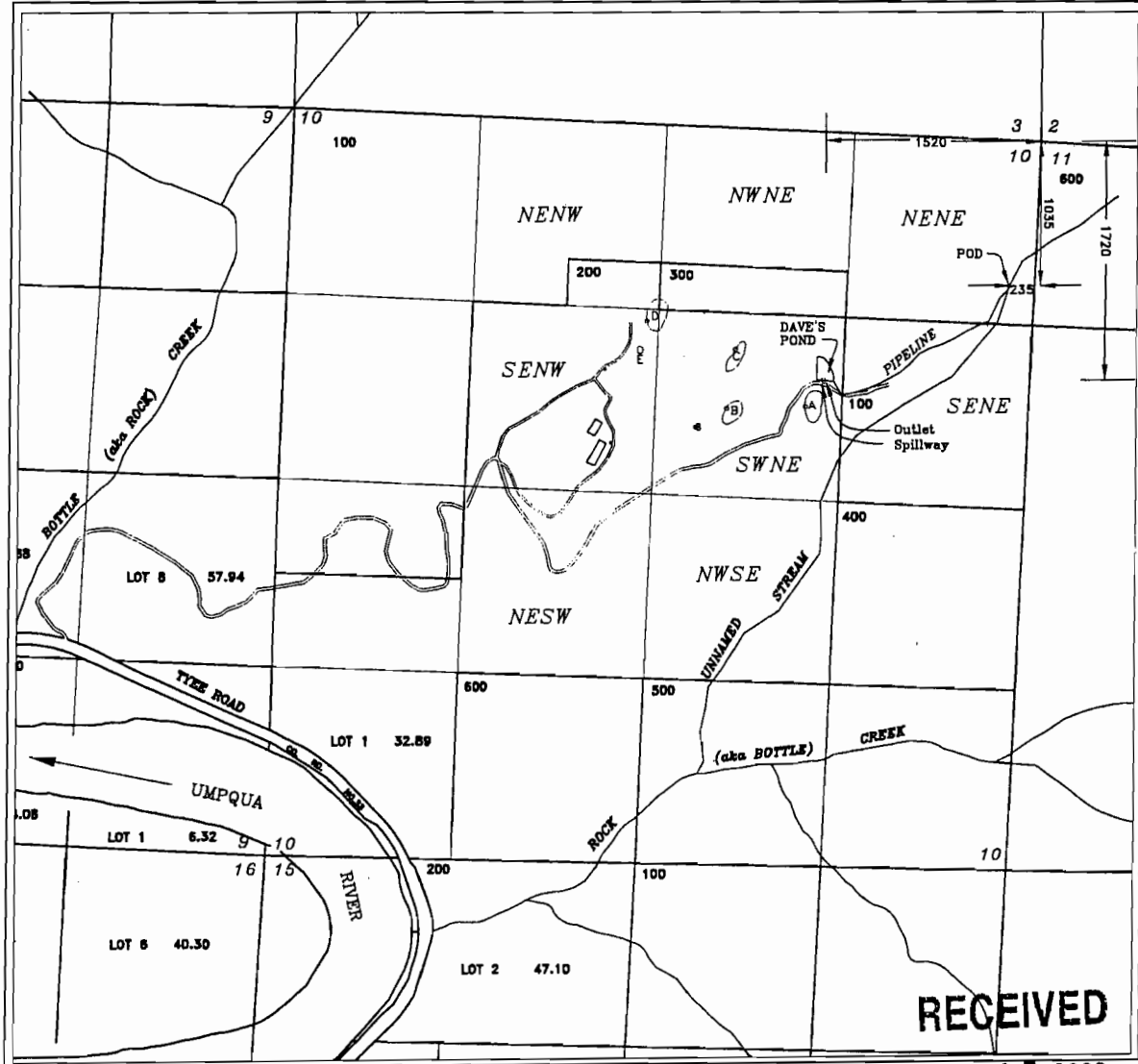
APPLICATION R-85702

PERMIT R-13788

DAVE'S POND

TOWNSHIP 25W, RANGE 7 WEST, W.M.

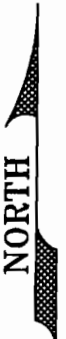
DOUGLAS COUNTY OREGON



KIRPAL LIGHT SATSANG, INC.  
 P.O. BOX 10  
 UMPQUA, OR 97486

MAY 27 2009

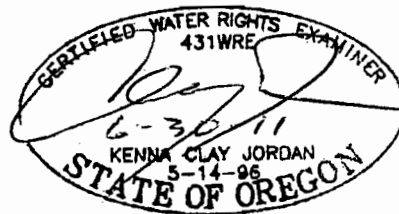
WATER RESOURCES DEPT  
 SALEM, OREGON



POD - 1035 FEET SOUTH & 215 FEET WEST  
 FROM THE NE CORNER SECTION 10

OUTLET - 1720 FEET SOUTH & 1520 FEET WEST  
 FROM THE NE CORNER SECTION 10

USE OF WATER - MULTIPURPOSE  
 AREA OF POND - 0.4 ACRES  
 VOLUME OF POND - 3 ACRE FEET



Scale  
 1 inch = 1320 feet

This map is not intended to provide legal dimensions  
 or locations of property ownership lines

Base Map: Douglas County GIS  
 2005 FSA Aerial Photos  
 USGS Quadrangle

JORDAN ENGINEERING  
 460 JORDAN LANE  
 ROSEBURG, OR 97471  
 (541) 673-1931

1/12/2009 n.e.d.