

RECEIVED

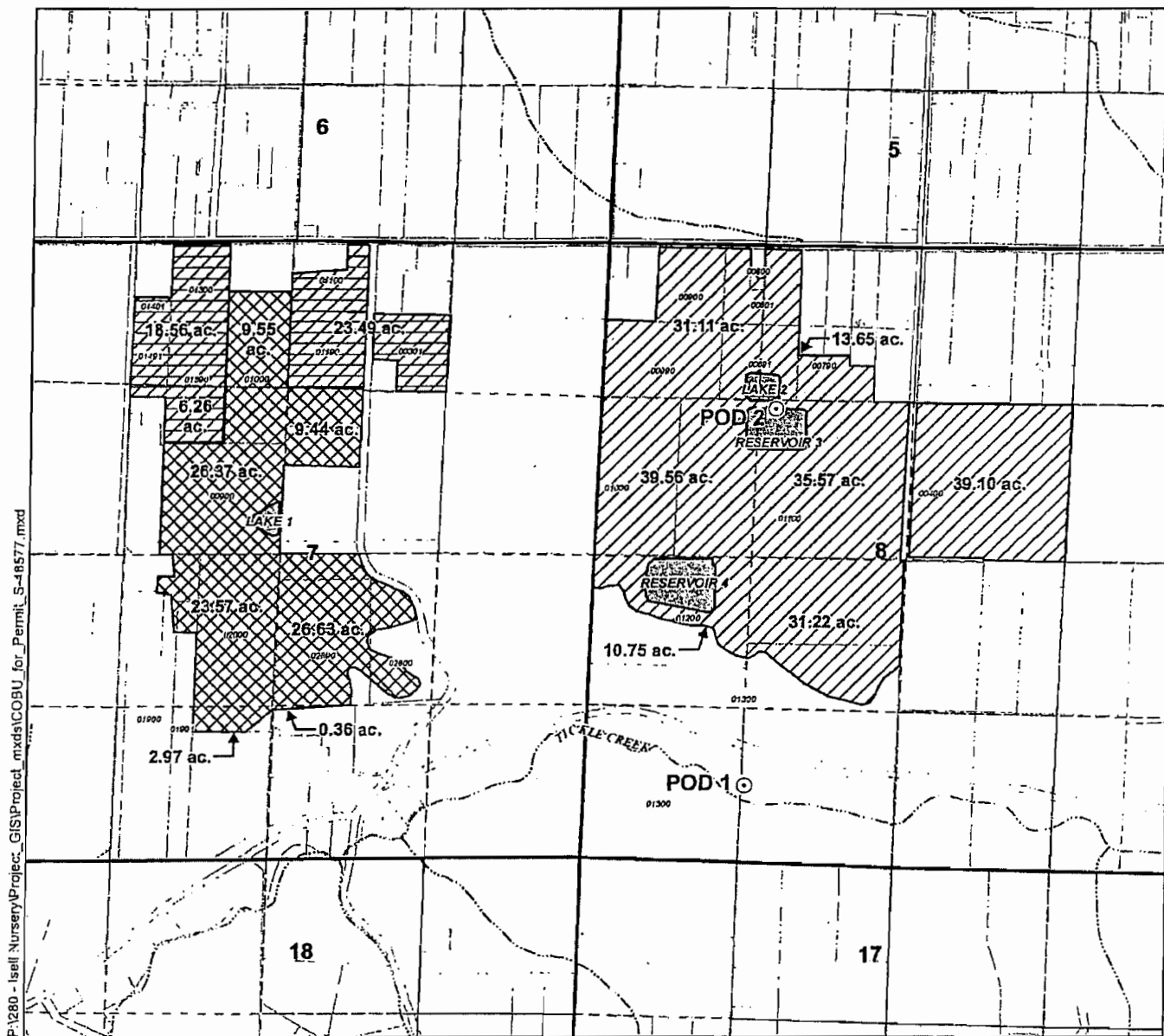
SEP 29 2008

### Claim of Beneficial Use Map

Permit S-48577 (Application S-68024)

Sections 7 & 8, Township 2 South, Range 4 East (W.M.)

WATER RESOURCES DEPT  
SALEM, OREGON



P:\1280 - Isell Nursery\Project\_mxd\COBU\_for\_Permit\_S-48577.mxd

#### Legend

##### Place of Use (POU)

Stored Water (Reservoir 3) for Containerized Nursery Stock

Live Flow (Tickle Creek) and Stored Water (Reservoir 3) for Containerized Nursery Stock

Live Flow (Tickle Creek) for Irrigation and Related Nursery Use

Point of Diversion (POD)

Tax Lots

Roads

Watercourses

Waterbodies

##### POD Location Descriptions

###### POD 1

Located 645 feet North and 1,345 feet East from the SW corner of Section 8, Township 2 South, Range 4 East (W.M.)

###### POD 2

Located 1,255 feet North and 1,160 feet West from the Center corner of Section 8, Township 2 South, Range 4 East (W.M.)

##### Map Information

Projection: Oregon State Plane North Zone

Datum: North American Datum of 1983

Date: August 11, 2008

Prepared By: GSI Water Solutions, Inc.

##### Data Sources

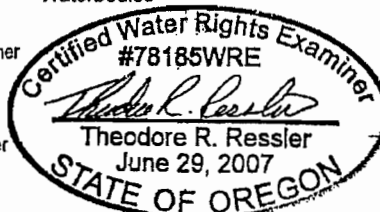
Cackamas County GIS, Oregon Geospatial Data Clearinghouse

##### Disclaimer

This map was prepared for the purpose of identifying the location of a water right only and it is not intended to provide legal dimensions or location of property ownership lines.

##### Scale

0 660 1,320  
1 inch equals 1,320 feet



EVIDENCE 17 21 2008