

207 1002

RECEIVED

JUN 10 2009





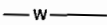
WATER RESOURCES DEPT
SALEM, OREGON



SCALE

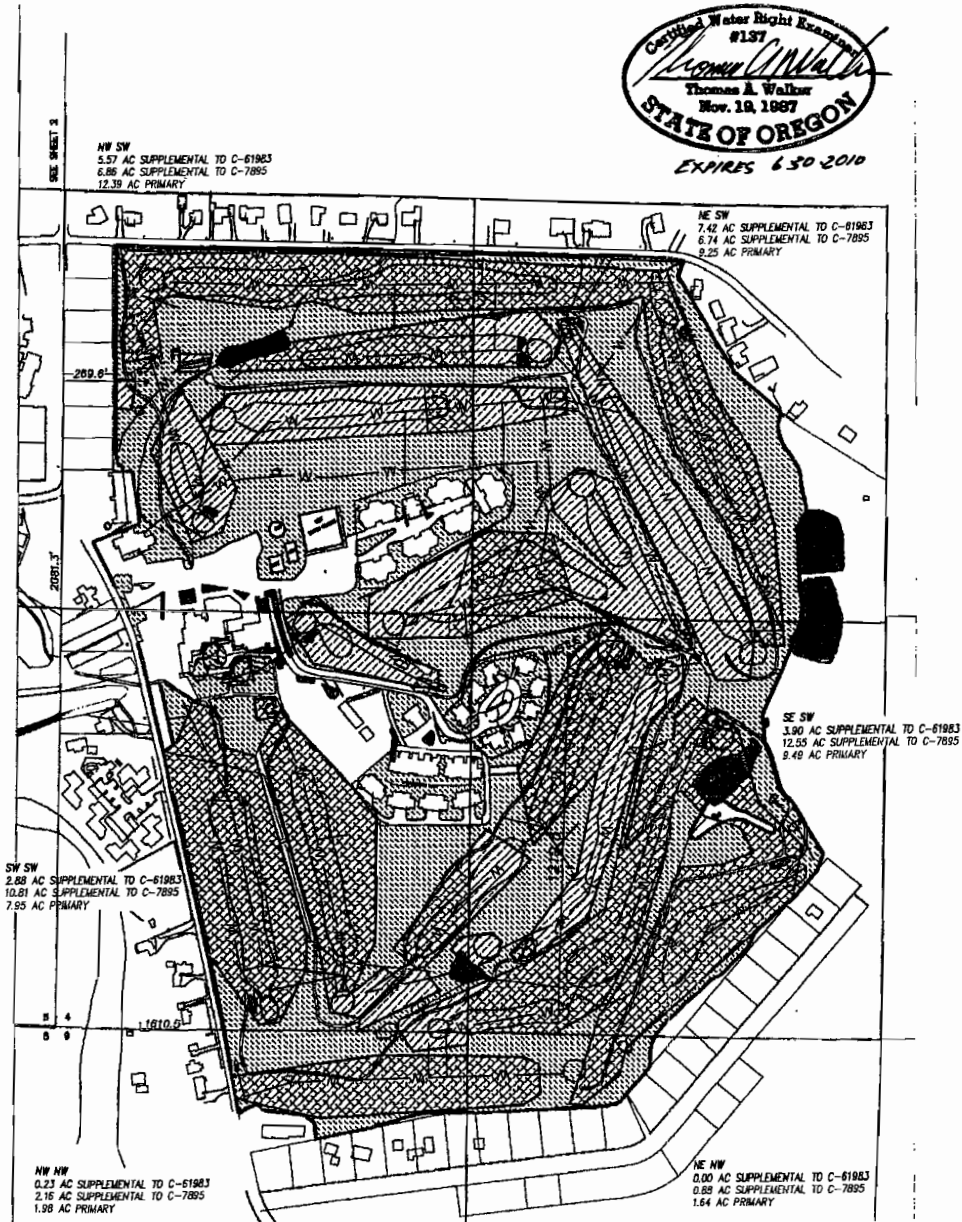


(FEET)
1 inch = 400 ft.

-  SUPPLEMENTAL WATER RIGHTS (C-61983) NOTE: THESE SUPPLEMENTAL RIGHTS DIRECTLY OVERLAY PRIMARY RIGHTS FROM C-61983
-  SUPPLEMENTAL WATER RIGHTS (C-7895) NOTE: THESE SUPPLEMENTAL RIGHTS DIRECTLY OVERLAY PRIMARY RIGHTS FROM C-7895
-  NEW PRIMARY WATER RIGHTS (PERMIT G-11283)
-  PONDS
-  APPROXIMATE LOCATION OF WATER MAINS

GROUNDWATER APPROPRIATION CLAIM OF BENEFICIAL USE
FOR EDWIN A. HOPPER
PERMIT NO. G-11283 APPLICATION NO G-11924
LOCATED IN T 3 S, R 7 E, WM

NOTE: THIS MAP IS FOR THE PURPOSE OF LOCATING A
WATER RIGHT ONLY AND HAS NO INTENT TO PROVIDE
THE LOCATION OF PROPERTY LINES OR LEGAL DIMENSIONS



WHPacific
PROF. ENG. LICENSE NO. 1987
1000 SW 2nd Ave., Suite 300
Portland, OR 97204
503-525-5456 Fax: 503-525-5775
www.whpacific.com

REVISIONS	
NO.	DATE

SHEET INFO	
DESIGNED	DRAWN
CHECKED	APPROVED
DATE	DATE

PROJECT NUMBER: DRAWING FILE NAME: SCALE: 1"=400'
SHEET NUMBER: 1 OF 1
APPLICATION G-11924, PERMIT G-11283
REVISED CLAIM OF BENEFICIAL USE MAP
OLY-IDA RATH LLC
THE RESORT AT THE MOUNTAIN

WR1.0

COBU MAP #0435

FILE: \\C:\DATA\PROJECTS\2009\0435\COBU\COBU-0435-C-11924-11171-060209-112327.dwg
User: harschard\jph Designer: 6020 AMB B (Cassidy) Date: 11/17/09