

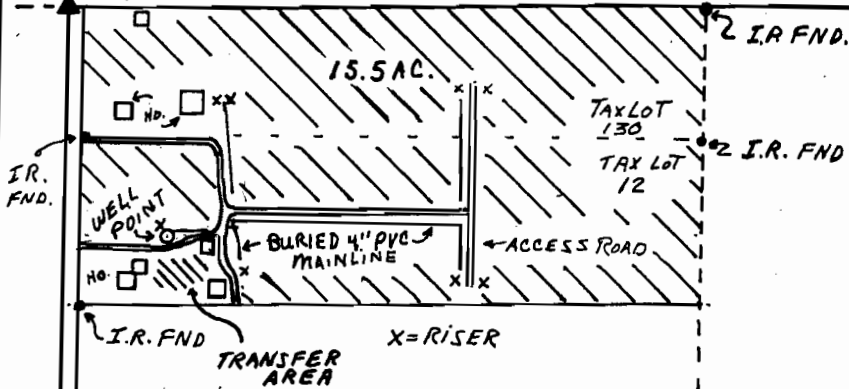
T.1S., R.4E., W.M.
SECTION 19

AUG 1 4 1997

WATER RESOURCES DEPT.
SALEM, OREGON

1/4 CORNER

CENTER SECTION



THE WELL POINT IS 476 FEET SOUTH
AND 213 FEET EAST OF THE WEST
1/4 CORNER OF SECTION 19.

S.E. 28 E N 3

JOHNSON CREEK

STONE RD.

24

19

1/4 CORNER

25 30 SCALE 1"=400' BASIS OF BEARING P.S. 52942

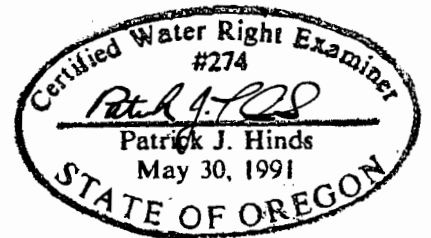
FINAL PROOF SURVEY

UNDER

APPLICATION # G-13088 PERMIT # G-12269

IN THE NAME OF

EKSTROM NURSERY



SURVEYED AUGUST 6, 1997