

CLAIM OF BENEFICIAL USE MAP FOR:

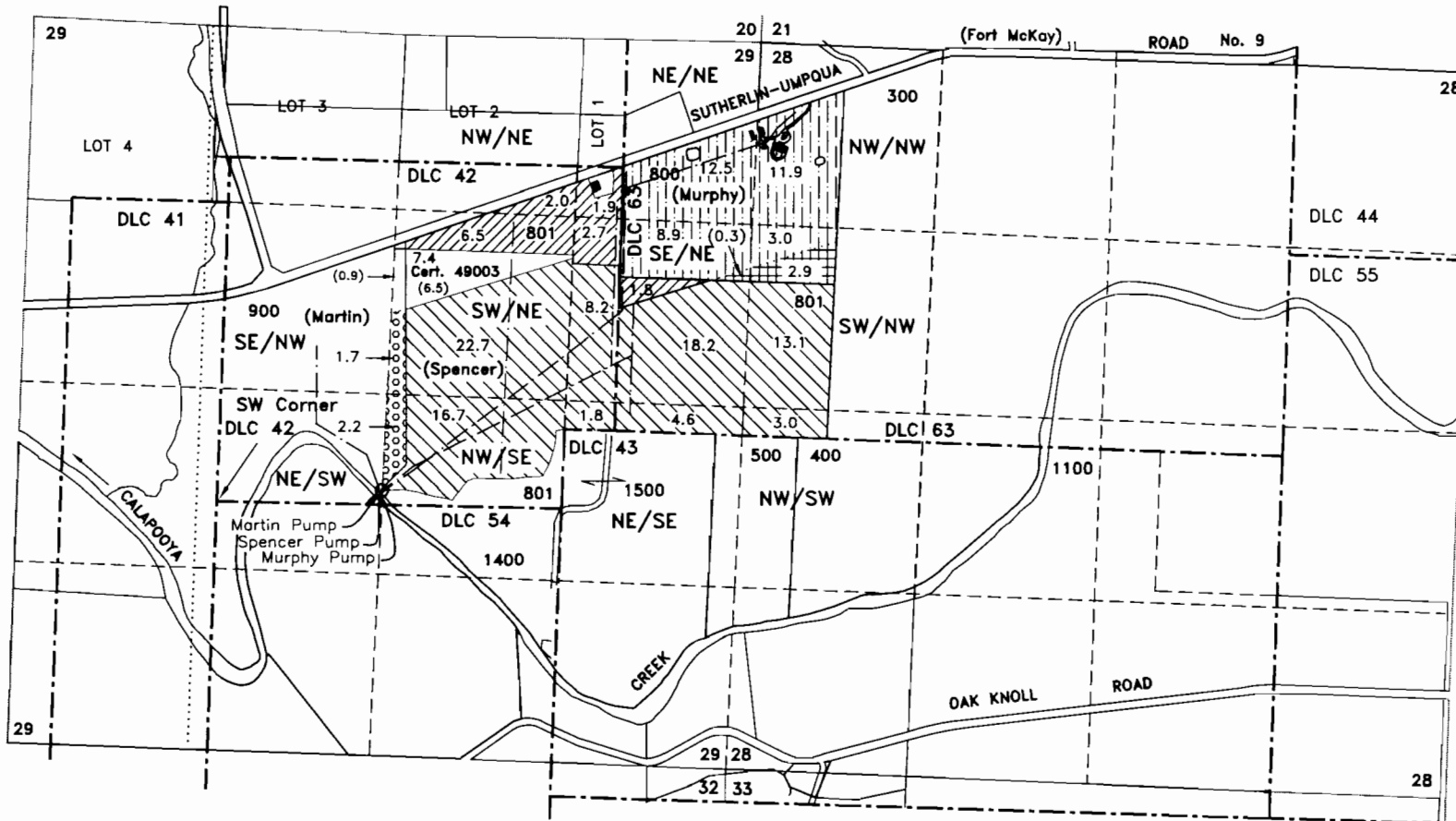
TRANSFER 4360

AND

PERMIT 45243 (APPLICATION 59687)

TAX LOT 801, SECTIONS 28 & 29, TOWNSHIP 25 SOUTH RANGE 6 WEST, W.M.

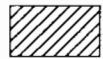
DOUGLAS COUNTY, OREGON

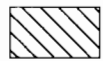



Scale
1 inch = 1320 feet


Point of Diversion (3-Portable Pumps) - NW/SE, section 29, 110 feet north and 1220 feet east from the southwest corner of Wm. C. Burk DLC 42


--- Buried mainline

 Transfer 4360 Spencer - 14.9 acres
Priority - December 15, 1952

 Permit 45243 Spencer - 88.3 acres
Priority - January 3, 1980

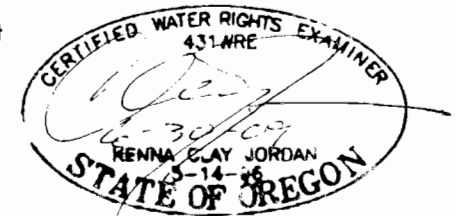
 Transfer 4360 Murphy - 36.3 acres
Priority - December 15, 1952

 Permit 45243 Murphy - 3.2 acres
Priority - January 3, 1980

 Permit 45243 Martin - 3.9 acres
Priority - January 3, 1980

This map is not intended to provide legal dimensions or locations of property ownership lines.

Base map from Douglas County GIS database over 2004 aerial photo



JORDAN ENGINEERING
460 JORDAN LANE
ROSEBURG, OR 97471
(541) 673-1931

Revised 2/6/2009 n.e.d.