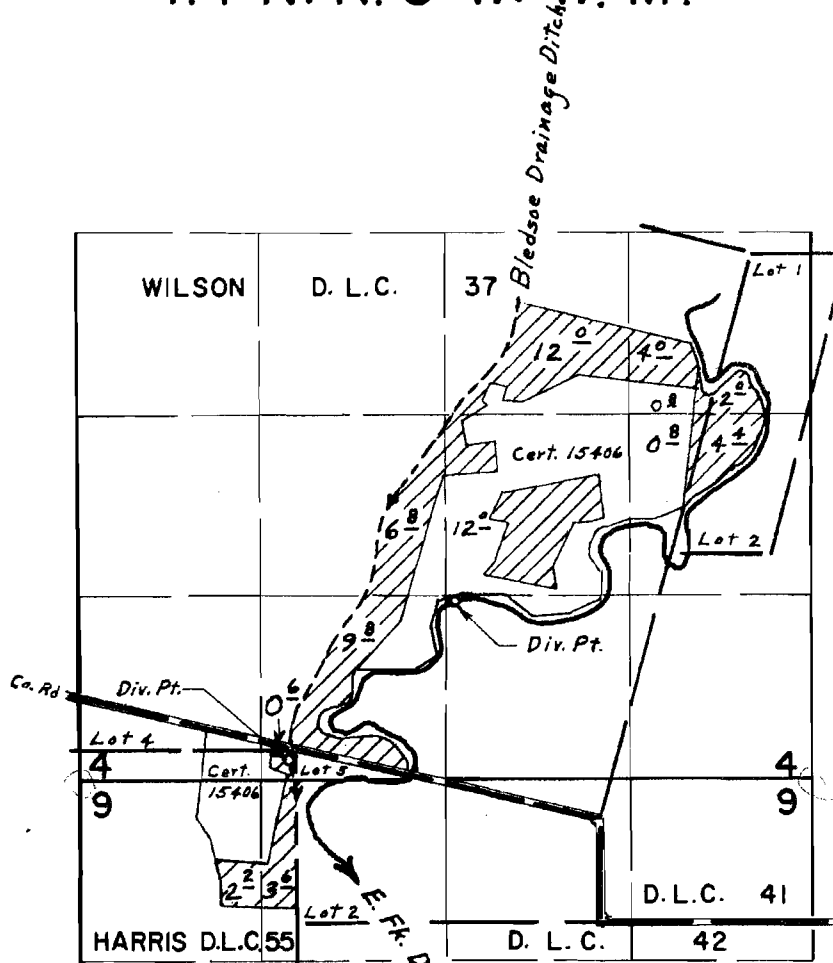


T. 1 N. R. 3 W. W. M.



Div. Pts. located: E. Fr. Dairy Cr., 1060' N. & 1150' E.;
 Bledsoe Ditch, 70' S. & 40' W. both from N.E. Cor. Harris' D.L.C. 55

RECEIVED

FEB 08 2008

WATER RESOURCES DEPT
 SALEM, OREGON

FINAL PROOF SURVEY UNDER

Application No. 49948 Permit No. 37567
44823 33538
 IN NAME OF

JOSEPH DUYCK

Surveyed May 26, 1971 by L. E. Gould
Aug. 7, 1975, by R. Mucken