

THIS MAP IS PREPARED FOR WATER RIGHT PURPOSES ONLY,
AND SHOULD NOT BE USED FOR PROPERTY LOCATION PURPOSES.

RECEIVED

OCT - 7 1997

WATER RESOURCES DEPT.
SALEM, OREGON



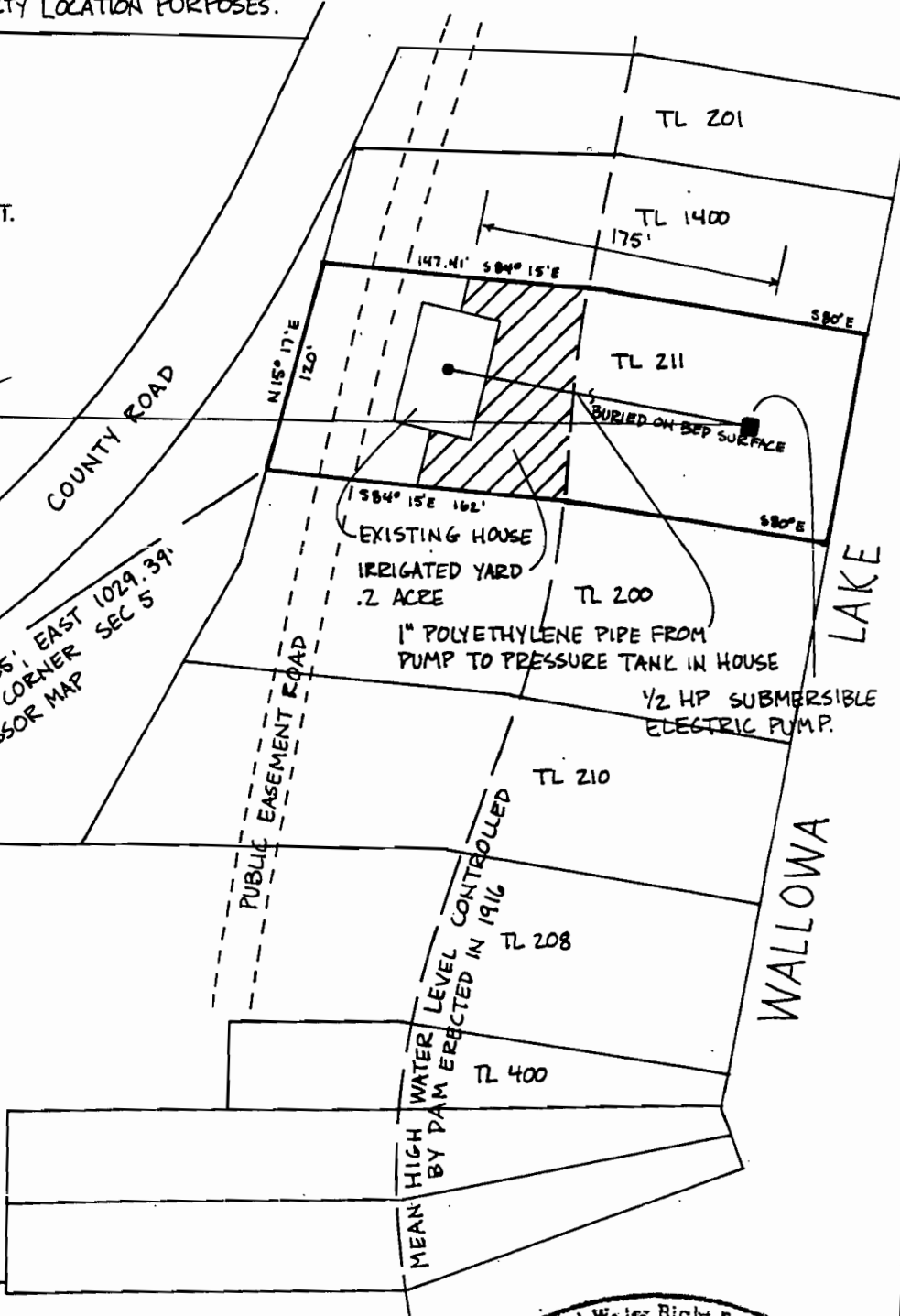
1" = 100'

SW 1/4 NW 1/4
SEC. 5
T 35, R 45E, WM

305' N

WEST 1/4 COR.
SECTION 5
T 35, R 45E, WM.

NORTH 694.35', EAST 1029.39'
FROM W 1/4 CORNER SEC 5
PER ASSESSOR MAP



HIGH WATER LEVEL CONTROLLED
BY DAM ERRECTED IN 1916
MEAN

EXISTING HOUSE
IRRIGATED YARD
.2 ACRE
1" POLYETHYLENE PIPE FROM
PUMP TO PRESSURE TANK IN HOUSE
1/2 HP SUBMERSIBLE
ELECTRIC PUMP.

LOT LOCATION AND DIMENSIONS ARE BASED ON
WALLOWA COUNTY ASSESSOR MAP # 3S 45 5B

PROPOSED DIVERSION IS ON THE NE CORNER OF
WALLOWA LAKE, ON THE WALLOWA RIVER, A
TRIBUTARY OF THE GRANDE RONDE RIVER.

POINTS OF DIVERSION AND USE ARE IN THE SW 1/4, NW 1/4, SEC 5, T35, R45E WM
AMENDED BY WRD staff, 9-18-09 *TRD*



**DOMESTIC WATER RIGHT
FINAL PROOF MAP**

IN SECTION 5, T3S, R45E, WM WALLOWA COUNTY
FOR: MYRON AND BETHEL REED

DATE	10/97
JOB	91401
DESIGN	RWS
DRAWN	TCB

WALLOWA MOUNTAIN
ENGINEERING
PO BOX 266
ENTERPRISE, OREGON 97828
926-4085

REVISIONS	
SHEET	1 of 1