

RECEIVED

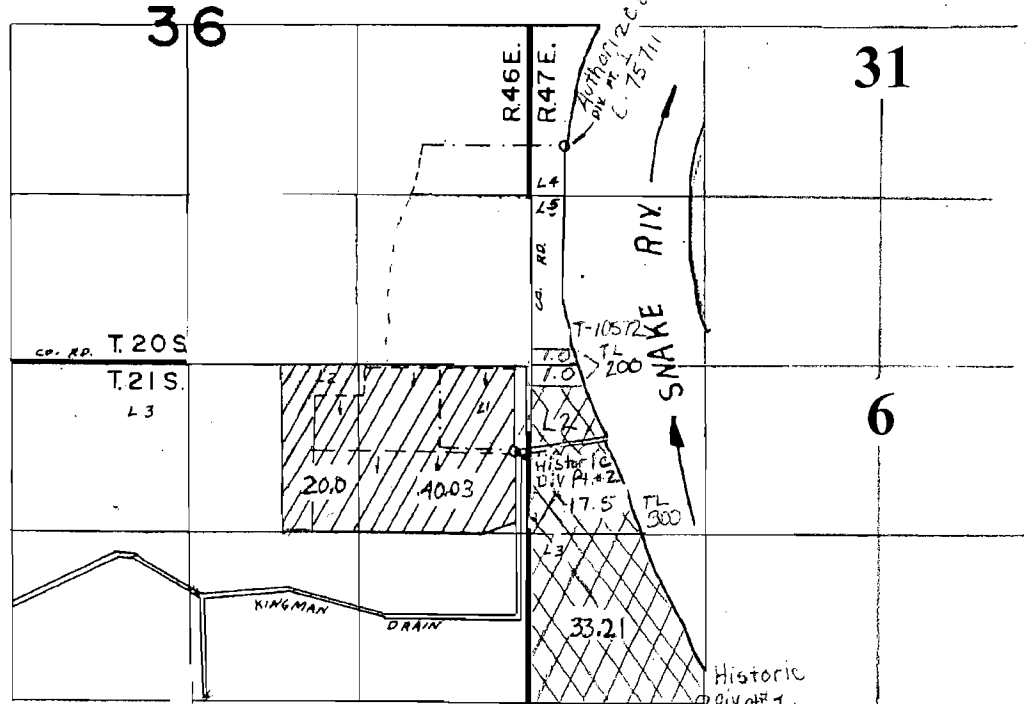
JUL 24 2009

WATER RESOURCE DEPT.
EASTERN REGION

T. 20 & 21 S. R. 46E. & 47 E. W.M.



SC



Amended 7/13/2009

Transfer No. : T-10717
HISTORIC POINT OF DIVERSION CHANGE
in the name of STEPHEN CONANT

Certificate 75711

Authorized POD#1: NW $\frac{1}{4}$ SW $\frac{1}{4}$, Section 31, T 20S R. 47E, W.M.



Historic POD #1: 2630' S & 1210' E, From the NW Cor., Sec 6 (L-3)



Historic POD #2: 680' S & 100' W, From the NE Cor., Sec 1 (L-1)