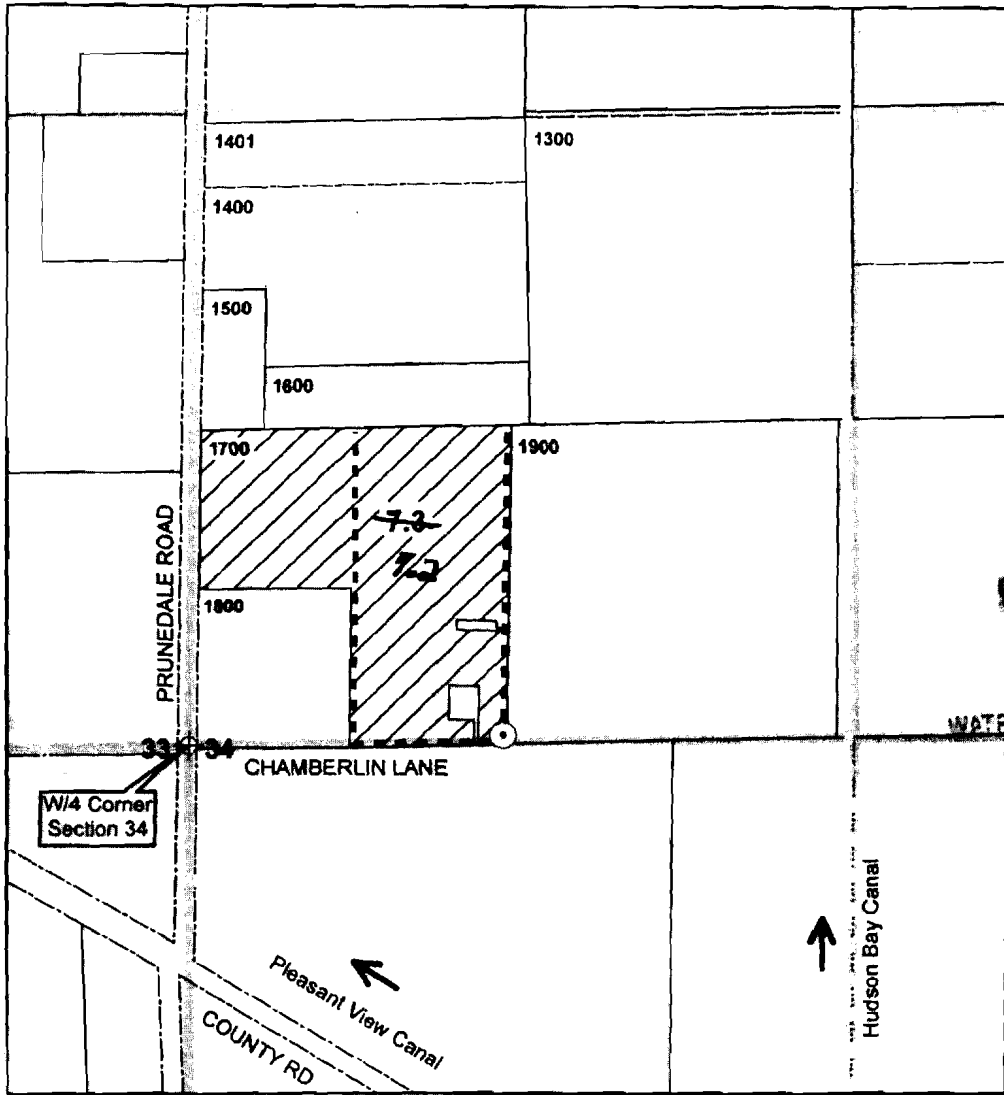


SW/4 of NW/4 of S34, T6N, R35E, WM
UMATILLA COUNTY



RECEIVED

OCT 05 2009

WATER RESOURCES DEPT
SALEM, OREGON

⊙ **Authorized POA**

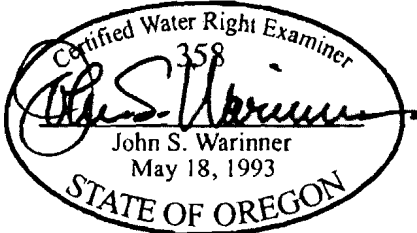
Well is located in the SW/4 of NW/4, Section 34, T6N, R35E, WM, at a distance 25 feet N and 640 feet E from W/4 Corner of Section 34. Well Log UMAT 5025. No flowmeter present nor required.

----- **Conveyance**

Water conveyed throughout place of use with portable aluminum mainline (3-inch diameter). Water applied with Nelson Rotator (WindFighter) sprinklers mounted on aluminum handlines.

 **Authorized POU**

Water beneficially used for supplemental irrigation of ^{7.2}~~7.2~~ acres in SW/4 of NW/4, Section 34, T6N, R35E, WM. WRD staff modified the number of supplemental irrigation acres shown on the map. 12/4/2009 BR



The purpose of this map is to identify the location of a water right. It is not intended to provide information regarding the location of property ownership boundary lines.

FOUNTAINHEAD
1204 Alvarado Terrace
Walla Walla, WA 99362
509.529.2646 phone

CLAIM OF BENEFICIAL USE MAP

App G-14842 and Permit G-13683

in the name of
CAYUSE VINEYARDS, LLC

Revised 17 SEP 2009