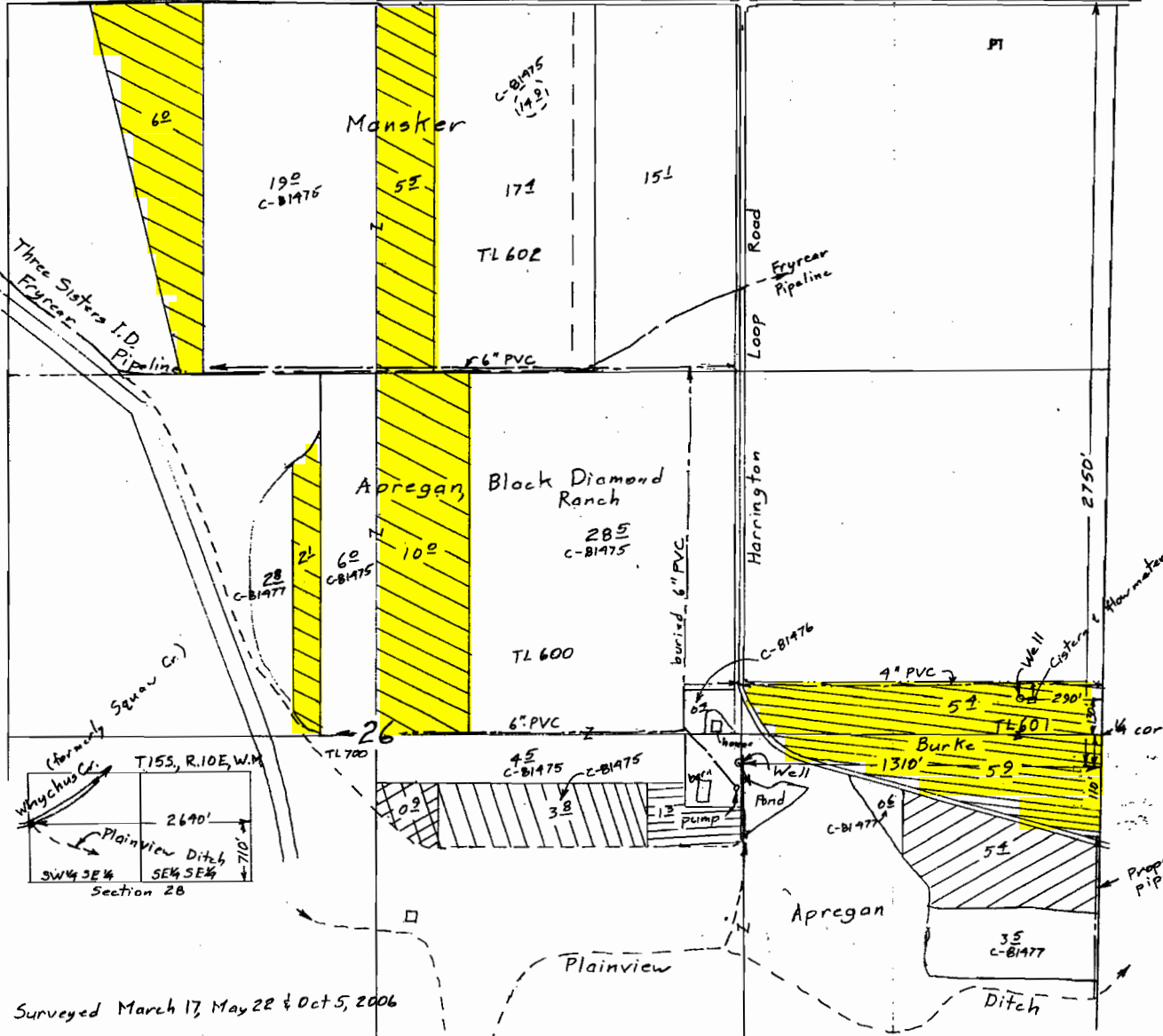


TOWNSHIP 15 SOUTH, RANGE 10 EAST, W.M.



Claim of Beneficial Use Map  
for  
Craig Apregan, Mike Mansker  
and Doug & Barbara Burke

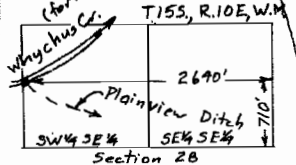
**RECEIVED**  
MAR 06 2007  
WATER RESOURCES DEPT  
SALEM, OREGON

Scale 1" = 400'

T- 9571

- Trsf Order
- ⊙ #10 (Burke) 112 acres supp to 1904
  - ⊙ #11 (Mansker) 11± acres supp to 1895  
(Apregan) 10± acres supp to 1885  
2± acres supp to 1895
  - ⊙ #14 (Apregan) 13 acres primary
  - ⊙ #17 (Apregan) 6± acres supp to 1904
  - ⊙ #19 (Apregan) 47 acres 1904 primary

**COMMP # 0260**



Surveyed March 17, May 22 & Oct 5, 2006

This map is for the purpose of locating a water right only and has no intent to provide legal dimensions or the location of property lines.

**ESTES SURVEYS, LLC**  
 PO Box 17518      60382 Arnold Rd  
 Salem, OR 97306-7518      Bend, OR 97702  
 (503) 586-7383      (541) 382-7391