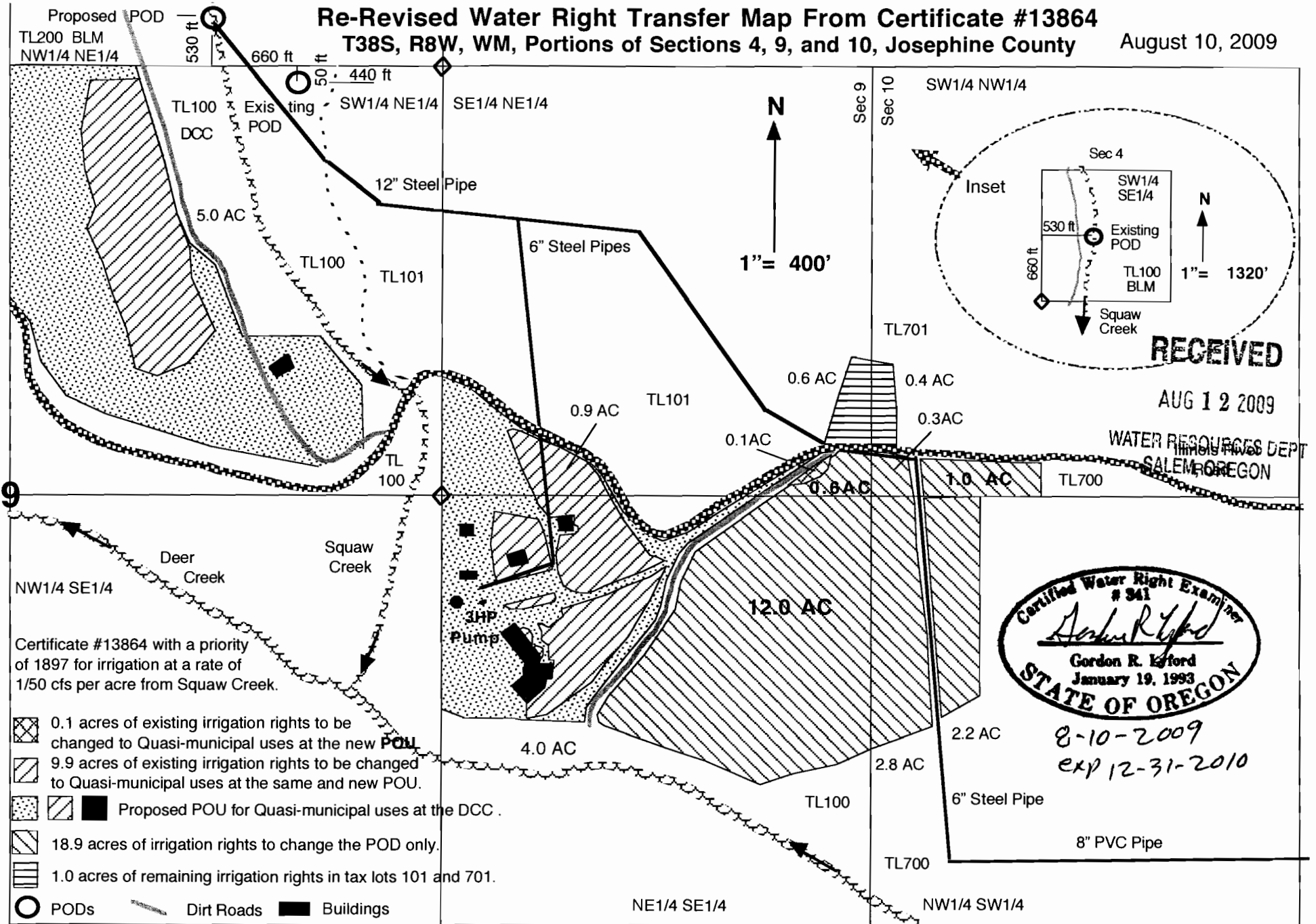


Re-Revised Water Right Transfer Map From Certificate #13864 T38S, R8W, WM, Portions of Sections 4, 9, and 10, Josephine County

August 10, 2009



Certificate #13864 with a priority of 1897 for irrigation at a rate of 1/50 cfs per acre from Squaw Creek.

- 0.1 acres of existing irrigation rights to be changed to Quasi-municipal uses at the new POU.
- 9.9 acres of existing irrigation rights to be changed to Quasi-municipal uses at the same and new POU.
- Proposed POU for Quasi-municipal uses at the DCC.
- 18.9 acres of irrigation rights to change the POD only.
- 1.0 acres of remaining irrigation rights in tax lots 101 and 701.
- PODs
- Dirt Roads
- Buildings

This map was drawn by Gordon R. Lyford for the Deer Creek Center to support their Water Right Transfer Application to change the POU, POD, and Character of Use of irrigation water from Squaw Creek under Certificate #13864. The DCC owns tax lots 100 and 700.

This map was prepared for the purpose of identifying the location of water rights only and is not intended to provide legal dimensions or the location of property ownership lines.

aka East Fork Squaw Creek
 (by Certificate #14622)
 West Fork Squaw Creek
 (by USGS 1996)

East Fork Squaw Creek
 (by USGS 1996)

Revised Water Right Transfer Map From Certificate # 14622

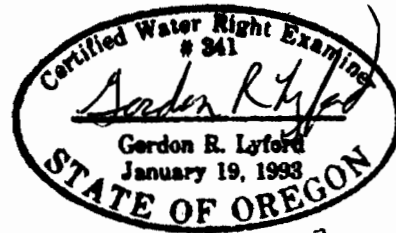
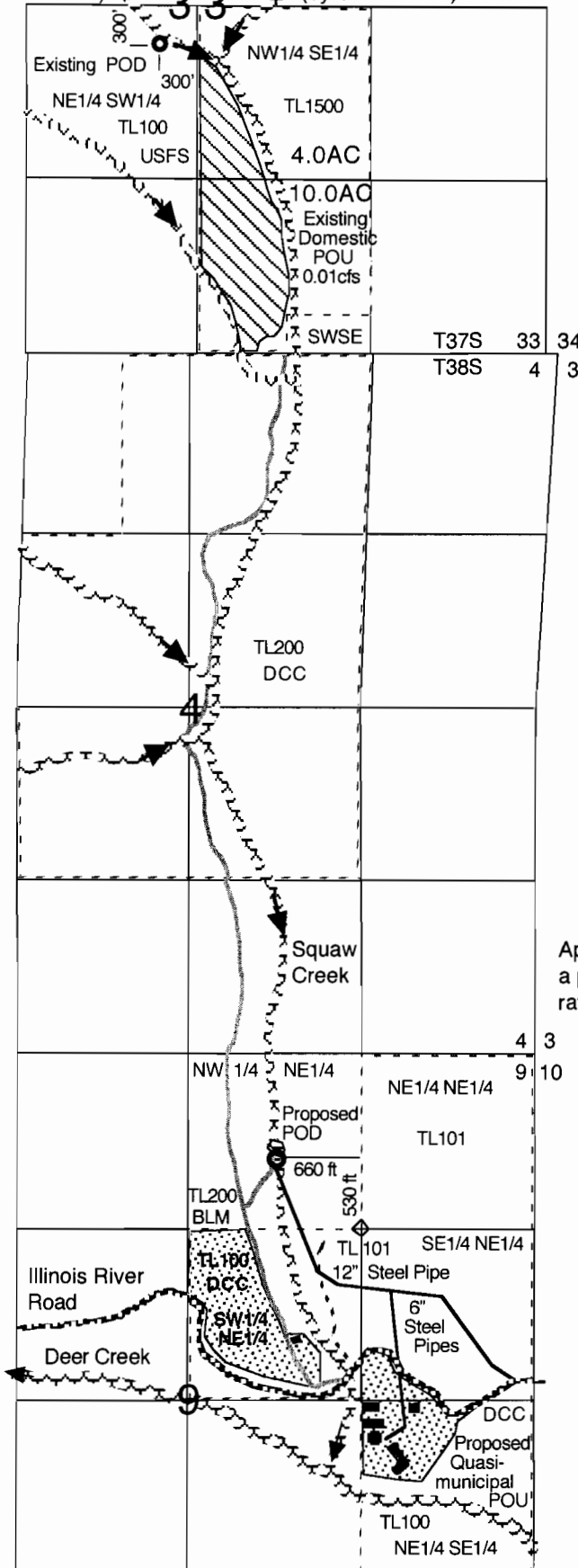
T37S, R8W, WM, Josephine County
 Portions of Section 33

T38S, R8W, WM, Josephine County
 Portions of Sections 4 and 9

June 6, 2009








N

1" = 1320'



6-6-2009
 exp 12-31-2010

Application S-17351, Permit S-13060, and Certificate #14622 with a priority of June 6, 1938 for irrigation and domestic uses at the rate of 1/50 cfs per acre and 0.01 cfs from East Fork Squaw Creek.

-   Proposed POU for Quasi-municipal uses at the DCC by transferring from C #14622.
-  14.0 acres of abandoned irrigation rights under C #14622 to cancel.
-  Streams
-  Points of Diversion (POD)
-  Dirt roads
-  Buildings

RECEIVED

JUN 25 2009

WATER RESOURCES DEPT
 S-LEM, OREGON

This map was drawn by Gordon R. Lyford for the Deer Creek Center to support their Water Right Transfer Application to change the Character of Use, POD, and POU of domestic water from the East Fork of Squaw Creek. The DCC owns tax lots 100, 200, and 1500.

This map was prepared for the purpose of identifying the location of water rights only and is not intended to provide legal dimensions or the location of property ownership lines.