

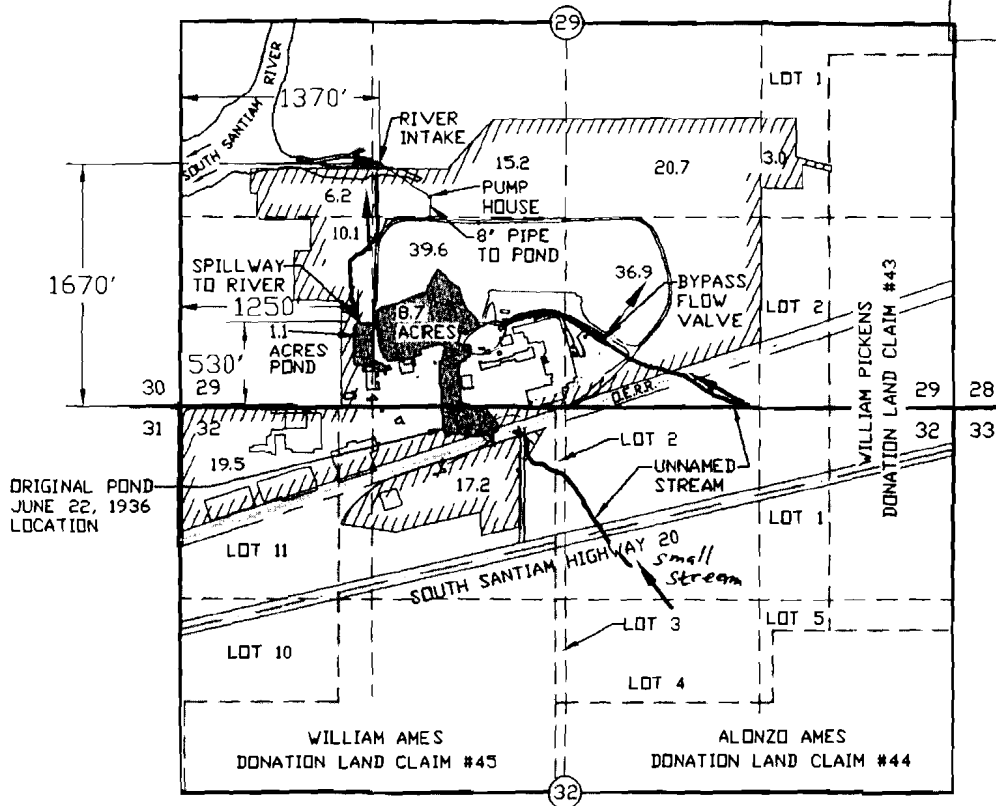
# FINAL PROOF SURVEY UNDER TRANSFER 7999 & 8000

PERMIT NO. R-5488, CERTIFICATE NO. 41352 & PERMIT NO. ~~12007~~ 12207, CERTIFICATE NO. 11926

IN THE NAME OF WILLAMETTE INDUSTRIES, INC.  
LOCATED IN

SECTIONS 29 & 32  
T.13 S., R.1 E., W.M.  
LINN COUNTY, OREGON  
SCALE: 1"=1320'-0"

**RECEIVED**  
SEP 29 2000  
WATER RESOURCES DEPT  
SALEM, OR

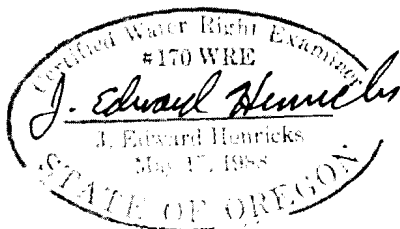


## LEGEND:

- = SECTION LINES
- - - - - = FORTY LINES
- - - - - = DONATION LAND CLAIM LINES
- /////// = BOUNDARY OF ACREAGE/OWNERSHIP

## ACREAGE SUMMARY

SECTION 29	NW 1/4, SW 1/4	6.2 ACRES
	SW 1/4, SW 1/4	10.1 ACRES
	NE 1/4, SW 1/4	15.2 ACRES
	SE 1/4, SW 1/4	39.6 ACRES
	NW 1/4, SE 1/4	20.7 ACRES
	SW 1/4, SE 1/4	36.9 ACRES
	NE 1/4, SE 1/4	3.0 ACRES
SECTION 32	NW 1/4, NW 1/4	19.5 ACRES
	NE 1/4, NW 1/4	17.2 ACRES



*Permit no. correction and  
small stream designation (associated  
with Permit 12207) by WRD staff.  
January 13, 2010. BR*

I J. EDWARD HENRICKS, BEING DULY SWORN AS A WATER RIGHT EXAMINER LICENSE NO. 170, HAVE PREPARED THIS MAP FOR WILLAMETTE INDUSTRIES, INC. ON THIS 18th DAY OF SEPTEMBER 2000. THE AREAS HATCHED REPRESENT THE ACREAGES PUT TO BENEFICIAL USE FOR STORAGE FOR MANUFACTURING AS PER TRANSFERS 7999 AND 8000.

PREPARATION OF THIS MAP IS FOR THE PURPOSE OF IDENTIFYING THE LOCATION OF THE WATER RIGHT ONLY AND HAS NO INTENT TO PROVIDE DIMENSIONS OR LOCATION OF PROPERTY OWNERSHIP LINES.

ONLY DOCUMENTS STAMPED WITH  
RED INK ARE ORIGINALS.