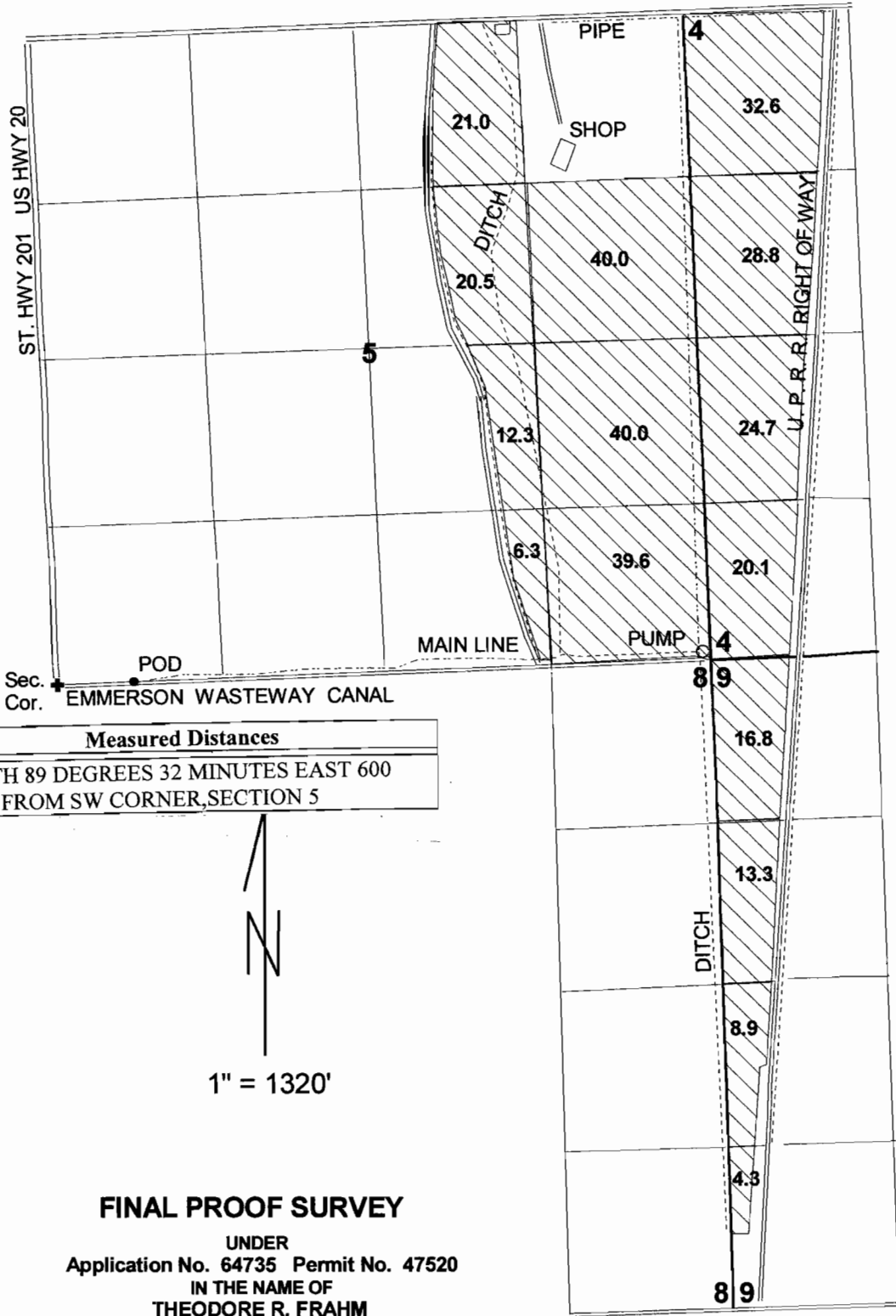


T. 19 S., R. 47 E., W. M.



Measured Distances

NORTH 89 DEGREES 32 MINUTES EAST 600
FEET FROM SW CORNER, SECTION 5



1" = 1320'

FINAL PROOF SURVEY

UNDER
Application No. 64735 Permit No. 47520

IN THE NAME OF
THEODORE R. FRAHM

Surveyed: 4-09-2003 by: J. Miller