

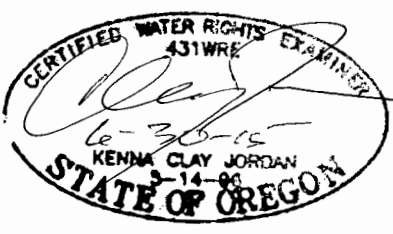
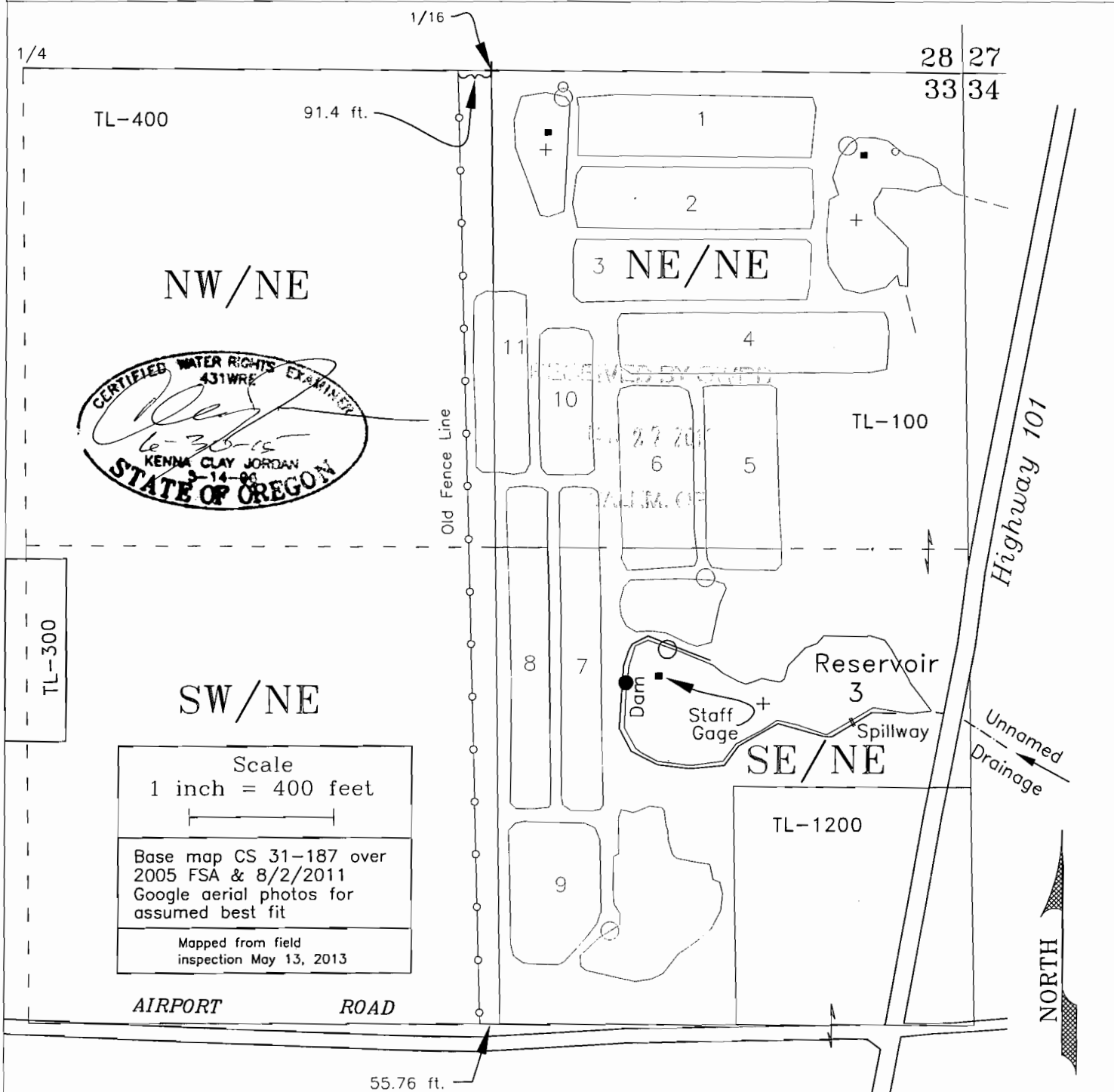
# CLAIM OF BENEFICIAL USE – REVISED

APPLICATION R-81916      PERMIT R-12464

IN THE NAME OF COVENTRY FARMS, LLC

TOWNSHIP 31 SOUTH, RANGE 15 WEST, W.M.

CURRY COUNTY OREGON



Scale  
1 inch = 400 feet

Base map CS 31-187 over  
2005 FSA & 8/2/2011  
Google aerial photos for  
assumed best fit

Mapped from field  
inspection May 13, 2013

● DAM (Maximum Height) – SE/NE, 1685 feet South & 945 feet West from the NE Corner of Section 33

Reservoir-3 – 9 Acre-Feet for Aquatic Life

+ Center of Reservoir

○ Portable Pump to evacuate water

This map is not intended to provide legal dimensions or locations of property ownership lines

JORDAN ENGINEERING  
460 JORDAN LANE  
ROSEBURG, OR 97471  
(541) 673-1931

5/30/2013 n.e.d.  
Rev-8/9/2013 n.e.d.  
Rev-1/20/2014 n.e.d.