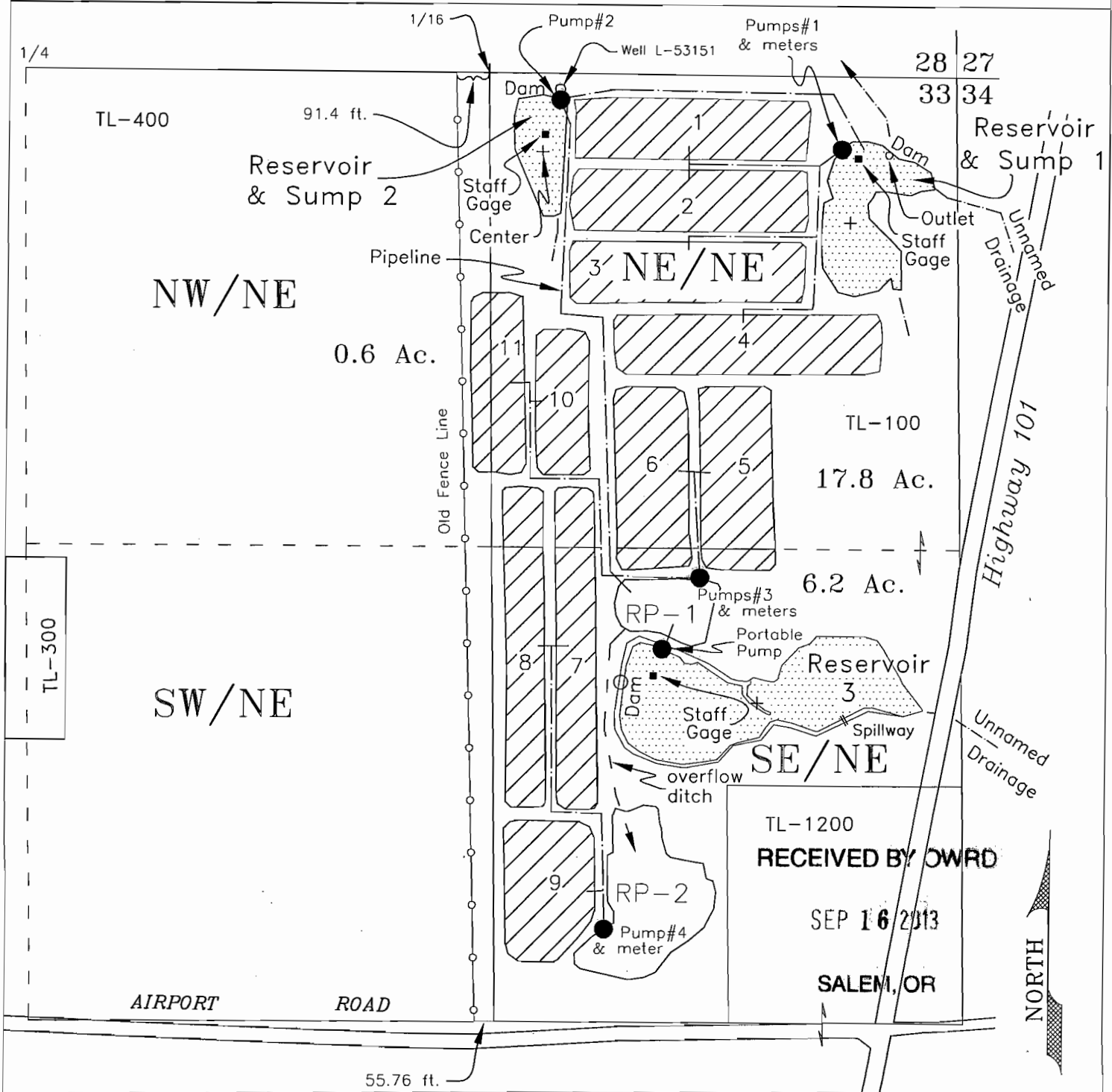


CLAIM OF BENEFICIAL USE

APPLICATION R-87020	PERMIT R-14876
APPLICATION R-87021	PERMIT R-14877
APPLICATION R-87022	PERMIT R-14878
APPLICATION S-87023	PERMIT S-54781
APPLICATION G-14839	PERMIT G-13794 T-10360

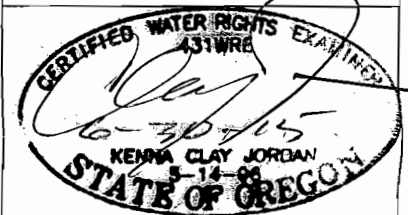
IN THE NAME OF COVENTRY FARMS, LLC
 TOWNSHIP 31 SOUTH, RANGE 15 WEST, W.M.
 CURRY COUNTY OREGON



POINTS OF DIVERSION:

- Pumps #1 (Reservoir & Sump-1)- NE/NE, 200 feet South & 320 feet West from the NE Corner of Section 33
- Pump #2 (Reservoir & Sump-2)- NE/NE, 75 feet South & 1100 feet West from the NE Corner of Section 33
- Portable Pump (Reservoir 3)- SE/NE, 1590 feet South & 830 feet West from the NE Corner of Section 33
- Reservoir-1, outlet - NE/NE, 220 feet South & 190 feet West from the NE Corner of Section 33
- + Reservoir-2, Center - NE/NE, 215 feet South & 1150 feet West from the NE Corner of Section 33
- Reservoir-3, Maximum Dam Height - SE/NE, 1685 feet South & 945 feet West from the NE Corner of Section 33

Scale
1 inch = 400 feet



Base map CS 31-178 over 2005 FSA & 2009 OSU aerial photos for assumed best fit

RP - Recovery Pond 1 & 2 and in-line bulges from Reservoirs & Sumps

Mapped from field inspection May 13, 2011

JORDAN ENGINEERING
460 JORDAN LANE
ROSEBURG, OR 97471
(541) 673-1931



Cranberry Operations
24.6 Acres

This map is not intended to provide legal dimensions or locations of property ownership lines

drawn 5/30/2013 n.e.d.
Rev. 8/14/2013 n.e.d.

