

Feb 15 08 02:09P

P.2

Dam is 2340' North and 600' west of the SE corner of section 24 being in the NE SE Sec 24

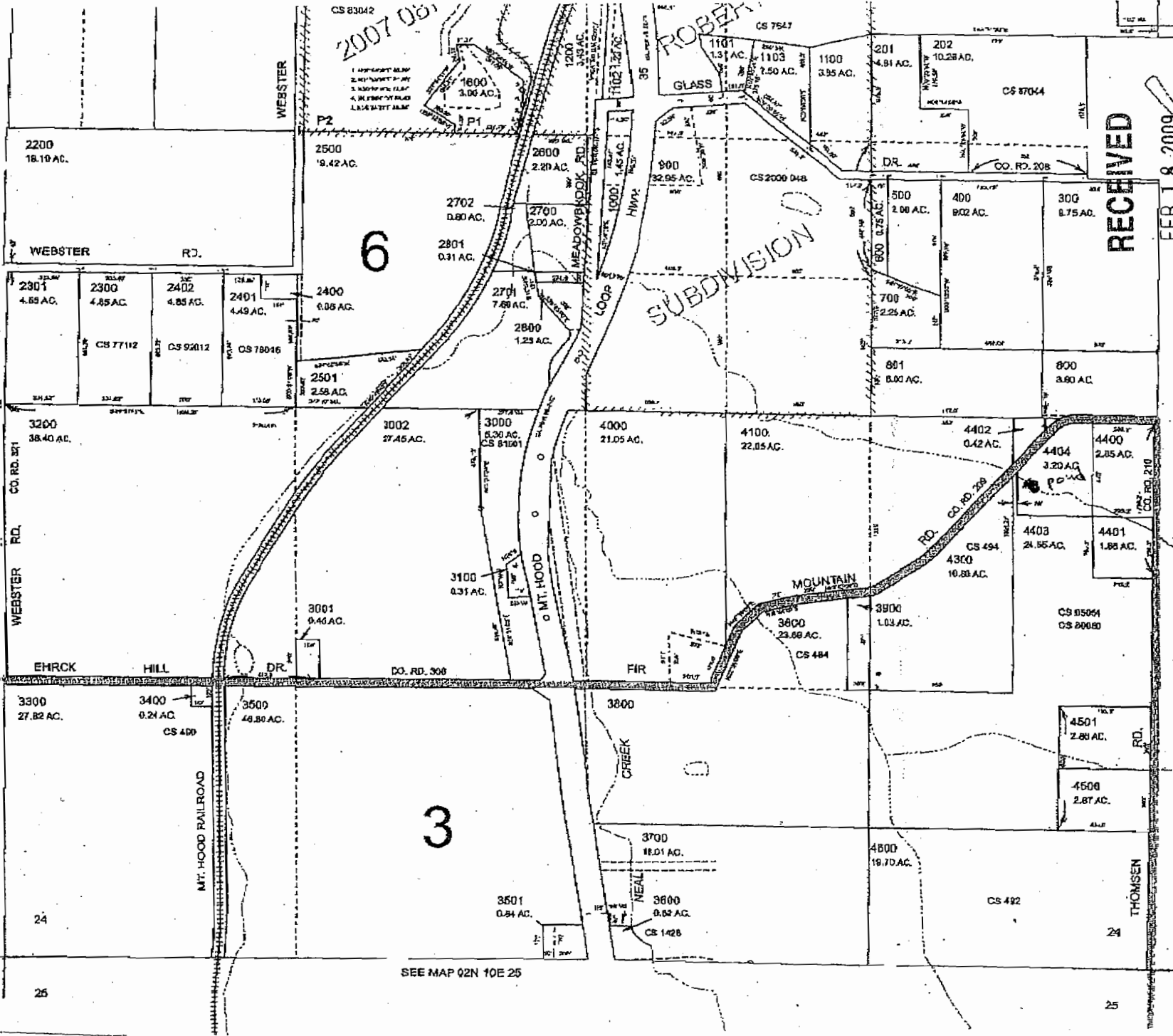
T2N R10E Sec 24, Hood River County Tax Lot 4404

1" = 600'



SEE MAP 02N 10E 23

SEE MAP 02N 10E 25



RECEIVED

FEB 18 2009

WATER RESOURCES DEPT
SALEM, OREGON

SEE MAP 02N 11E 19

19

30

App No R 87087 Remit No R 14602