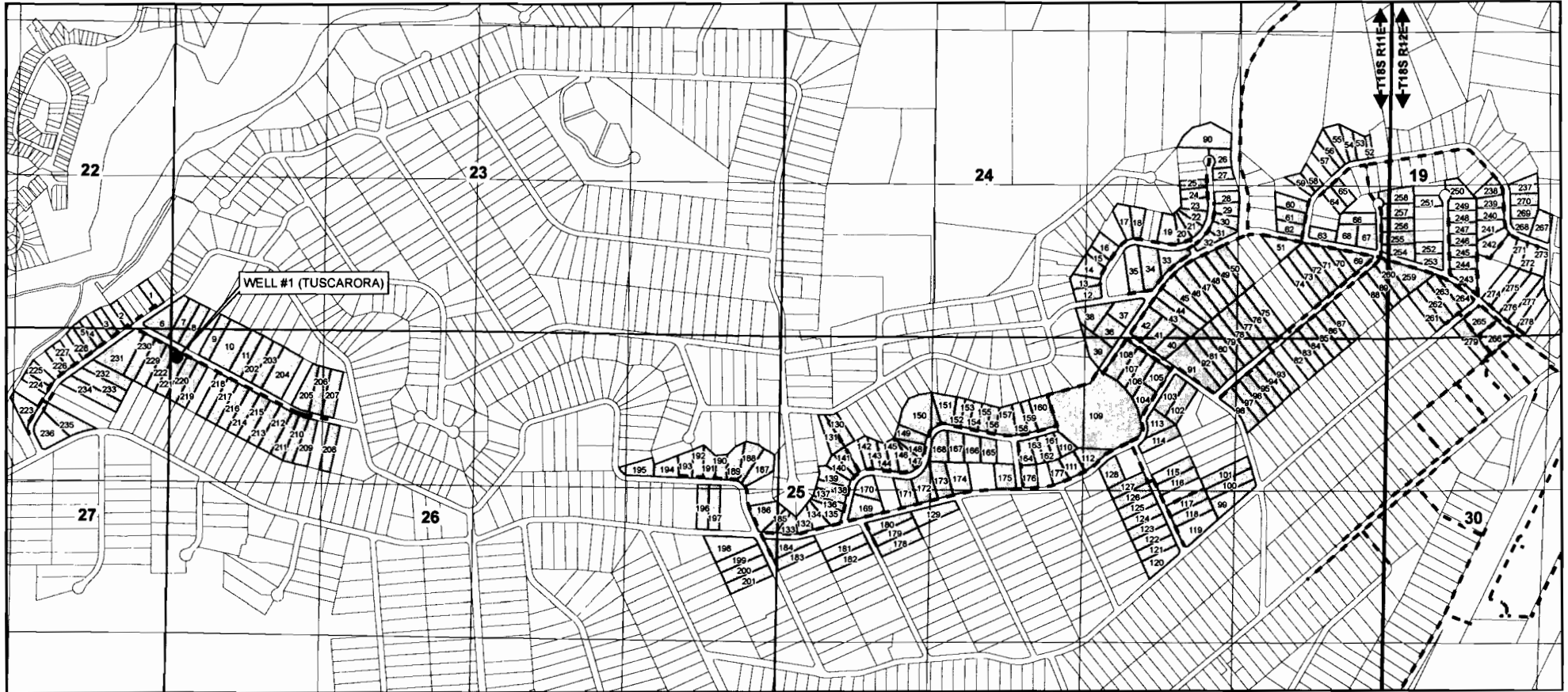




AVION WATER CO, INC.

CLAIM OF BENEFICIAL USE
PERMIT G-10000, T-7778, T-10918
APPLICATION G-10440



1 inch = 1,320 feet
0 330 660 1,320
Feet

DRAWN BY: TANNER LEMMON
AVION WATER GIS DEPARTMENT
NOVEMBER, 2008

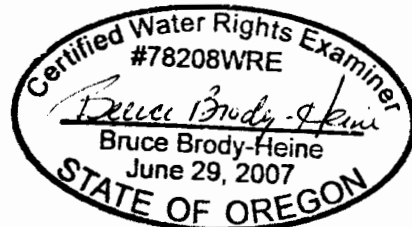
DISCLAIMER:
This map was prepared for the purpose of identifying the location of water rights only and is not intended to provide legal dimensions or locations of property ownership lines.

- Authorized Point of Appropriation
- - - Mainline (2" - 20")
- Permitted Lots (279)
- See taxlot table on sheet 2 of 2.

WELL DESCRIPTIONS

WELL #1 (TUSCARORA) -
NW 1/4, NW 1/4 of
Section 26, T 18 S, R 11 E,
WM - 228' South and 30'
East from the NW corner of
Section 26
181126B006800

Other Well Descriptions -
Refer to the attached 6
well location maps, describing
the other 13 POA locations.



EXPIRES: 12/31/11

RECEIVED
MAR 16 2010
WATER RESOURCES DEPT
SALEM, OREGON

NOTES

Measuring devices:
Tuscarora Well - At well head
and described in report Section III.
Other wells - refer to
Attachment 3 of this report.

Base Layer:
Deschutes County Taxlot Shapefile
Projected Coordinate System :
NAD 1983 StatePlane Oregon South
Geographic Coordinate System :
GCS North American 1983

RECEIVED

JAN 28 2010

AVION WATER CO, INC.

CLAIM OF BENEFICIAL USE - WELL LOCATION MAP

WATER RESOURCES DEPT

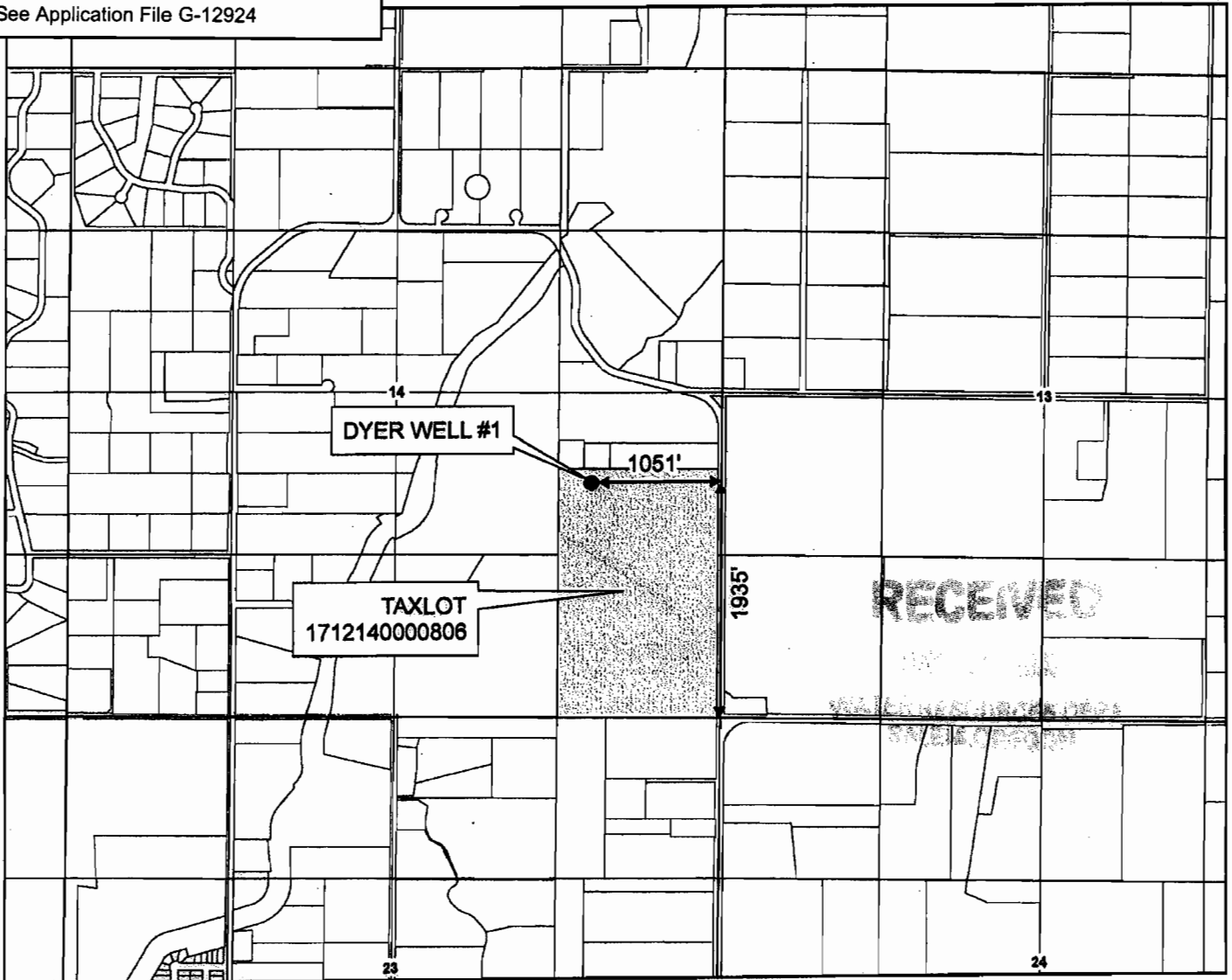
1 of 6

Application G-12924, Permit G-12788
Permit Amendments T-7778; T-10407
Deschutes County

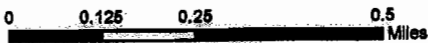
SALEM, OREGON

T17S R12E

FOR ORIGINAL POLYESTER FILM MAP
See Application File G-12924



1 inch equals 1,320 feet



DRAWN BY: TANNER LEMMON
AVION WATER GIS DEPARTMENT
MARCH, 2008

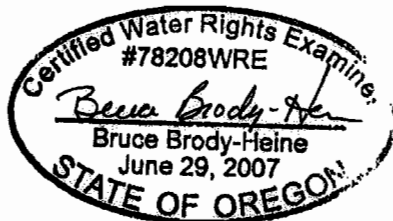
DISCLAIMER:
This map was prepared for the purpose
of identifying the location of water rights
only and is not intended to provide legal
dimensions or locations of property
ownership lines.

Legend

- POINT OF APPROPRIATION
- WELL SITE

WELL DESCRIPTION

DYER WELL # 1 -
NE 1/4, SE 1/4 of
Section 14, T 17 S, R 12 E,
WM - 1935' North and 1051'
West from the SE corner of
Section 14
Taxlot - 1712140000806



EXPIRES: 12/31/09

NOTES:

Measuring devices:
Refer to Attachment 6

Conveyance System:
Refer to the overview map in
Attachment 1

Base Layer:
Deschutes County Taxlot Shapefile
Projected Coordinate System :
NAD 1983 StatePlane Oregon South
Geographic Coordinate System :
GCS North American 1983

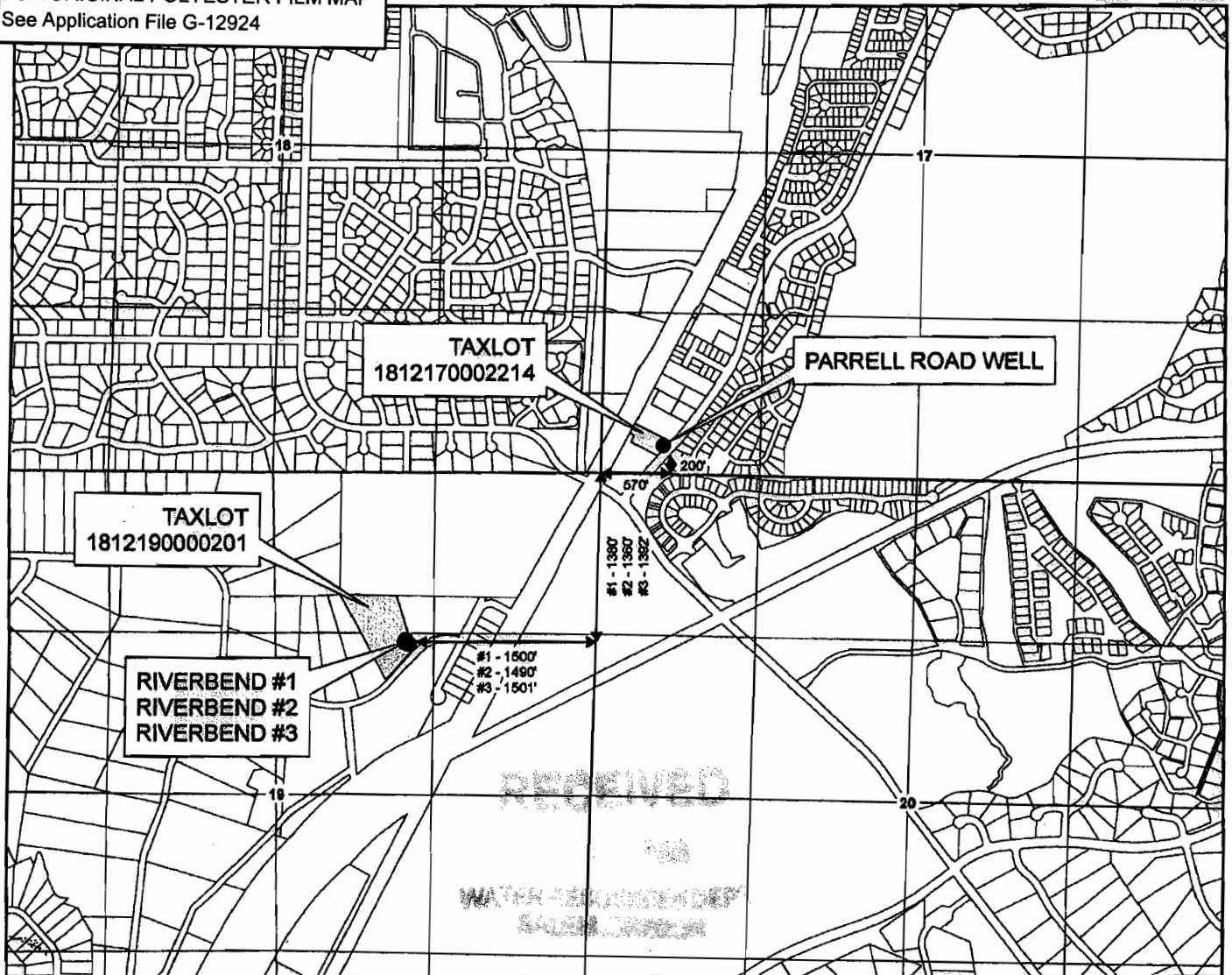


AVION WATER CO, INC.
CLAIM OF BENEFICIAL USE - WELL LOCATION MAP

Application G-12924, Permit G-12788
 Permit Amendments T-7778; T-10407
 Deschutes County

T18S R12E

FOR ORIGINAL POLYESTER FILM MAP
 See Application File G-12924



1 Inch equals 1,320 feet



DRAWN BY: TANNER LEMMON
 AVION WATER GIS DEPARTMENT
 MARCH, 2008

DISCLAIMER:
 This map was prepared for the purpose of identifying the location of water rights only and is not intended to provide legal dimensions or locations of property ownership lines.

Legend

- POINTS OF APPROPRIATION
- WELL SITES

WELL DESCRIPTION

PARRELL ROAD WELL -
 SW 1/4, SW 1/4 of
 Section 17, T 18 S, R 12 E,
 WM - 200' North and 570'
 East from the SW corner of
 Section 17
 Taxlot - 1812170002214

RIVERBEND #1 (WELL 5) -
 SW 1/4, NE 1/4 of
 Section 19, T 18 S, R 12 E,
 WM - 1380' South and 1500'
 West from the NE corner of
 Section 19
 Taxlot - 1812190000201

RIVERBEND #2 (WELL B-2) -
 SW 1/4, NE 1/4 of
 Section 19, T 18 S, R 12 E,
 WM - 1360' South and 1490'
 West from the NE corner of
 Section 19
 Taxlot - 1812190000201

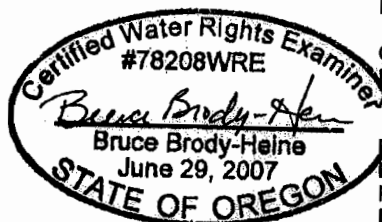
RIVERBEND #3 -
 SW 1/4, NE 1/4 of
 Section 19, T 18 S, R 12 E,
 WM - 1392' South and 1501'
 West from the NE corner of
 Section 19
 Taxlot - 1812190000201

NOTES:

Measuring devices:
 Refer to Attachment 6

Conveyance System:
 Refer to the overview map in
 Attachment 1

Base Layer:
 Deschutes County Taxlot Shapefile
 Projected Coordinate System :
 NAD 1983 StatePlane Oregon South
 Geographic Coordinate System :
 GCS North American 1983



EXPIRES: 12/31/09

RECEIVED

JAN 28 2010

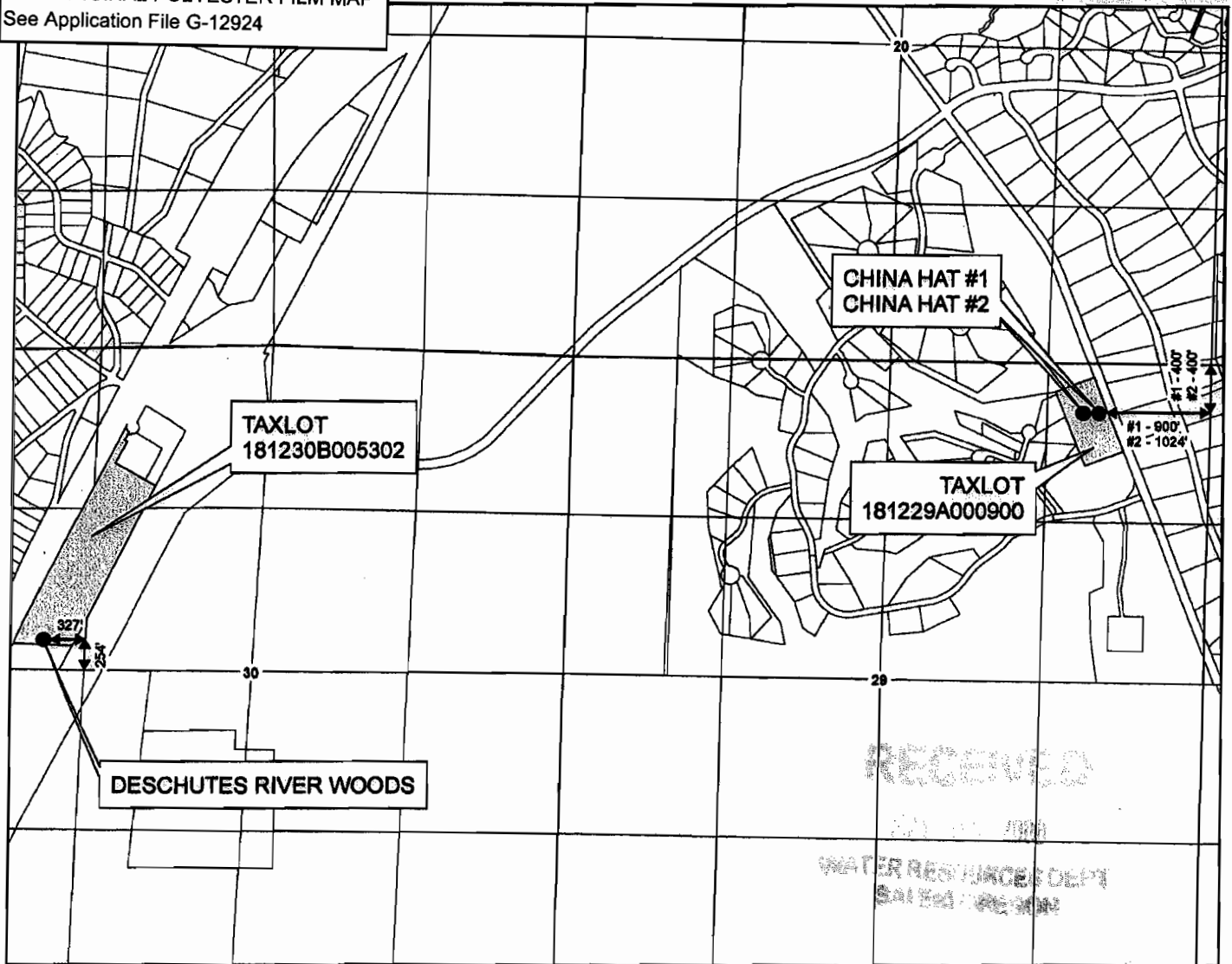
AVION WATER CO, INC.
CLAIM OF BENEFICIAL USE - WELL LOCATION MAP

WATER RESOURCES DEPT 3 of 6
SALEM, OREGON

Application G-12924, Permit G-12788
Permit Amendments T-7778; T-10407
Deschutes County

T18S R12E

FOR ORIGINAL POLYESTER FILM MAP
See Application File G-12924



RECEIVED
JAN 28 2010
WATER RESOURCES DEPT
SALEM, OREGON

1 inch equals 1,320 feet



DRAWN BY: TANNER LEMMON
AVION WATER GIS DEPARTMENT
MARCH, 2008

DISCLAIMER:
This map was prepared for the purpose
of identifying the location of water rights
only and is not intended to provide legal
dimensions or locations of property
ownership lines.

Legend

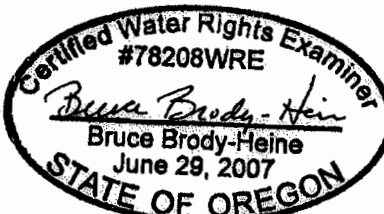
- POINTS OF APPROPRIATION
- WELL SITES

WELL DESCRIPTION

DESCHUTES RIVER WOODS -
SW 1/4, NW 1/4 of
Section 30, T 18 S, R 12 E,
WM - 254' North and 327'
West from the SE corner of
SW 1/4, NW 1/4, Section 30
Taxlot - 181230B005302

CHINA HAT WELL #1 -
NE 1/4, NE 1/4 of
Section 29, T 18 S, R 12 E,
WM - 400' South and 900'
West from the NE corner of
Section 29
Taxlot - 181229A000900

CHINA HAT #2 -
NE 1/4, NE 1/4 of
Section 29, T 18 S, R 12 E,
WM - 400' South and 1024'
West from the NE corner of
Section 29
Taxlot - 181229A000900



EXPIRES: 12/31/09

NOTES:

Measuring devices:
Refer to Attachment 6

Conveyance System:
Refer to the overview map in
Attachment 1

Base Layer:
Deschutes County Taxlot Shapefile
Projected Coordinate System :
NAD 1983 StatePlane Oregon South
Geographic Coordinate System :
GCS North American 1983

AVION WATER CO, INC.

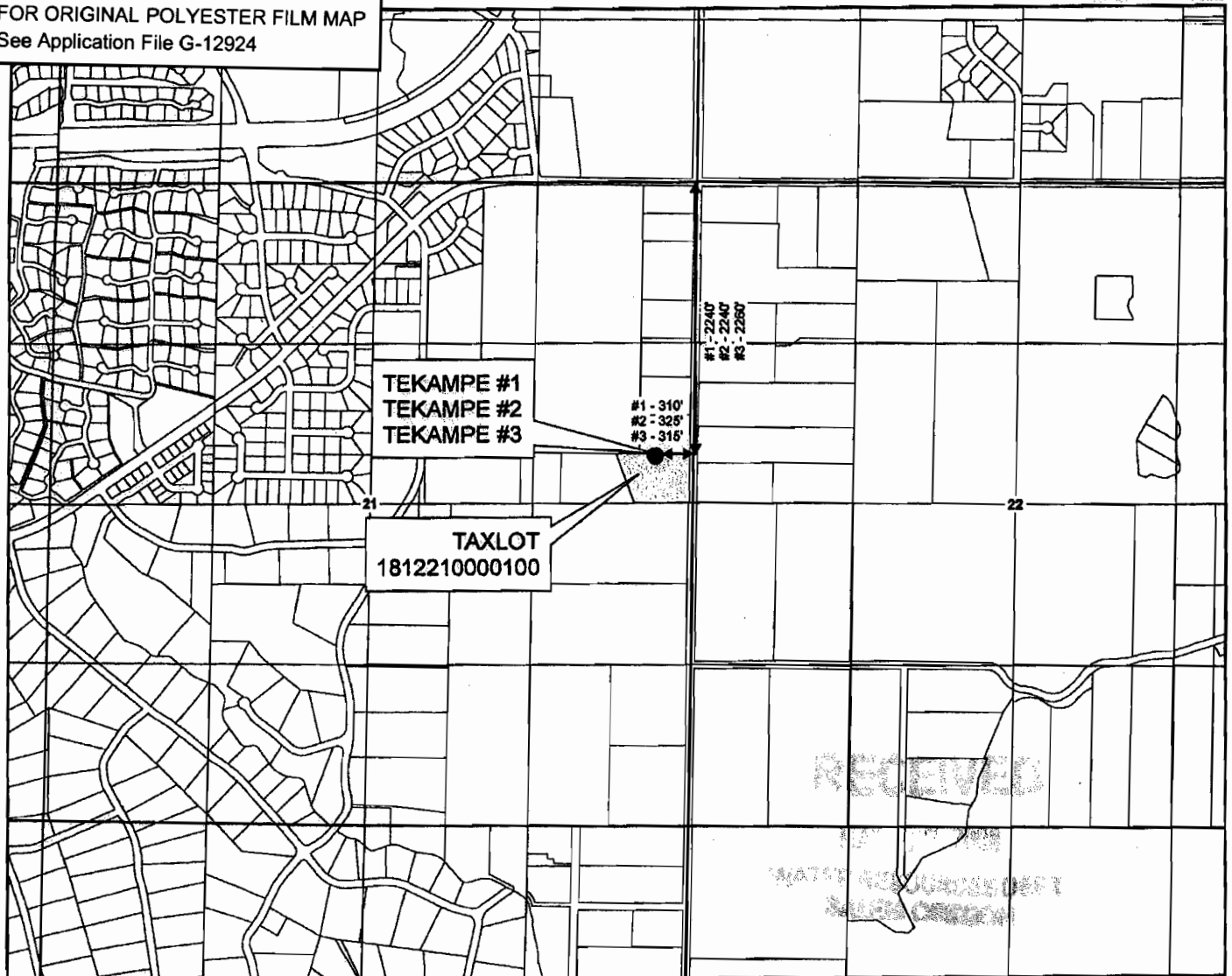
CLAIM OF BENEFICIAL USE - WELL LOCATION MAP

4 of 6

Application G-12924, Permit G-12788
Permit Amendments T-7778; T-10407
Deschutes County

T18S R12E

FOR ORIGINAL POLYESTER FILM MAP
See Application File G-12924



1 inch equals 1,320 feet



DRAWN BY: TANNER LEMMON
AVION WATER GIS DEPARTMENT
MARCH, 2008

DISCLAIMER:

This map was prepared for the purpose of identifying the location of water rights only and is not intended to provide legal dimensions or locations of property ownership lines.

Legend

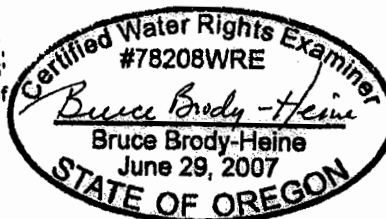
- POINTS OF APPROPRIATION
- WELL SITE

WELL DESCRIPTION

TEKAMPE #1 (WELL C-1) -
SE 1/4, NE 1/4 of
Section 21, T 18 S, R 12 E,
WM - 2240' South and 310'
West from the NE corner of
Section 21
Taxlot - 1812210000100

TEKAMPE #2 (WELL C-3) -
SE 1/4, NE 1/4 of
Section 21, T 18 S, R 12 E,
WM - 2240' South and 325'
West from the NE corner of
Section 21
Taxlot - 1812210000100

TEKAMPE #3 (WELL C-2) -
SE 1/4, NE 1/4 of
Section 21, T 18 S, R 12 E,
WM - 2260' South and 315'
West from the NE corner of
Section 21
Taxlot - 1812210000100



EXPIRES: 12/31/09

NOTES:

Measuring devices:
Refer to Attachment 6

Conveyance System:
Refer to the overview map in
Attachment 1

Base Layer:
Deschutes County Taxlot Shapefile
Projected Coordinate System :
NAD 1983 StatePlane Oregon South
Geographic Coordinate System :
GCS North American 1983

RECEIVED

JAN 28 2010

5 of 6

AVION WATER CO, INC.
CLAIM OF BENEFICIAL USE - WELL LOCATION MAP

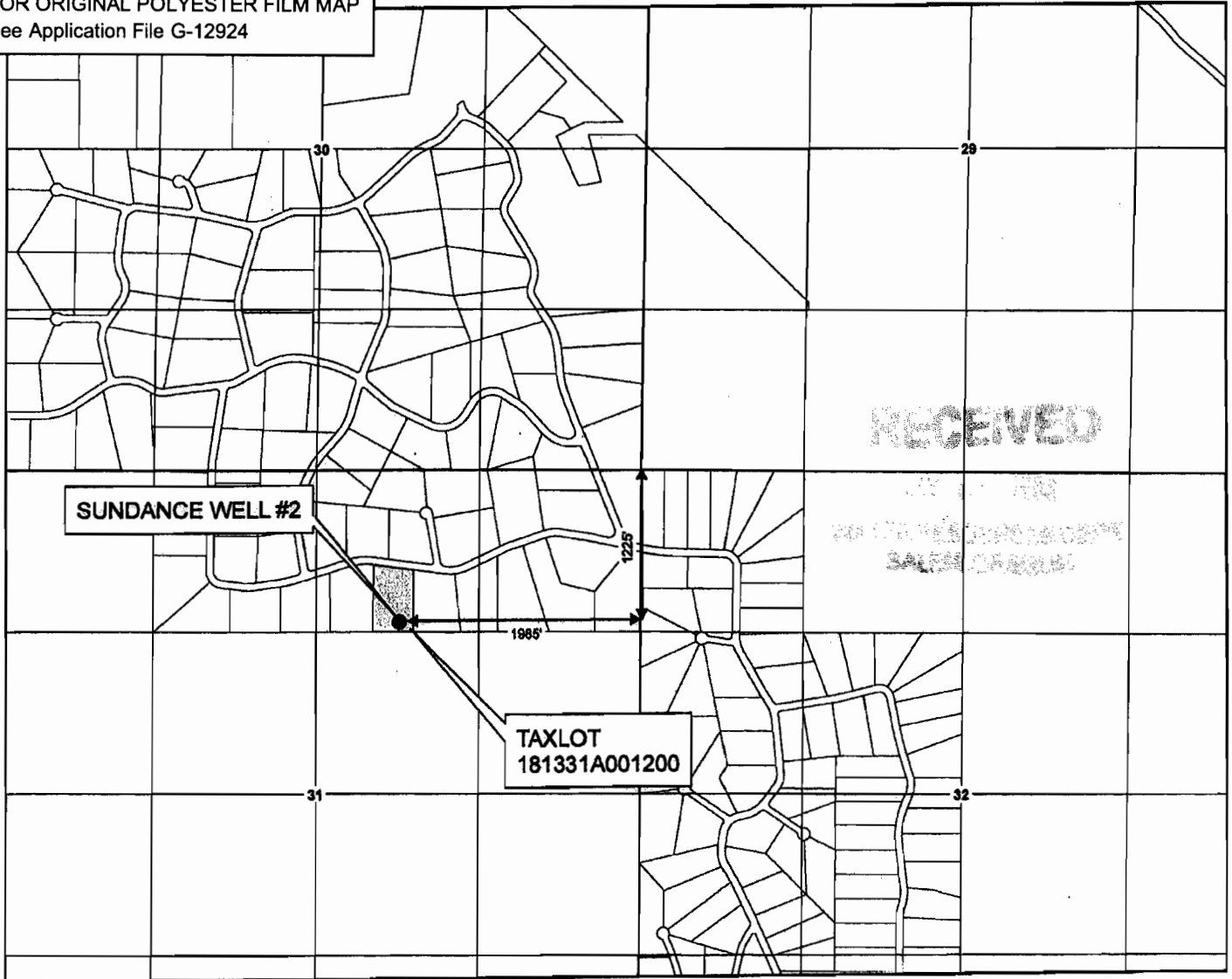
Application G-12924, Permit G-12788
Permit Amendments T-7778; T-10407
Deschutes County

WATER RESOURCES DEPT
SALEM, OREGON

T18S R13E



FOR ORIGINAL POLYESTER FILM MAP
See Application File G-12924



1 inch equals 1,320 feet



DRAWN BY: TANNER LEMMON
AVION WATER GIS DEPARTMENT
MARCH, 2008

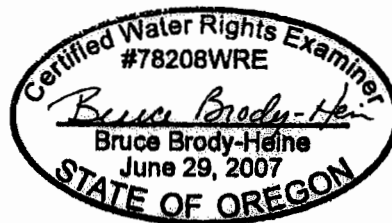
DISCLAIMER:
This map was prepared for the purpose
of identifying the location of water rights
only and is not intended to provide legal
dimensions or locations of property
ownership lines.

Legend

- POINT OF APPROPRIATION
- WELL SITE

WELL DESCRIPTION

SUNDANCE WELL #2 (WELL N-2) -
NW 1/4, NE 1/4 of
Section 31, T 18 S, R 13 E,
WM - 1225' South and 1985'
West from the NE corner of
Section 31
Taxlot - 181331A001200



EXPIRES: 12/31/08

NOTES:

Measuring devices:
Refer to Attachment 6

Conveyance System:
Refer to the overview map in
Attachment 1

Base Layer:
Deschutes County Taxlot Shapefile
Projected Coordinate System :
NAD 1983 StatePlane Oregon South
Geographic Coordinate System :
GCS North American 1983



AVION WATER CO, INC.

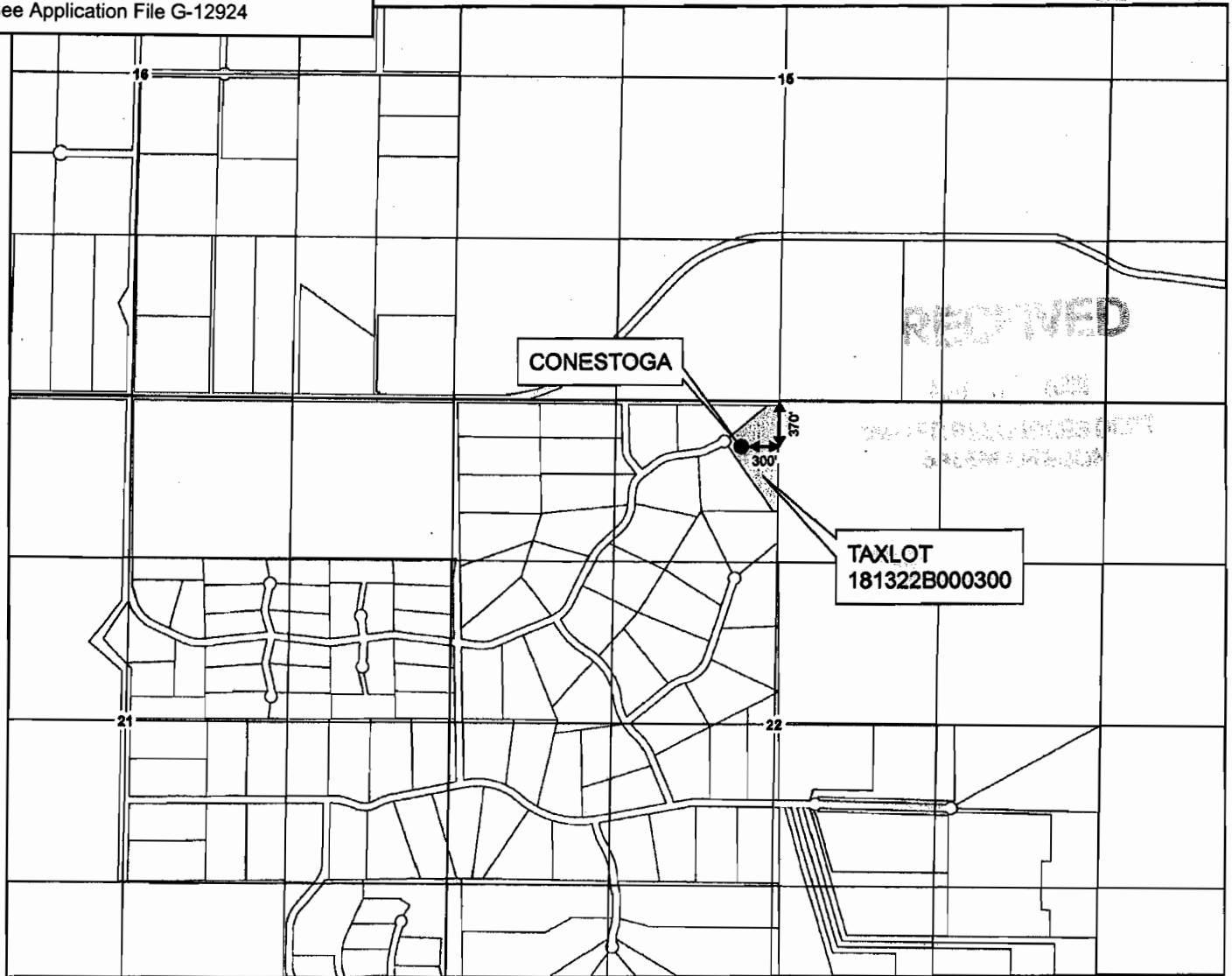
CLAIM OF BENEFICIAL USE - WELL LOCATION MAP

6 of 6

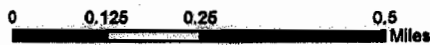
Application G-12924, Permit G-12788
Permit Amendments T-7778; T-10407
Deschutes County

FOR ORIGINAL POLYESTER FILM MAP
See Application File G-12924

T18S R13E



1 inch equals 1,320 feet



DRAWN BY: TANNER LEMMON
AVION WATER GIS DEPARTMENT
MARCH, 2006

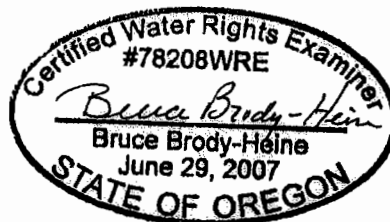
DISCLAIMER:
This map was prepared for the purpose of identifying the location of water rights only and is not intended to provide legal dimensions or locations of property ownership lines.

Legend

- POINT OF APPROPRIATION
- WELL SITE

WELL DESCRIPTION

CONESTOGA (WELL R) -
NE 1/4, NW 1/4 of
Section 22, T 18 S, R 13 E,
WM - 370' South and 300'
West from the N 1/4 corner of
Section 22
Taxlot - 181322B000300



EXPIRES: 12/31/09

NOTES:

Measuring devices:
Refer to Attachment 6

Conveyance System:
Refer to the overview map in
Attachment 1

Base Layer:
Deschutes County Taxlot Shapefile
Projected Coordinate System :
NAD 1983 StatePlane Oregon South
Geographic Coordinate System :
GCS North American 1983