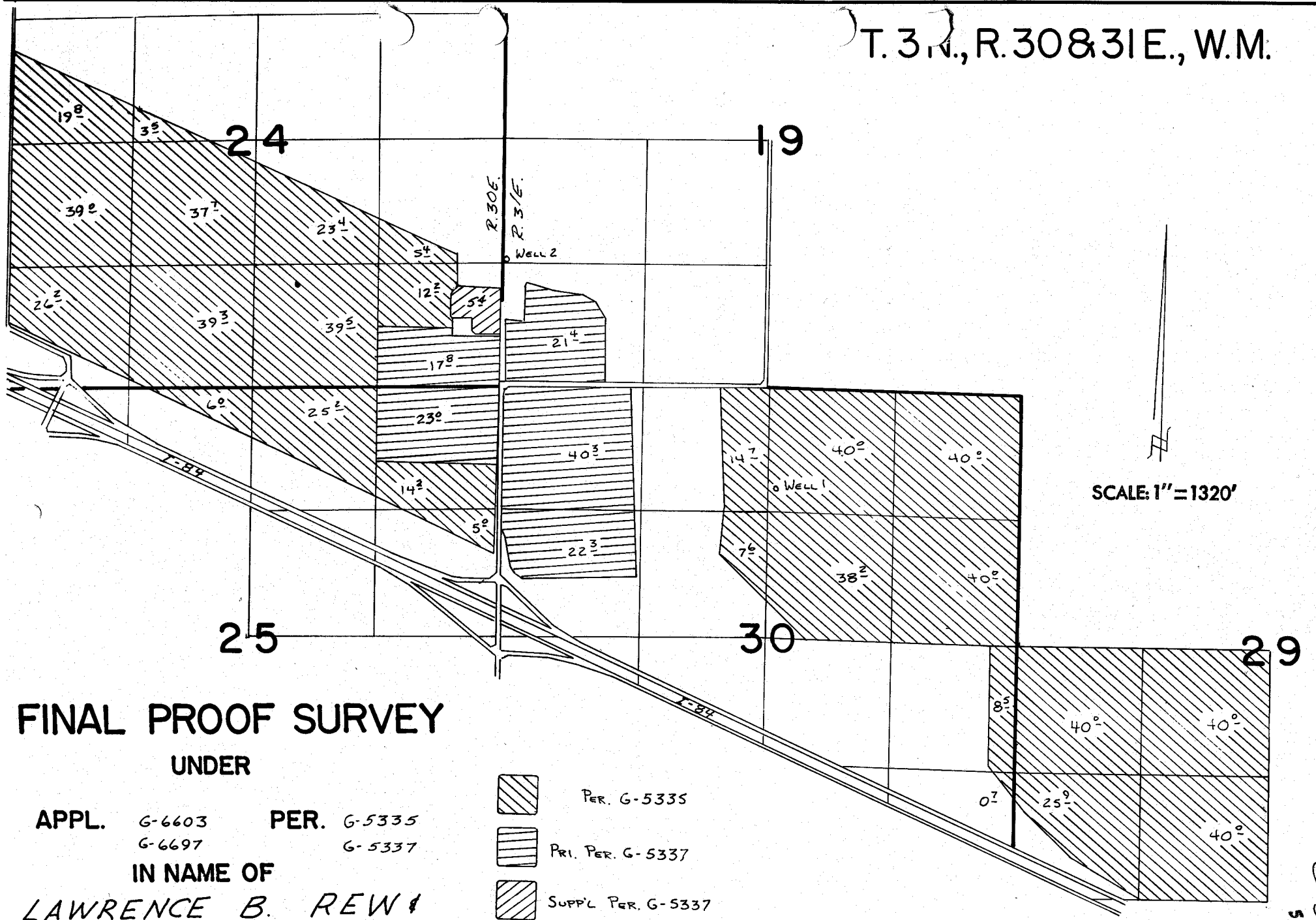


T. 3 N., R. 30 & 31 E., W.M.



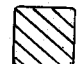

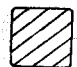
SCALE: 1" = 1320'

FINAL PROOF SURVEY

UNDER

APPL. G-6603 PER. G-5335
 G-6697 G-5337

IN NAME OF
LAWRENCE B. REW &
REW RANCHES, INC.

-  PER. G-5335
-  PRI. PER. G-5337
-  SUPPL. PER. G-5337

WELL 1 LOCATED 1070' S. & 90' E. FROM N 1/4 COR. SEC 30 T. 3N., R. 31E.

SURVEYED NOVEMBER 28, 1977 by R. BARWIN

G-5335
54559