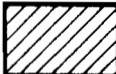
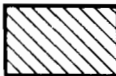


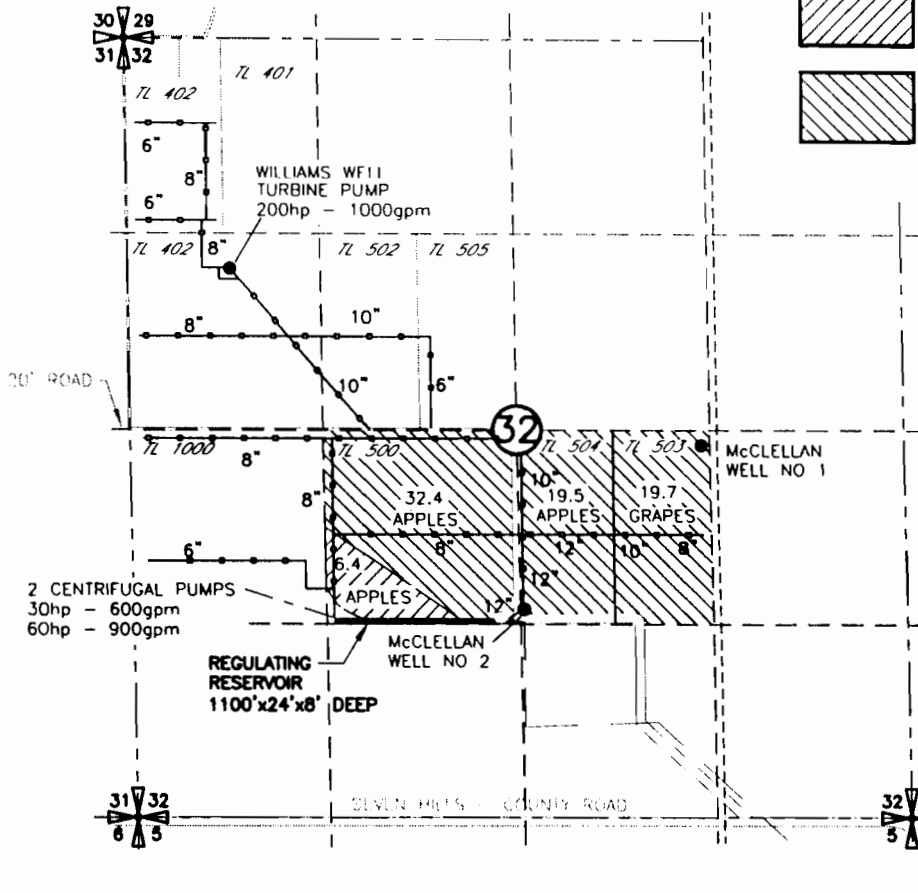


FINAL PROOF MAP  
 OF PERMIT G-13431  
 FOR  
 ESTATE OF JAMES McCLELLAN  
 T6N, R35E

G-14309

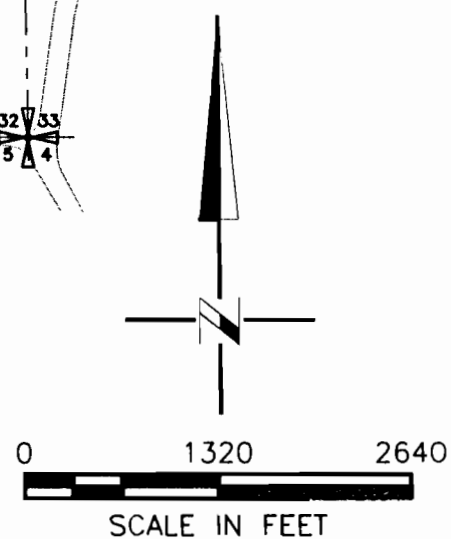
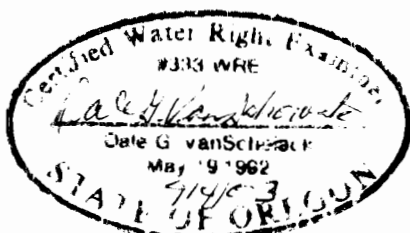
LEGEND

-  PRIMARY IRRIGATION
-  SUPPLEMENTAL IRRIGATION
-  AGRICULTURAL USE (TEMPERATURE CONTROL AND FROST PROTECTION)
- 



RECEIVED  
 WATER RESOURCES DEPT.  
 SALEM, OREGON

POINTS OF APPROPRIATION  
 McCLELLAN WELL NO 2  
 LOCATED 1418' N AND 22.1' E FROM THE  
 S 1/4 CORNER OF SEC 32



DRAWING: H:\CAD\AG\3522\172\3522172FP.DWG  
 PRINTED BY: rogerw on 09/04/03 08:08 AM  
 9/04/03

NOTE:  
 THE PURPOSE OF THIS MAP IS TO IDENTIFY THE APPROXIMATE LOCATION  
 OF THE WATER RIGHT. IT IS NOT INTENDED TO PROVIDE INFORMATION  
 RELATIVE TO THE LOCATION OF PROPERTY OWNERSHIP BOUNDARY LINES.

