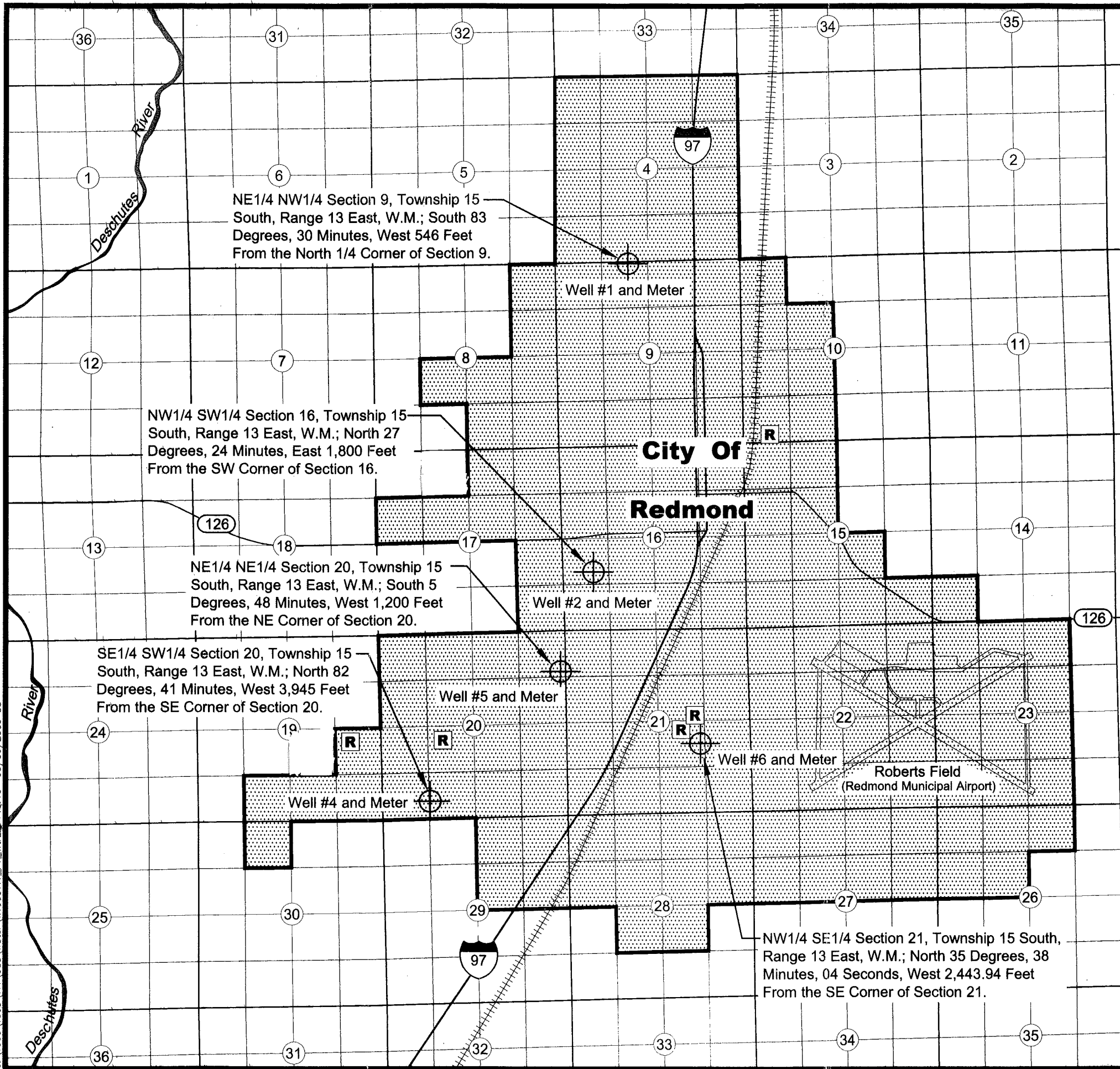


G:\1000\1003\TTT\Cad\Water\W1003T11\_F1\_WtrRt.dwg 16:10 05/06/2009 SS



NE1/4 NW1/4 Section 9, Township 15 South, Range 13 East, W.M.; South 83 Degrees, 30 Minutes, West 546 Feet From the North 1/4 Corner of Section 9.

NW1/4 SW1/4 Section 16, Township 15 South, Range 13 East, W.M.; North 27 Degrees, 24 Minutes, East 1,800 Feet From the SW Corner of Section 16.

NE1/4 NE1/4 Section 20, Township 15 South, Range 13 East, W.M.; South 5 Degrees, 48 Minutes, West 1,200 Feet From the NE Corner of Section 20.

SE1/4 SW1/4 Section 20, Township 15 South, Range 13 East, W.M.; North 82 Degrees, 41 Minutes, West 3,945 Feet From the SE Corner of Section 20.

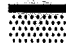



NW1/4 SE1/4 Section 21, Township 15 South, Range 13 East, W.M.; North 35 Degrees, 38 Minutes, 04 Seconds, West 2,443.94 Feet From the SE Corner of Section 21.

**CLAIM OF BENEFICIAL USE**

**T-10162**

Place of Use Located in Sections  
4, 8, 9, 10, 14, 15, 16, 17, 19,  
20, 21, 22, 23, 26, 27, 28, 29, & 30  
T15S, R13E W.M.  
Deschutes County, Oregon

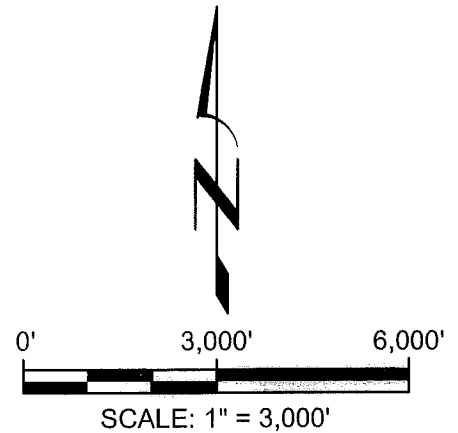
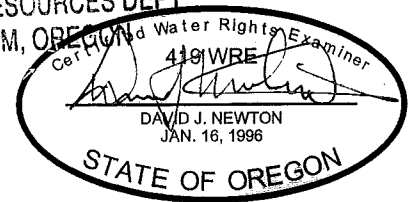
**EXPLANATION**

-  Place Of Use For Water Right Certificate 80233
-  Well #1, 2, 4, 5, 6
-  Current Points of Appropriation and Meters Under Water Certificate 80233 and T-10162.
-  Approximate Location of Reservoir

**RECEIVED**

OCT 19 2009

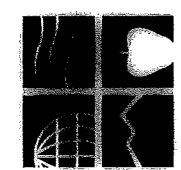
WATER RESOURCES DEPT  
SALEM, OREGON



**NOTES**

1. THIS MAP WAS PREPARED FOR THE PURPOSE OF IDENTIFYING THE LOCATION OF WATER RIGHTS ONLY AND IS NOT INTENDED TO PROVIDE LEGAL DIMENSIONS OR LOCATIONS OF PROPERTY OWNERSHIP LINES.

Place of Beneficial Use T-10162  
Water Right Certificate 80233  
City of Redmond, Oregon



**NEWTON**  
CONSULTANTS INC.  
Earth, Water and Rock Specialists  
Ph: 541 504-9960  
Fax: 541 504-9961

DESIGNED BY: K. Turner

DRAWN BY: S. Schenck

DATE: Oct 2009

PROJECT NO. 1003-111

FIGURE 2