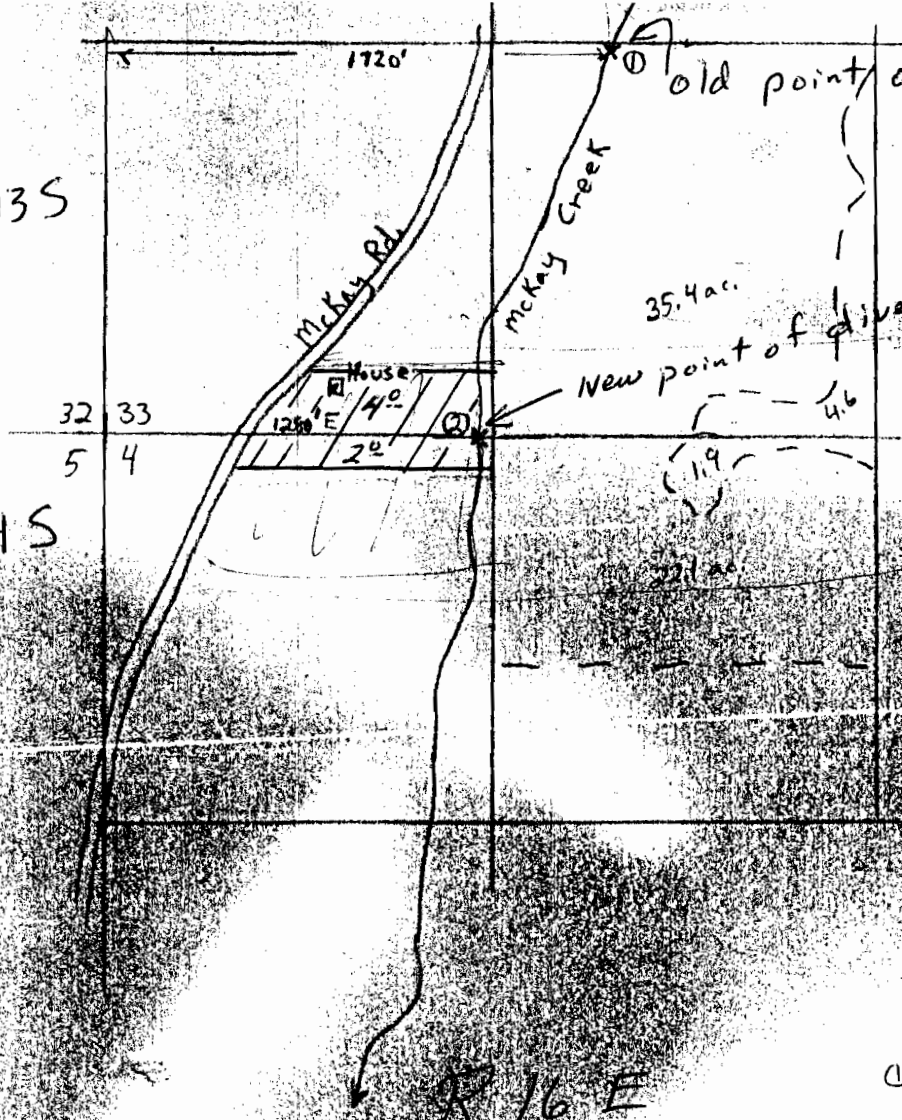


T 13 S
N
T 14 S



T-4699
WATER RESOURCES DEPT
SALEM, OREGON
FEB 18 1981
RECEIVED

Point of Diversion

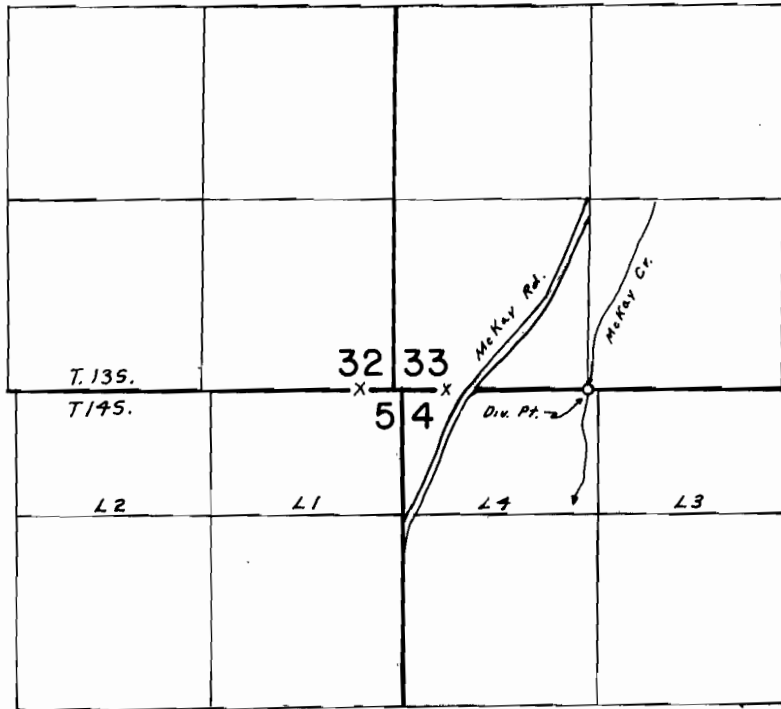
- ① SE ¼ SW ¼ Section 33
1310' N. 1720' East of SW corner
Section 33 R. 16 E
T. 13 S.
- ② NW ¼ NW ¼ Section 4
1280' East of NW corner
Section 4 R. 16 E.
T. 14 S.

Measurement from
Aerial Photograph

1 FF-164
8" = 1 mile

Earl Munn

T.13&14S., R.16E., W.M.



Div. Pt. Loc. 10' N. & 1320' E From the S.W. Cor. Sec. 33

SCALE: 1"=1320'

FINAL PROOF SURVEY

UNDER

TRANSFER 4699

IN NAME OF

EARL MUSSER

Surveyed SEPT. 28, 1988, by B. BISHOP