

water storage application

Tax Lot : 1500 ~~1600~~

MAP 1 of 2

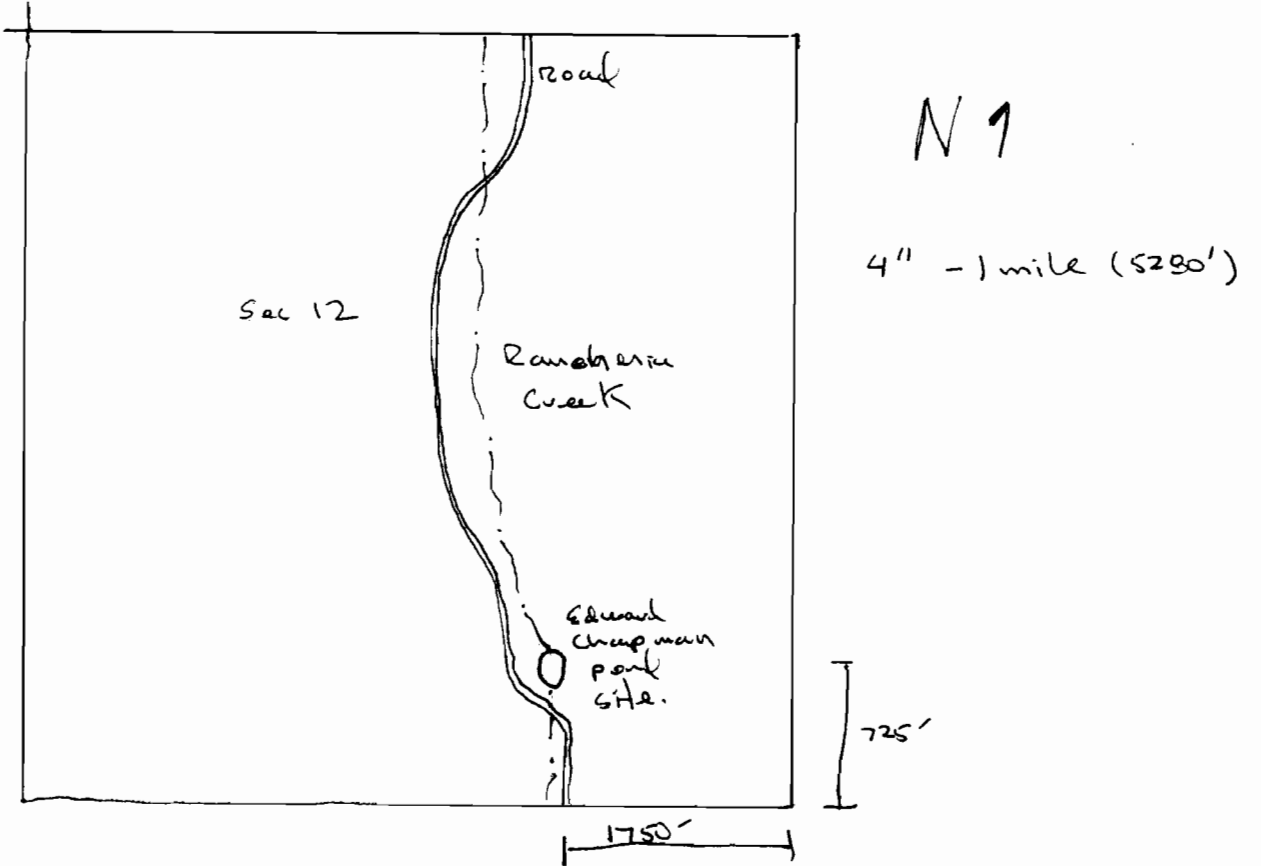
Legal : SW 1/4 of NE 1/4 and W 1/2 of SE 1/4 Sec 12
T11S R9 E

Coordinates : N 44° 37' 0.56"
W 117° 52' 36.46"

Name : Edward Chapman Pond.
Sec 1

Sec 2

Sec 11



pond location : 1750' west and 725' north
of South East corner of Sec 12.

RECEIVED

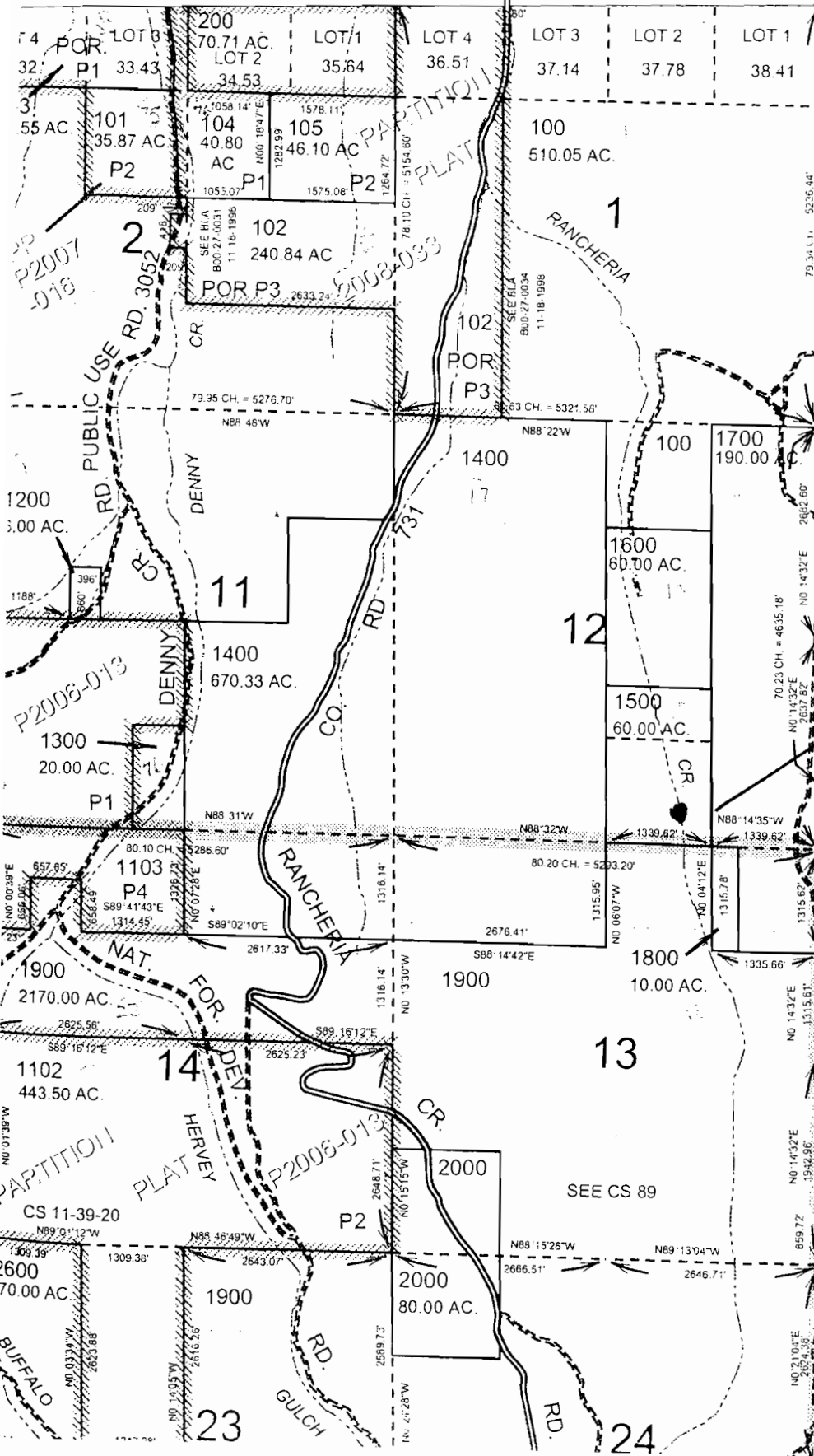
JUN 19 2003

WATER RESOURCES DEPT.
SALEM, OREGON

app no R-85657 Permit no. R-13747

CANCELLED:

SCOUTH



Pond

SEE MAP 11S 40E

RECEIVED

JUN 10 2009

**WATER RESOURCES DEPT
SALEM, OREGON**