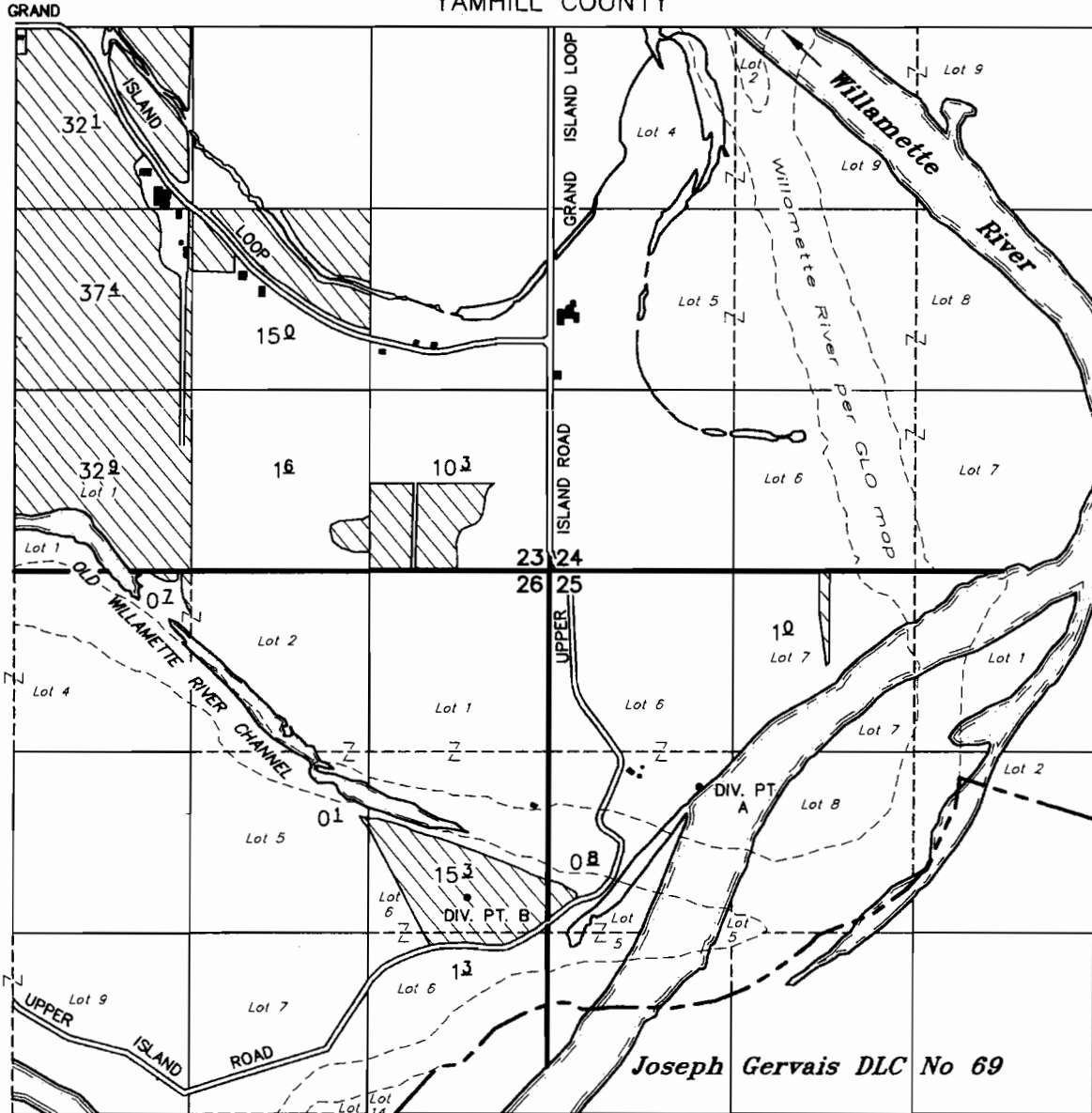


# T.5S. R.3W. W.M.

YAMHILL COUNTY



DIV. PT. A: 1585' S AND 1050' E FROM THE NW COR SEC 25  
 DIV. PT. B: 2383' S AND 585' W FROM THE NE COR SEC 26

## FINAL PROOF SURVEY UNDER

RECEIVED

**TAX LOTS:**

053W23 00600  
 053W23 01100  
 053W23 01200  
 053W23 01300  
 053W25 00100  
 053W26 00100  
 053W26 00200  
 053W26 00800

GR-1540	GR-1483
GR-3155	GR-2961
GR-3156	GR-2962
GR-3567	GR-3276
S-72040	53347

Application No. \_\_\_\_\_ Permit No. \_\_\_\_\_

### A & R SPADA FARMS

NOTE: This map is for the purpose of identifying the location of water rights and has no intent to dimension or locate property ownership lines.

SEPTEMBER 14, 1999  
 rev July 3, 2007  
 rev December 14, 2007

SCALE: 1" = 1320'



RENEWAL DATE: 12-31-07