

T5N, R35E, WM
Sections 3, 4, 5, 8, 9, 10
T6N, R35E, WM
Sections 31 and 32
UMATILLA COUNTY

Points of Appropriation

POA 3A: 1156 ft N and 314 ft E from S/4 Corner of Section 3. Flowmeter in same location. Well Log UMAT 55526.
POA 4A: 415 ft S and 500 ft W from Center of Section 4. Flowmeter in same location. Well Log UMAT 55523.

POA 4D: 375 ft S and 940 ft W from Center of Section 4. Flowmeter in same location. Well Log UMAT 56382.
POA 50516: 930 ft S and 1355 ft E from NW Corner of Section 4. Flowmeter in same location. Well Log UMAT 50516.

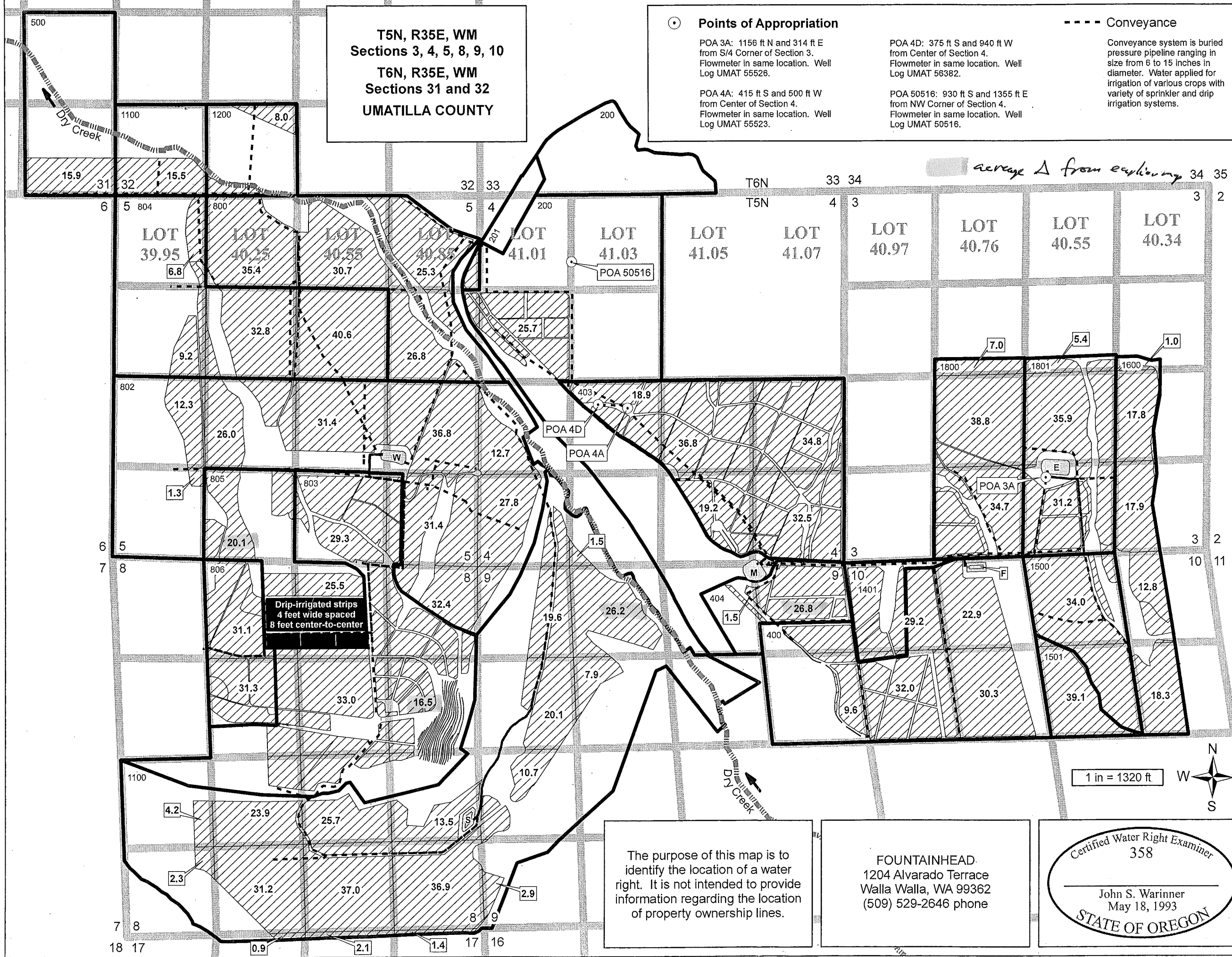
Conveyance

Conveyance system is buried pressure pipeline ranging in size from 6 to 15 inches in diameter. Water applied for irrigation of various crops with variety of sprinkler and drip irrigation systems.

Place of Use

Water used for irrigation of 1528.0 acres:

- T5N, R35E, Sec 3, SW NE, 5.4 acres
- T5N, R35E, Sec 3, SE NE, 1.0 acre
- T5N, R35E, Sec 3, SE NW, 7.0 acres
- T5N, R35E, Sec 3, NE SW, 38.8 acres
- T5N, R35E, Sec 3, SE SW, 34.7 acres
- T5N, R35E, Sec 3, NE SE, 17.8 acres
- T5N, R35E, Sec 3, NW SE, 35.9 acres
- T5N, R35E, Sec 3, SW SE, 31.2 acres
- T5N, R35E, Sec 3, SE SE, 17.9 acres
- T5N, R35E, Sec 4, SW NW, 25.7 acres
- T5N, R35E, Sec 4, NE SW, 18.9 acres
- T5N, R35E, Sec 4, NW SW, 12.7 acres
- T5N, R35E, Sec 4, SW SW, 27.8 acres
- T5N, R35E, Sec 4, SE SW, 1.5 acres
- T5N, R35E, Sec 4, NE SE, 34.8 acres
- T5N, R35E, Sec 4, NW SE, 36.8 acres
- T5N, R35E, Sec 4, SW SE, 19.2 acres
- T5N, R35E, Sec 4, SE SE, 32.5 acres
- T5N, R35E, Sec 5, NE NE, 25.3 acres
- T5N, R35E, Sec 5, NW NE, 30.7 acres
- T5N, R35E, Sec 5, SW NE, 40.6 acres
- T5N, R35E, Sec 5, SE NE, 26.8 acres
- T5N, R35E, Sec 5, NE NW, 35.4 acres
- T5N, R35E, Sec 5, SW NW, 9.2 acres
- T5N, R35E, Sec 5, SE NW, 32.8 acres
- T5N, R35E, Sec 5, NE SW, 26.0 acres
- T5N, R35E, Sec 5, NW SW, 12.3 acres
- T5N, R35E, Sec 5, SW SW, 1.3 acres
- T5N, R35E, Sec 5, SE SW, 20.1 acres
- T5N, R35E, Sec 5, NE SE, 36.8 acres
- T5N, R35E, Sec 5, NW SE, 31.4 acres
- T5N, R35E, Sec 5, SW SE, 29.3 acres
- T5N, R35E, Sec 5, SE SE, 31.4 acres
- T5N, R35E, Sec 8, NE NE, 32.4 acres
- T5N, R35E, Sec 8, NW NE, 25.5 acres
- T5N, R35E, Sec 8, SW NE, 33.0 acres
- T5N, R35E, Sec 8, SE NE, 16.5 acres
- T5N, R35E, Sec 8, NE NW, 31.1 acres
- T5N, R35E, Sec 8, SE NW, 31.3 acres
- T5N, R35E, Sec 8, NE SW, 23.9 acres
- T5N, R35E, Sec 8, NW SW, 4.2 acres
- T5N, R35E, Sec 8, SW SW, 2.3 acres
- T5N, R35E, Sec 8, SE SW, 31.2 acres
- T5N, R35E, Sec 8, NE SE, 13.5 acres
- T5N, R35E, Sec 8, NW SE, 25.7 acres
- T5N, R35E, Sec 8, SW SE, 37.0 acres
- T5N, R35E, Sec 8, SE SE, 36.9 acres
- T5N, R35E, Sec 9, NE NE, 26.8 acres
- T5N, R35E, Sec 9, NW NE, 1.5 acres
- T5N, R35E, Sec 9, SE NE, 9.6 acres
- T5N, R35E, Sec 9, NE NW, 26.2 acres
- T5N, R35E, Sec 9, NW NW, 19.6 acres
- T5N, R35E, Sec 9, SW NW, 20.1 acres
- T5N, R35E, Sec 9, SE NW, 7.9 acres
- T5N, R35E, Sec 9, NW SW, 10.7 acres
- T5N, R35E, Sec 9, SW SW, 2.9 acres
- T5N, R35E, Sec 10, NE NE, 12.8 acres
- T5N, R35E, Sec 10, NW NE, 34.0 acres
- T5N, R35E, Sec 10, SE NE, 18.3 acres
- T5N, R35E, Sec 10, NE NW, 22.9 acres
- T5N, R35E, Sec 10, NW NW, 29.2 acres
- T5N, R35E, Sec 10, SW NW, 32.0 acres
- T5N, R35E, Sec 10, SE NW, 30.3 acres
- T5N, R35E, Sec 17, NE NE, 1.4 acre
- T5N, R35E, Sec 17, NW NE, 2.1 acres
- T5N, R35E, Sec 17, NE NW, 0.9 acres
- T6N, R35E, Sec 31, SE SE, 15.9 acres
- T6N, R35E, Sec 32, SW SW, 15.5 acres
- T6N, R35E, Sec 32, SE SW, 8.0 acres



The purpose of this map is to identify the location of a water right. It is not intended to provide information regarding the location of property ownership lines.

FOUNTAINHEAD
1204 Alvarado Terrace
Walla Walla, WA 99362
(509) 529-2646 phone

Certified Water Right Examiner
358
John S. Warinner
May 18, 1993
STATE OF OREGON

CLAIM OF BENEFICIAL USE MAP
Application G-16322
Permit G-15883
Permit Amendment T-10777
in the name of
SEVEN HILLS PROPERTIES, LLC
Revised: 24 MAY 2010