

CLAIM OF BENEFICIAL USE

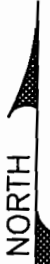
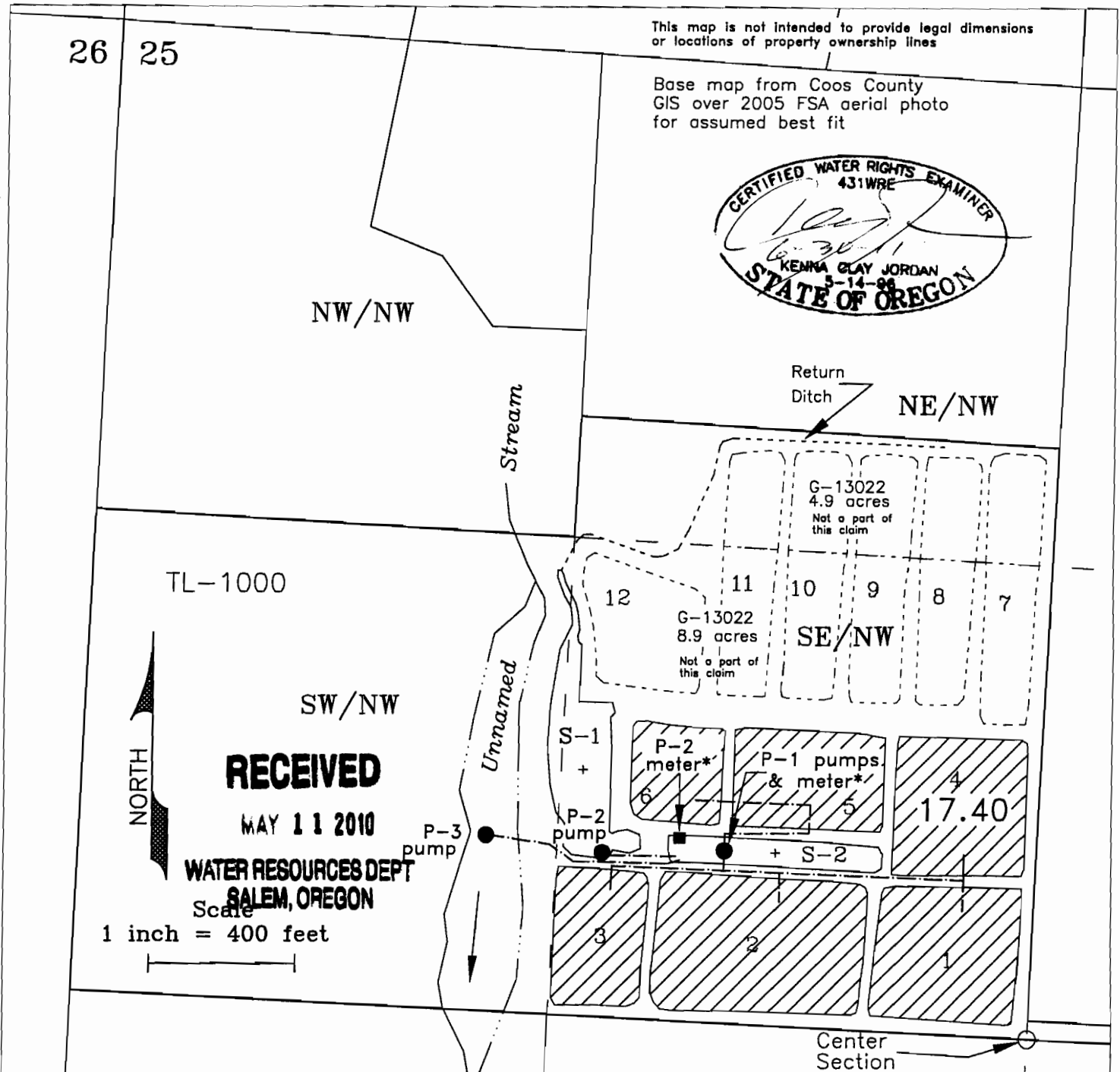
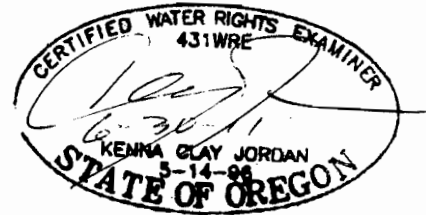
APPLICATION G-10112
APPLICATION S-61176

PERMIT G-9684
PERMIT S-46674

IN THE NAME OF RONALD D. & MARY ANNE PUHL TRUST
TOWNSHIP 29 SOUTH, RANGE 15 WEST, W.M.
COOS COUNTY OREGON

This map is not intended to provide legal dimensions or locations of property ownership lines

Base map from Coos County GIS over 2005 FSA aerial photo for assumed best fit



RECEIVED

MAY 11 2010

WATER RESOURCES DEPT
SALEM, OREGON

Scale
1 inch = 400 feet

POINTS OF DIVERSION/APPROPRIATION (All from the Center of Section 25)

* Coos-Curry Electric Power Meters

- P-1, SE/NW, 475 ft. N & 855 ft. West (Sump S-2) delivers water to bogs from Sump S-1, Sump S-2 and Unnamed Stream
- P-2, SE/NW, 450 ft. N & 1190 ft. West (Sump S-1) delivers water to Sump S-2 for distribution to bogs from pumps at P-1
- P-3, SW/NW, 480 ft. N & 1510 ft. West (Unnamed Stream) delivers water to Sump S-2 for distribution to bogs from pumps at P-1

- Permit G-9684 - Primary Cranberry Operations, Sumps S-1 & S-2 (17.4 ac.)
- Permit S-46674 - Supplemental Cranberry Operations, Unnamed Stream (17.4 ac.)

Mapped from field inspection April 15, 2010

JORDAN ENGINEERING
460 JORDAN LANE
ROSEBURG, OR 97471
(541) 673-1931

Revised
5/5/2010 n.e.d.