

# CLAIM OF BENEFICIAL USE

APPLICATION G-10112

PERMIT G-9684

APPLICATION S-61176

PERMIT S-46674

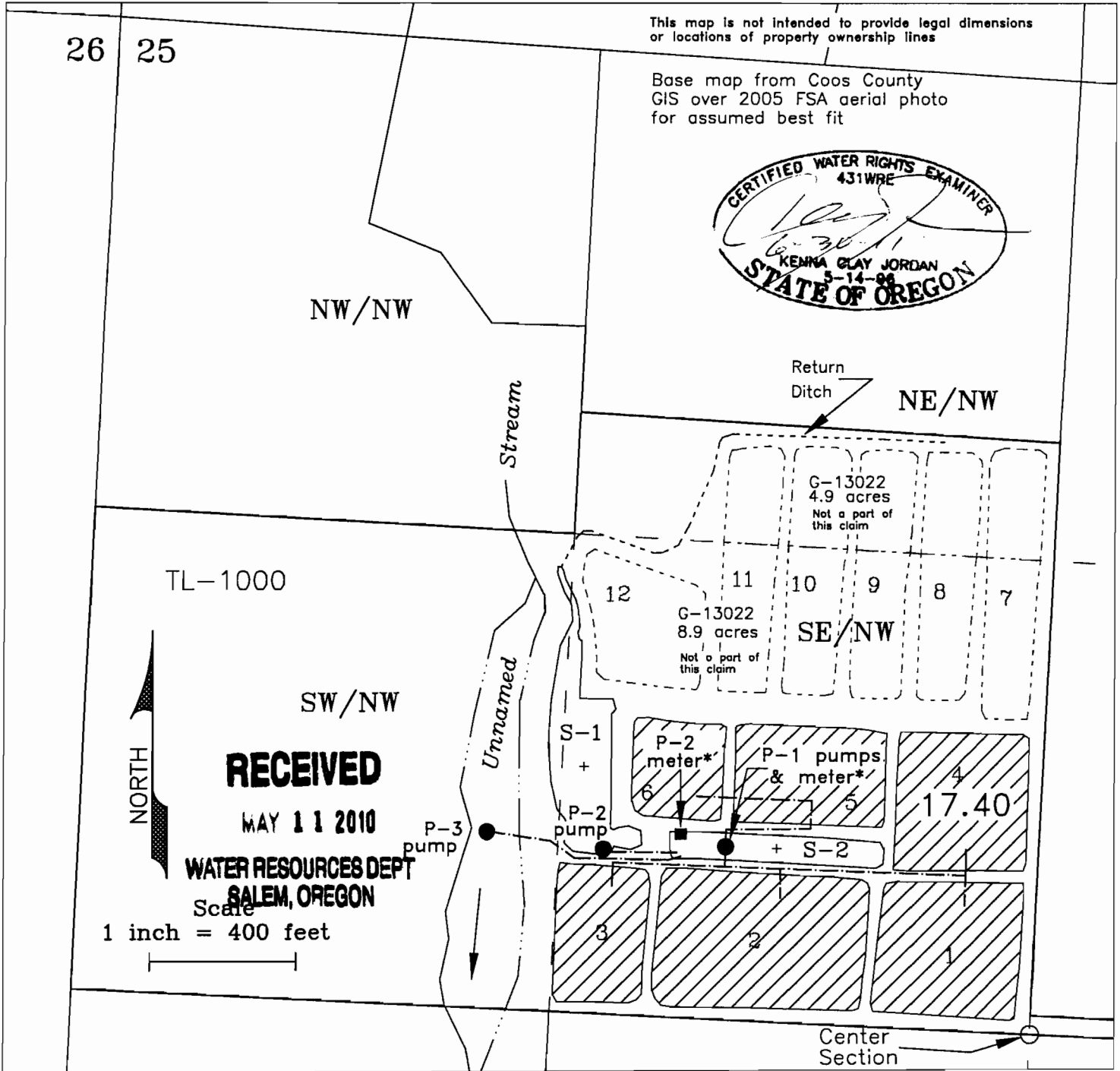
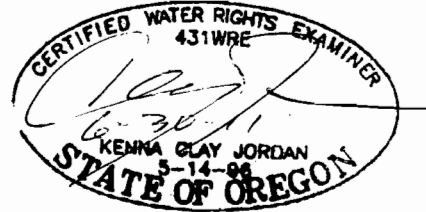
IN THE NAME OF RONALD D. & MARY ANNE PUHL TRUST

TOWNSHIP 29 SOUTH, RANGE 15 WEST, W.M.

COOS COUNTY OREGON

This map is not intended to provide legal dimensions  
or locations of property ownership lines

Base map from Coos County  
GIS over 2005 FSA aerial photo  
for assumed best fit



**RECEIVED**  
 MAY 11 2010  
 WATER RESOURCES DEPT  
 SALEM, OREGON  
 Scale  
 1 inch = 400 feet

POINTS OF DIVERSION/APPROPRIATION (All from the Center of Section 25)

\* Coos-Curry Electric Power Meters

- P-1, SE/NW, 475 ft. N & 855 ft. West (Sump S-2) delivers water to bogs from Sump S-1, Sump S-2 and Unnamed Stream
- P-2, SE/NW, 450 ft. N & 1190 ft. West (Sump S-1) delivers water to Sump S-2 for distribution to bogs from pumps at P-1
- P-3, SW/NW, 480 ft. N & 1510 ft. West (Unnamed Stream) delivers water to Sump S-2 for distribution to bogs from pumps at P-1



Permit G-9684 - Primary Cranberry Operations, Sumps S-1 & S-2 (17.4 ac.)  
 Permit S-46674 - Supplemental Cranberry Operations, Unnamed Stream (17.4 ac.)

Mapped from field  
inspection April 15, 2010

JORDAN ENGINEERING  
 460 JORDAN LANE  
 ROSEBURG, OR 97471  
 (541) 673-1931

Revised  
 5/6/2010 n.e.d.