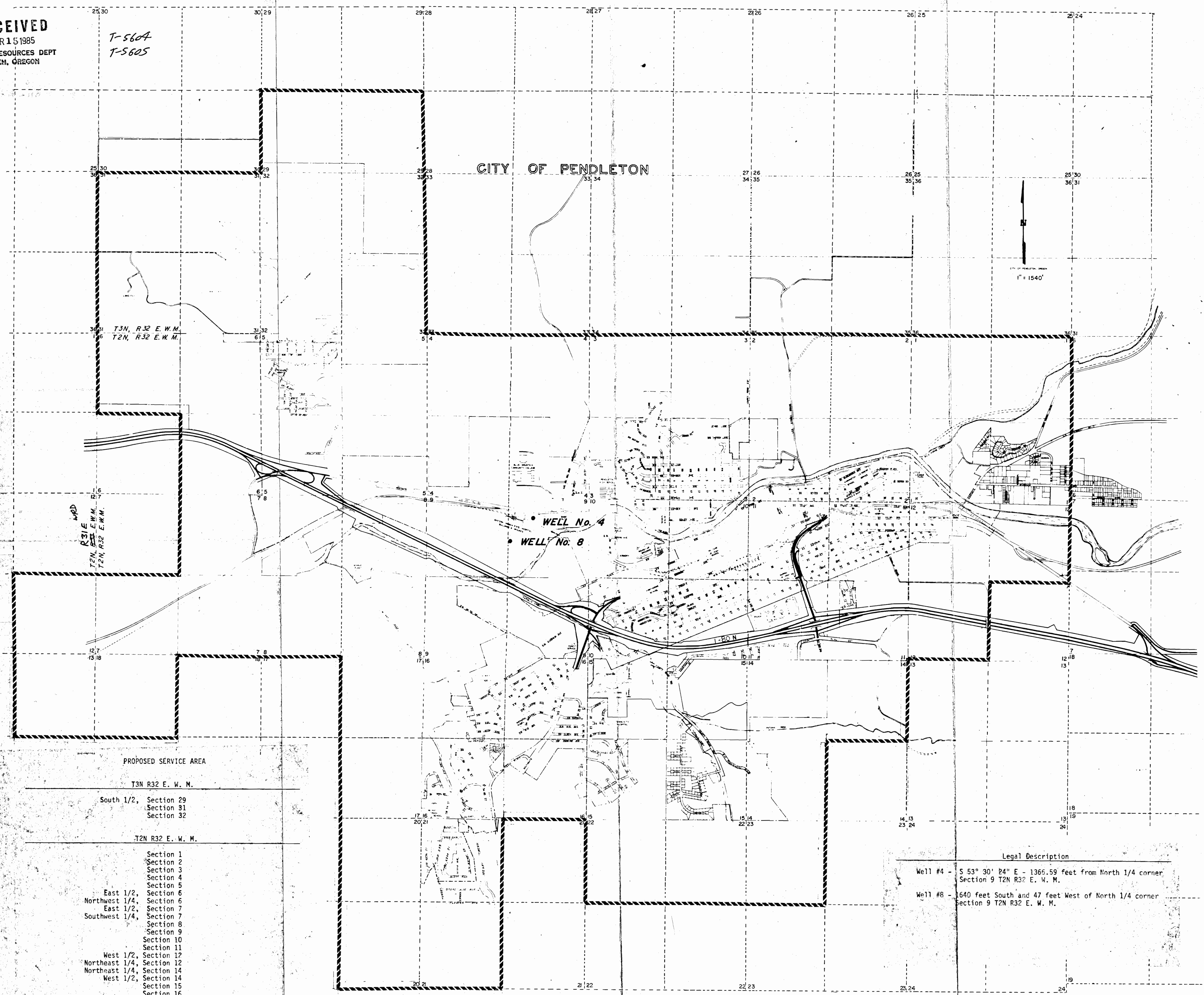
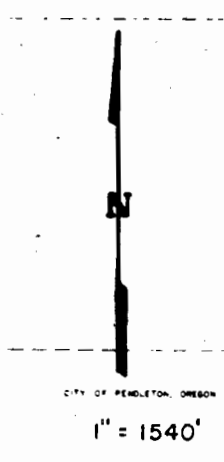


RECEIVED
 MAR 15 1985
 WATER RESOURCES DEPT
 SALEM, OREGON

T-5604
 T-5605

CITY OF PENDLETON



PROPOSED SERVICE AREA

T3N R32 E. W. M.

South 1/2, Section 29
 Section 31
 Section 32

T2N R32 E. W. M.

Section 1
 Section 2
 Section 3
 Section 4
 Section 5
 East 1/2, Section 6
 Northwest 1/4, Section 6
 East 1/2, Section 7
 Southwest 1/4, Section 7
 Section 8
 Section 9
 Section 10
 Section 11
 West 1/2, Section 12
 Northeast 1/4, Section 12
 Northeast 1/4, Section 14
 West 1/2, Section 14
 Section 15
 Section 16
 East 1/2, Section 17
 Northwest 1/4, Section 18
 East 1/2, Section 20
 West 1/2, Section 21
 North 1/2, Section 22
 Northwest 1/4, Section 23

T2N R33 E. W. M.

Southeast 1/4, Section 12
 Northeast 1/4, Section 13

Legal Description

Well #4 - S 53° 30' 24" E - 1366.59 feet from North 1/4 corner
 Section 9 T2N R32 E. W. M.
 Well #8 - 640 feet South and 47 feet West of North 1/4 corner
 Section 9 T2N R32 E. W. M.