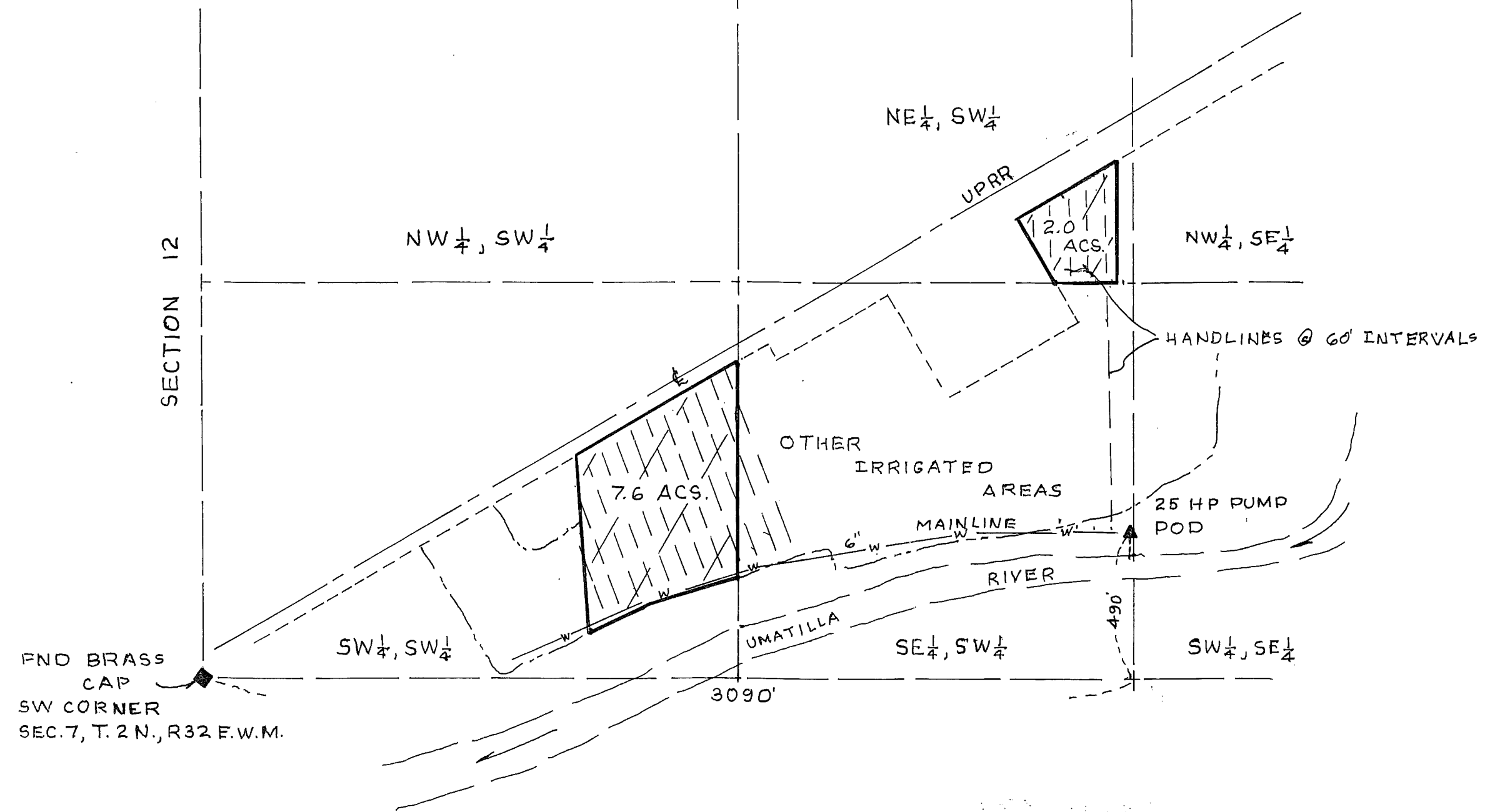


0523

SECTION 12



FND BRASS
CAP
SW CORNER
SEC. 7, T. 2 N., R32 E.W.M.

KRUMBEIN ENGINEERING LTD. ENGINEERS - SURVEYORS - PLANNERS 361 S.E. Second Pendleton, Oregon	Scale 1"=400'	Drn. By D+K	Drng. No. 0537A	Revision 1 7-28-01
	Date 8-10-05	Ckd. By	Job No. 9428	Revision 2
FINAL PROOF SURVEY CONRAD L. WYSS SW 1/4, SECTION 7 T. 2 N., R. 32 E.W.M. UMATILLA COUNTY, OR.				T - 7293
		RENEWS 6/30/07		

GOBU MAP # 0523

folder "T"