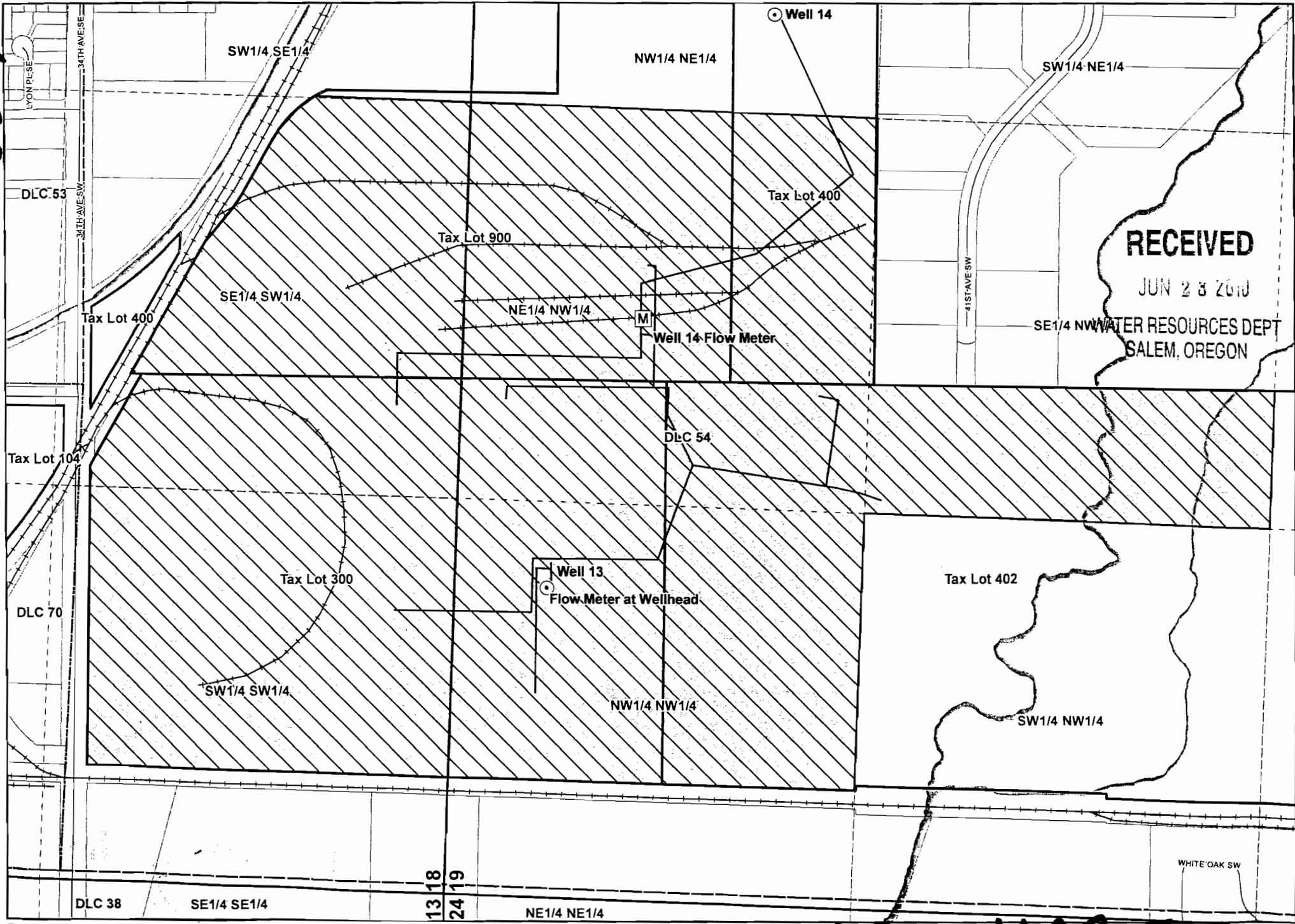


0517

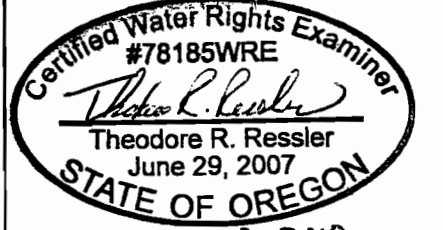


Claim of Beneficial Use Map
 Permit G-13648, Application G-14859
 Township 11 South, Range 3 West (W.M.)

- LEGEND**
- Point of Appropriation (POA)
 - Place of Use (POU)
 - Water Conveyance System
 - DLCs
 - Taxlots (Allvac)
 - Taxlots
 - Roads
 - Railroads
 - ☪ Waterbodies

POA LEGAL DESCRIPTION
Well 13:
 Located 295 feet South and 1,015 feet East from the NW corner of Section 19, Township 11 South, Range 3 West (W.M.)
Well 14:
 Located 2,275 feet South and 1,240 feet East from the SE corner of Hutchins DLC 70, Section 19, Township 11 South, Range 3 West (W.M.)

Map Information
 Projection: Oregon State Plane North Zone
 Datum: North American Datum of 1983
 Date: January 22, 2010
 Prepared By: GSI Water Solutions, Inc.
Data Sources
 City of Albany GIS, Linn County GIS, Oregon Geospatial Data Clearinghouse
Disclaimer
 This map was prepared for the purpose of identifying the location of a water right only and it is not intended to provide legal dimensions or location of property ownership lines.



EXPIRES: 12-31-2010
 0 150 300 450 600
 1 inch equals 400 feet



COBU MAP # 0517