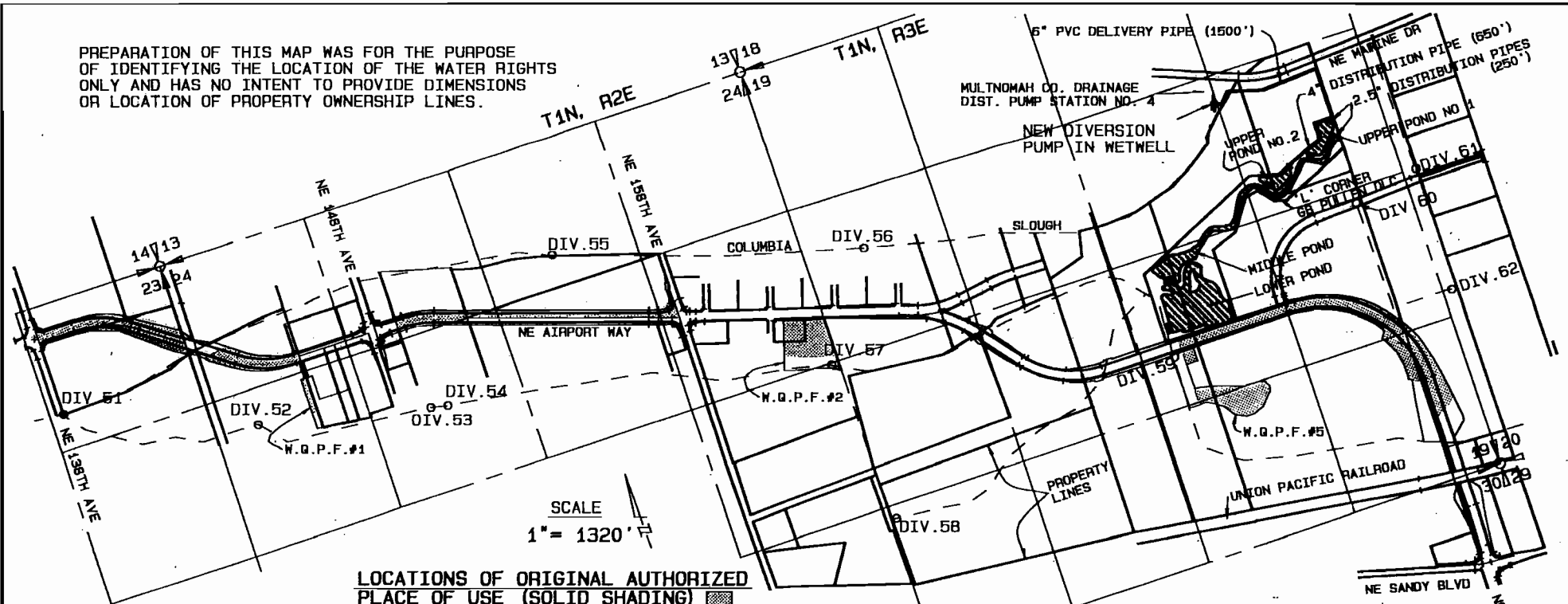


PREPARATION OF THIS MAP WAS FOR THE PURPOSE OF IDENTIFYING THE LOCATION OF THE WATER RIGHTS ONLY AND HAS NO INTENT TO PROVIDE DIMENSIONS OR LOCATION OF PROPERTY OWNERSHIP LINES.



SCALE
1" = 1320'

LOCATIONS OF ORIGINAL AUTHORIZED PLACE OF USE (SOLID SHADING)

NE 1/4 OF NE 1/4 OF SEC. 23	4.77 ACRES
NW 1/4 OF NW 1/4 OF SEC. 24	2.65 "
NE 1/4 OF NW 1/4 OF SEC. 24	1.85 "
SW 1/4 OF NW 1/4 OF SEC. 24	0.31 "
SE 1/4 OF NW 1/4 OF SEC. 24	0.44 "
SW 1/4 OF NE 1/4 OF SEC. 24	2.09 "
SE 1/4 OF NE 1/4 OF SEC. 24	3.41 "

T1N, R2E, WM.
MULTNOMAH COUNTY, OREGON

SW 1/4 OF NW 1/4 OF SEC. 19	0.34 "
NW 1/4 OF SE 1/4 OF SEC. 19	3.76 "
NE 1/4 OF SE 1/4 OF SEC. 19	3.58 "
SW 1/4 OF SE 1/4 OF SEC. 19	2.19 "
SE 1/4 OF SE 1/4 OF SEC. 19	4.17 "

T1N, R3E, WM.
MULTNOMAH COUNTY, OREGON

TOTAL OF ALL AREAS - 29.56 ACRES

○ ORIGINAL POINTS OF DIVERSION
● NEW POINT OF DIVERSION

LOCATION OF NEW PLACE OF USE (CROSS HATCHED)

UPPER POND NO.1	SE 1/4 OF NE 1/4 OF SEC. 19	0.37 ACRES
UPPER POND NO.2	SE 1/4 OF NE 1/4 OF SEC. 19	0.23 "
MIDDLE POND	SE 1/4 OF NE 1/4 OF SEC. 19	0.50 "
"	SW 1/4 OF NE 1/4 OF SEC. 19	0.40 "
"	NW 1/4 OF SE 1/4 OF SEC. 19	1.10 "
LOWER POND	NW 1/4 OF SE 1/4 OF SEC. 19	3.37 "

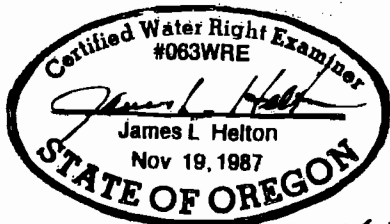
T1N, R3E, WM.
MULTNOMAH COUNTY, OREGON

TOTAL OF ALL AREAS - 5.97 ACRES

LOCATION OF NEW POINT OF DIVERSION

890' NORTH & 260' WEST OF "L" CORNER OF 68 PULLEN OLC (WLY SW COR)

WRD 7-16-2010



EXPIRES 6-30-97

SURVEYED: NOV. 17, 1995

PROJECT NO. 7651

FINAL PROOF MAP FOR TRANSFER 6817 IN THE NAME OF:

CITY OF PORTLAND, OFFICE OF TRANSPORTATION N.E. AIRPORT WAY WETLAND MITIGATION

EXHIBIT

A