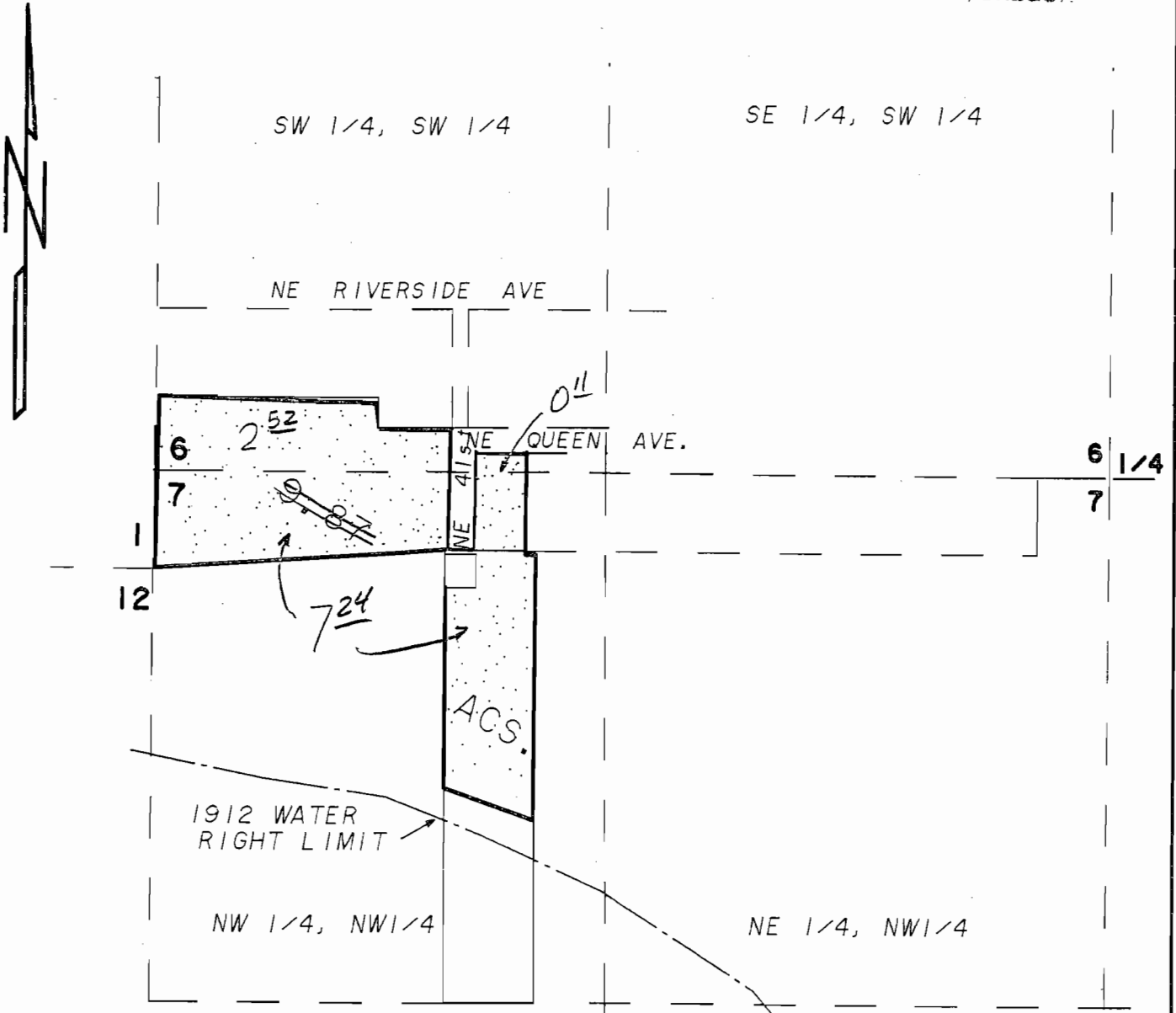


RECEIVED

JUL 18 1996

WATER RESOURCES DEPT.
SALEM, OREGON



POD, S 31° 46' 55" E +
1367.8' FROM NE S. 12

WRD 8-12-10 JWG

K KRUMBEIN ENGINEERING LTD.
ENGINEERS - SURVEYORS - PLANNERS
361 S.E. Second Pendleton, Oregon

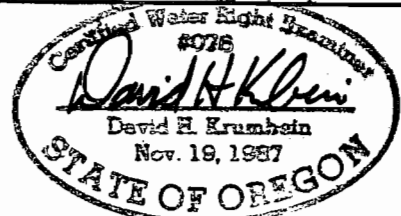
Scale
1" = 400'
Date
7-16-96

Drn. By
DHK
Ckd. By

Drng. No.
9621A
Job No.
945

Revision 1
Revision 2

FINAL PROOF SURVEY
LEONARD T-7116
SW 1/4, SW 1/4, SEC. 6 & NW 1/4, NW 1/4, SEC. 7
T. 2 N., R. 33 E. W.M., UMATILLA COUNTY



RENEWS

6/30/97