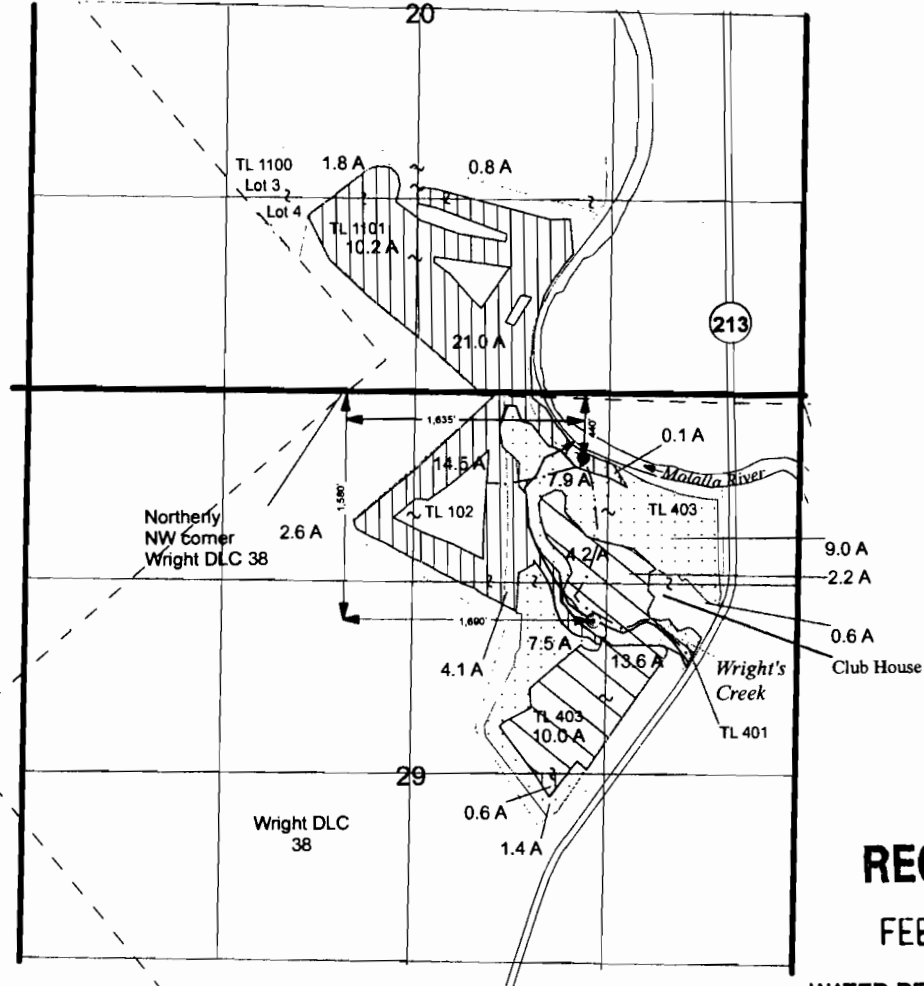


TRANSFER APPLICATION MAP HISTORIC POD CHANGE Certificates 20444, 34110, 36264 T4S, R2E, Section 20 & 29, WM Clackamas County, Oregon



RECEIVED

FEB 09 2010

WATER RESOURCES DEPT
SALEM, OREGON

T 11016

- € From POD for Certificates 20444, 34110, 36264
- To POD-Historic POD change for Certificates 20444, 34110, 36264
- Mainline

- Certificate 36264 Lands
Old POD 1,580' S, 1,690' W, Northerly NW Corner Wright DLC 38 Sec 29
55.7 acres primary
- Certificate 34110 Lands
Old POD 1,620' S, 1360' W NE Corner 29
26.4 acres primary
- Certificate 20444 Lands
Old POD SE ¼ NE ¼ Sec 29
30.0 acres primary

THIS MAP IS NOT INTENDED TO PROVIDE LEGAL DIMENSIONS OR LOCATIONS OF PROPERTY OWNERSHIP LINES.

December 7, 2009

EnviroLogic Resources, Inc.
ENVIRONMENTAL & WATER RESOURCES CONSULTANTS

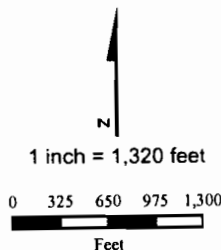


FIGURE 1

Arrowhead Golf Club