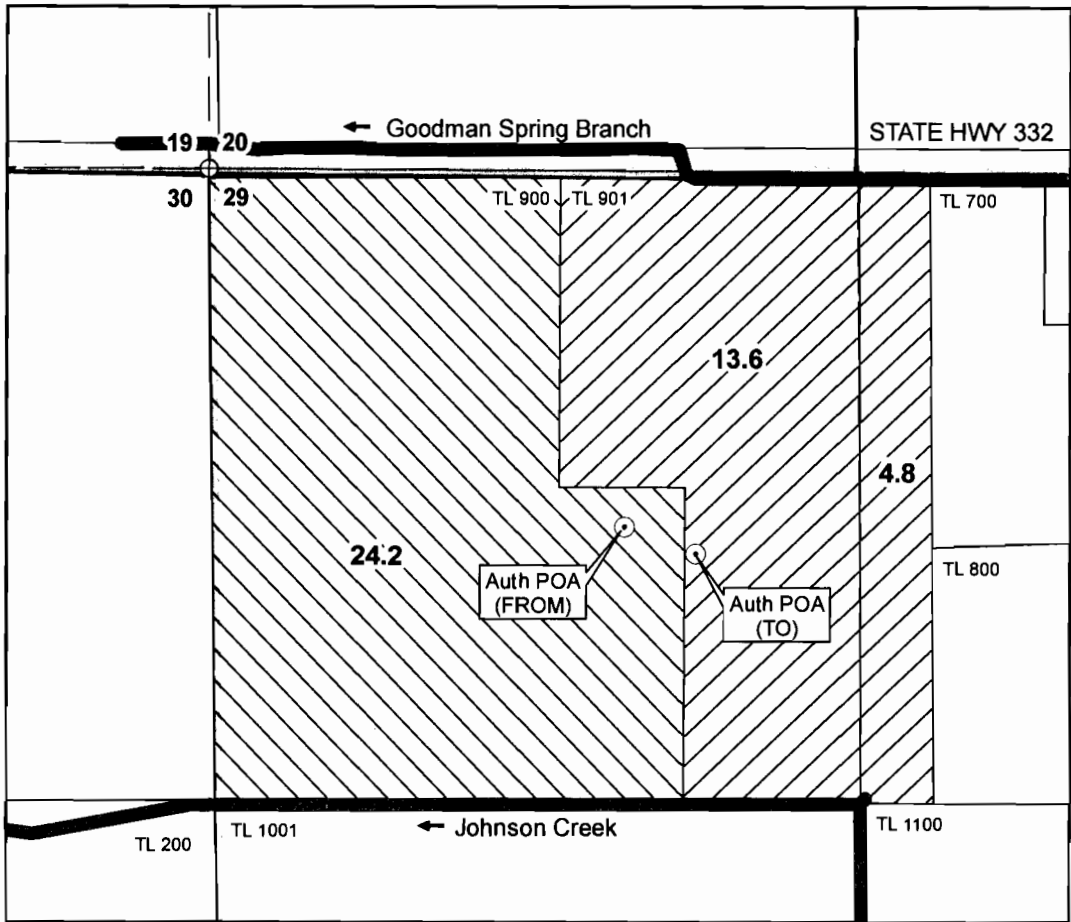





**T6N, R35E, WM  
NW/4 NW/4 of Sec 29  
Umatilla County**

1 inch = 400 feet



- ⊙ **Point of Appropriation (FROM)**  
Groundwater well (gravel) located in the NW/4, NW/4, Section 29, 725 feet S and 825 feet E from NW Corner of Section 29. Well Log UMAT 4808.
- ⊙ **Point of Appropriation (TO)**  
Groundwater well (gravel) located in the NW/4, NW/4, Section 29, 780 feet S and 1025 feet E from NW Corner of Section 29. Well Log UMAT 5092.

 **Place of Use (AFFECTED)**  
18.4 acres in Tax Lot 901, including:  
4.8 acres in NE NW of Section 29  
13.6 acres in NW NW of Section 29

 **Place of Use (NOT AFFECTED)**  
24.2 acres in Tax Lot 900 in NW NW Section 29

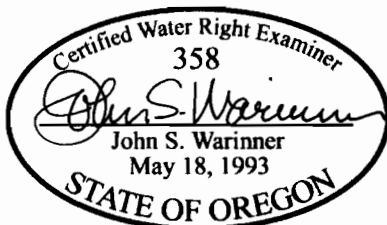
**RECEIVED**

MAR 18 2010

WATER RESOURCES DEPT  
SALEM, OREGON

T 11034

The purpose of this map is to identify the location of a water right. It is not intended to provide information regarding the location of property ownership boundary lines.



FOUNTAINHEAD  
1204 Alvarado Terrace  
Walla Walla, WA 99362  
509.529.2646 phone

**TRANSFER MAP  
Certificate 26521**

in the name of  
VERGIE BROADFOOT

Revised 03 FEB 2010