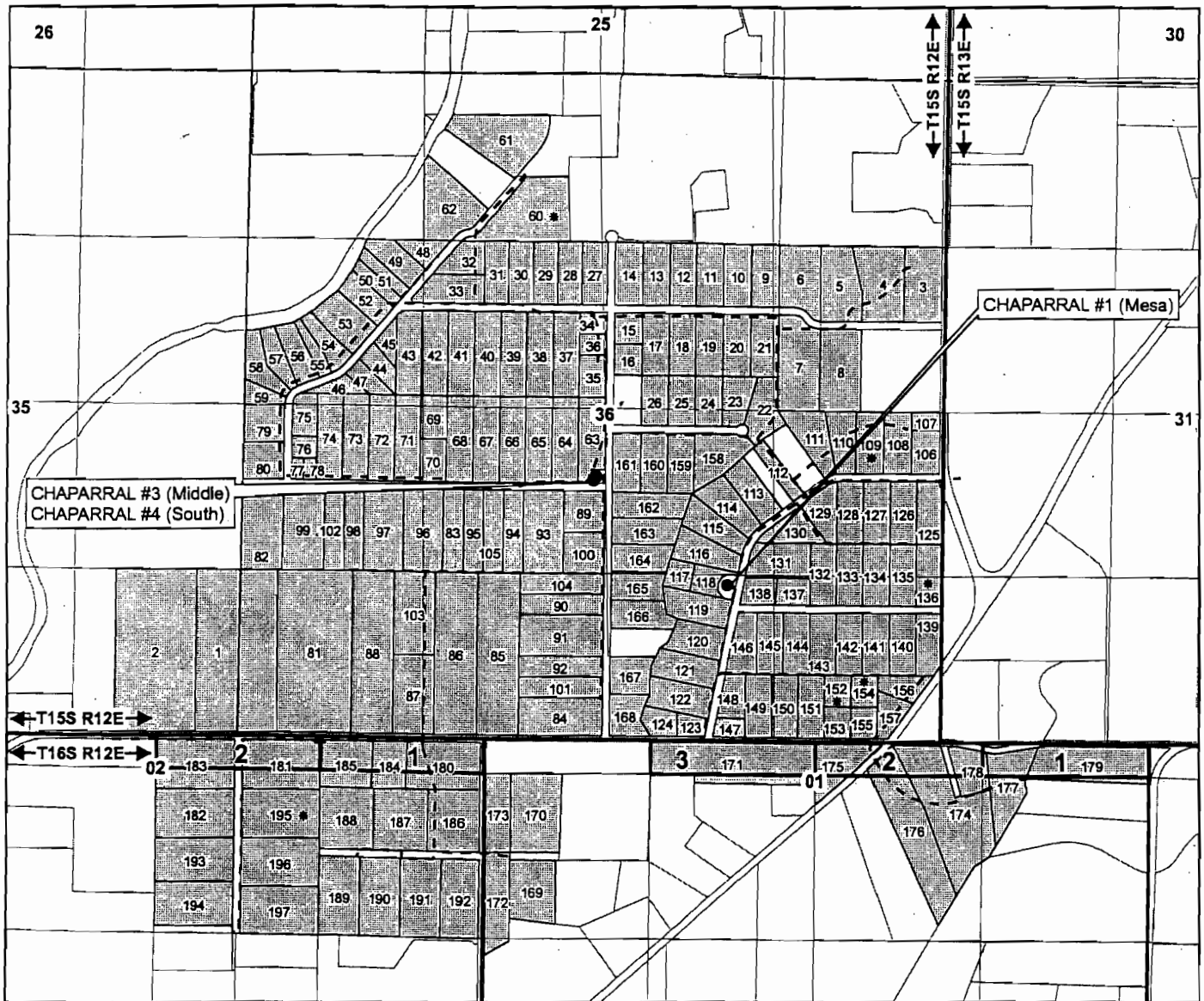


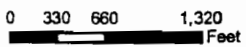


AVION WATER CO, INC.

POINTS OF APPROPRIATION AND PLACE OF USE
DESCHUTES COUNTY
PERMIT G-10019; T-10828
APPLICATION G-10466



1 inch = 1,320 feet



DRAWN BY: TANNER LEMMON
AVION WATER GIS DEPARTMENT
OCTOBER, 2010

DISCLAIMER:
This map was prepared for the purpose of identifying the location of water rights only and is not intended to provide legal dimensions or locations of property ownership lines.

- Points of Appropriation
- Mainline (2"-8")
- * Indicates that these lots have two houses served with separate service connections.
- Government Lots
- ▨ Permitted Lots (197)

WELL DESCRIPTIONS

CHAPARRAL WELL #1 (Mesa)-
SW 1/4, SE 1/4 of
Section 36, T 15 S, R 12 E,
WM - 1230' North and 955'
East from the S 1/4 corner of
Section 36
151236D001202

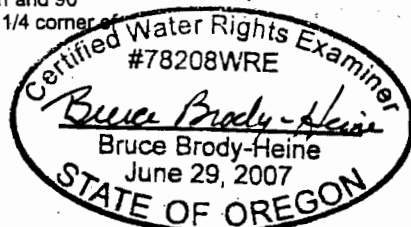
CHAPARRAL WELL #4 (South)-
NE 1/4, SW 1/4 of
Section 36, T 15 S, R 12 E,
WM - 2072' North and 90'
West from the S 1/4 corner of
Section 36
151236C000101

CHAPARRAL WELL #3 (Middle) -
NE 1/4, SW 1/4 of
Section 36, T 15 S, R 12 E,
WM - 2089' North and 78'
West from the S 1/4 corner of
Section 36
151236C000101

NOTES

Measuring devices:
Temporary meter hook-up in a service box between well head and reservoir adjacent to pump house for Wells 3 & 4.
Hour clock in pump house on site.
Permanent 2" totalizing meter in a service box between the well head and the reservoir for Well #1.
Hour clock in pump house on site.

Base Layer:
Deschutes County Taxlot Shapefile
Projected Coordinate System :
NAD 1983 StatePlane Oregon South
Geographic Coordinate System :
GCS North American 1983



EXPIRES: 12/31/2011