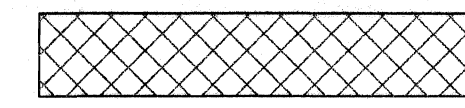
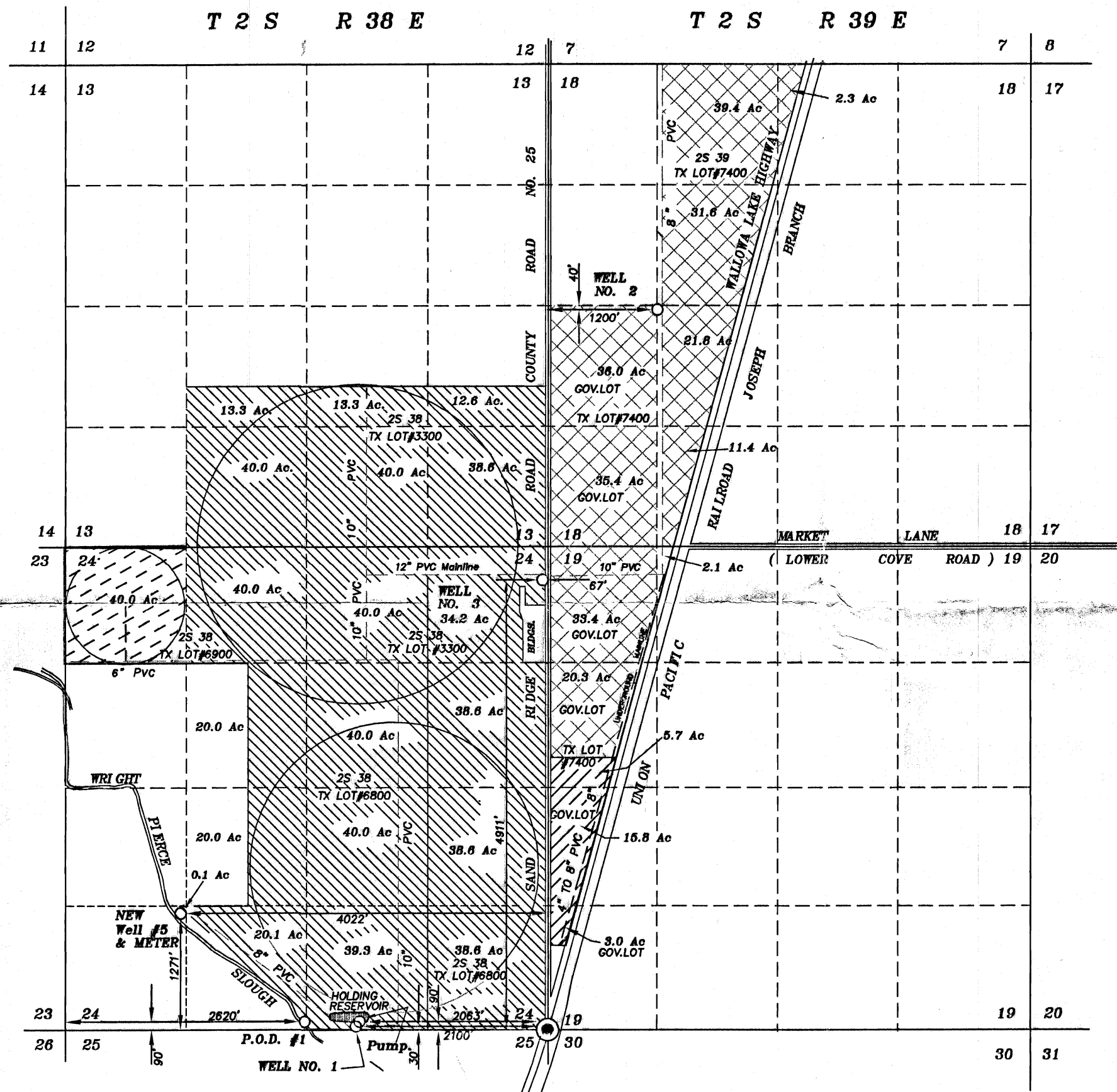
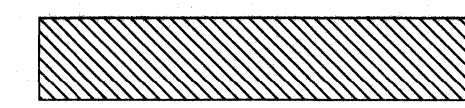




SCALE 1" = 1320'



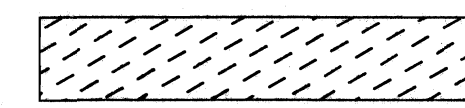
Lands with Primary rights from well #2 Certificate #41268 and supplemental rights from well No. 3 (G-12420), and supplemental rights from new well No. 5.



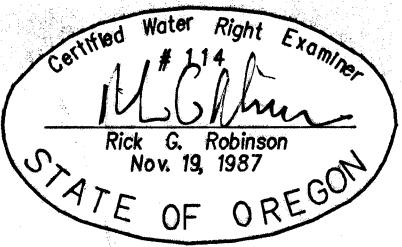
Lands with Primary rights from P.O.D. #1 Certificate #42771 & 42769. Supplemental rights from well No. 1 and well No. 3 Permit (G-12420), as well as supplemental rights from new well No. 5.



Lands with Primary rights from well #3 Permit (G-12420). And supplemental rights from wells #1(Cert.# 42771 & 42769), #2(Cert.# 41268) and new well No. 5.



Lands with Primary rights from well #1 Certificate #42768 and supplemental rights from well #3(Permit #12420), well #2(Cert.# 41268) and new well No. 5.



Note: The preparation of this map was for the purpose of identifying the water right and has no intent to provide dimensions or location of property ownership lines. Location information shown hereon was furnished by the applicant.

FINAL PROOF MAP OF SUPPLEMENTAL WATER RIGHTS FROM NEW WELL #5

FOR JOHN C. CUTHBERT

BY BAGETT - GRIFFITH & BLACKMAN 2006 ADAMS AVENUE LAGRANDE, OREGON 97850

RECEIVED MAY 25 2011 WATER RESOURCES DEPT SALEM, OREGON

June 11, 2010

APPLICATION NO. G-16200 PERMIT NUMBER G-15901