

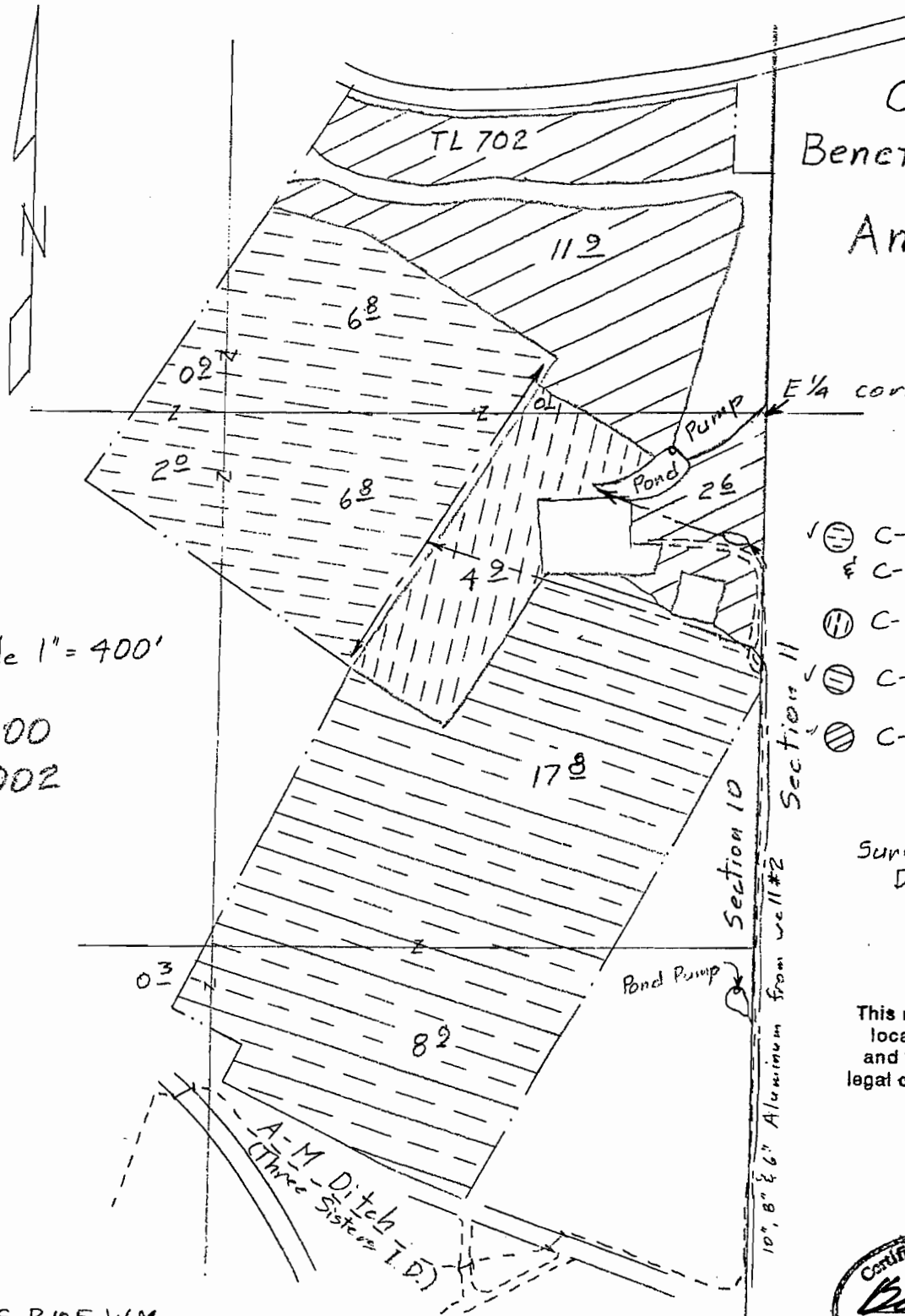
T.15S., R.10E., W.M.

RECEIVED

MAR 23 2007

WATER RESOURCES DIVISION
SALEM, OREGON

Claim of
Beneficial Use Map
for
Amestoy Ranch



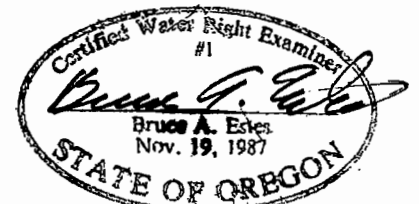
Scale 1" = 400'

T-8900
T-8902

- ✓ ⊖ C-81454 1900 16.5 ac.
 & C-57115 supp. 16.5 ac.
- ⊖ C-74135 1903 5.0 ac.
- ✓ ⊖ C-982 1908 27.0 ac.
- ⊖ C-2056 1912 14.5 ac.

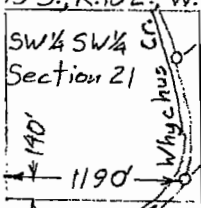
Surveyed Aug 23 &
Dec 29, 2006

This map is for the purpose of
locating a water right only
and has no intent to provide
legal dimensions or the location
of property lines.



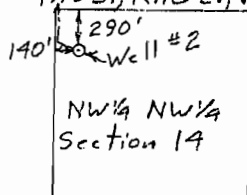
Renewal Dec. 31, 2007

T.15S., R.10E., W.M.



Scale 1" = 1320'

T.15S., R.10E., W.M.



Scale 1" = 1320'

ESTES SURVEYS, LLC

PO Box 17519	60382 Arnold Rd
Salem, OR 97306-7519	Bend, OR 97702
(503) 585-7593	(541) 382-7391

T. 15S, R. 10E, W.M.

Hwy 126

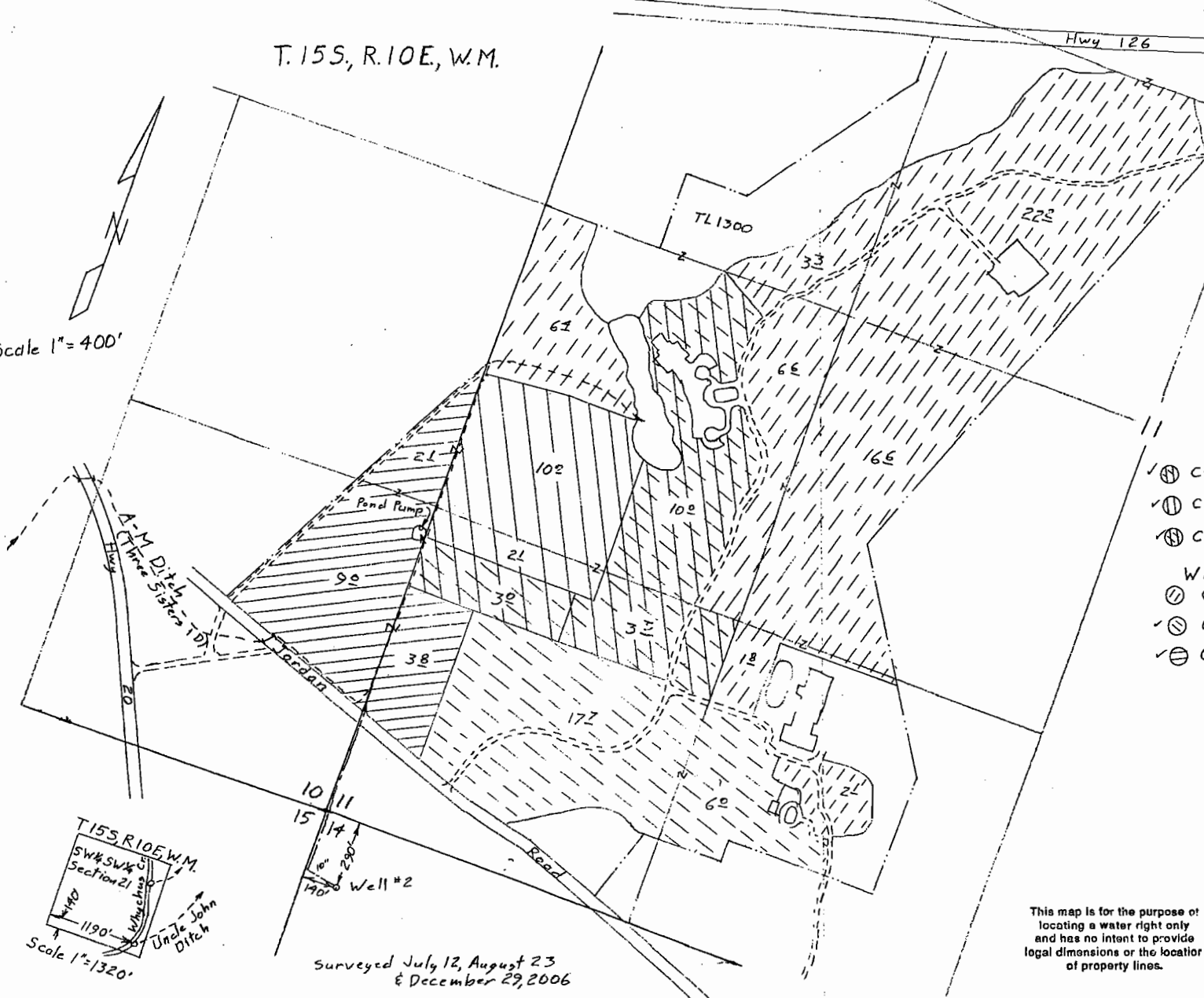
T-8900
T-8902

RECEIVED

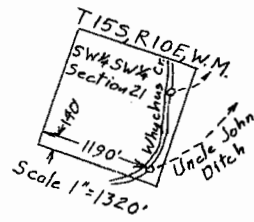
MAR 06 2007
WATER RESOURCES DEPT
SALEM, OREGON

Claim of Beneficial Use
for
R&B RANCH, LLC

Scale 1" = 400'



- Well #2
- ✓ ⊕ C-45033 Supplemental to 1908 13²
 - ✓ ⊕ C-57115 Primary 12¹
 - ✓ ⊕ C-57156 Supplemental to 1908 3⁰
- Whychus Creek (Three Sisters I.D.)
- ✓ ⊕ C-74135 1903 59⁰
 - ✓ ⊕ C-982 1908 40⁰
 - ✓ ⊕ C-2056 1912 14²



Surveyed July 12, August 23
& December 29, 2006



This map is for the purpose of locating a water right only and has no intent to provide legal dimensions or the location of property lines.

ESTES SURVEYS, LLC

PO Box 17519 80382 Arnold Rd
Salem, OR 97306-7519 Bend, OR 97702
(503) 585-7593 (541) 382-7391