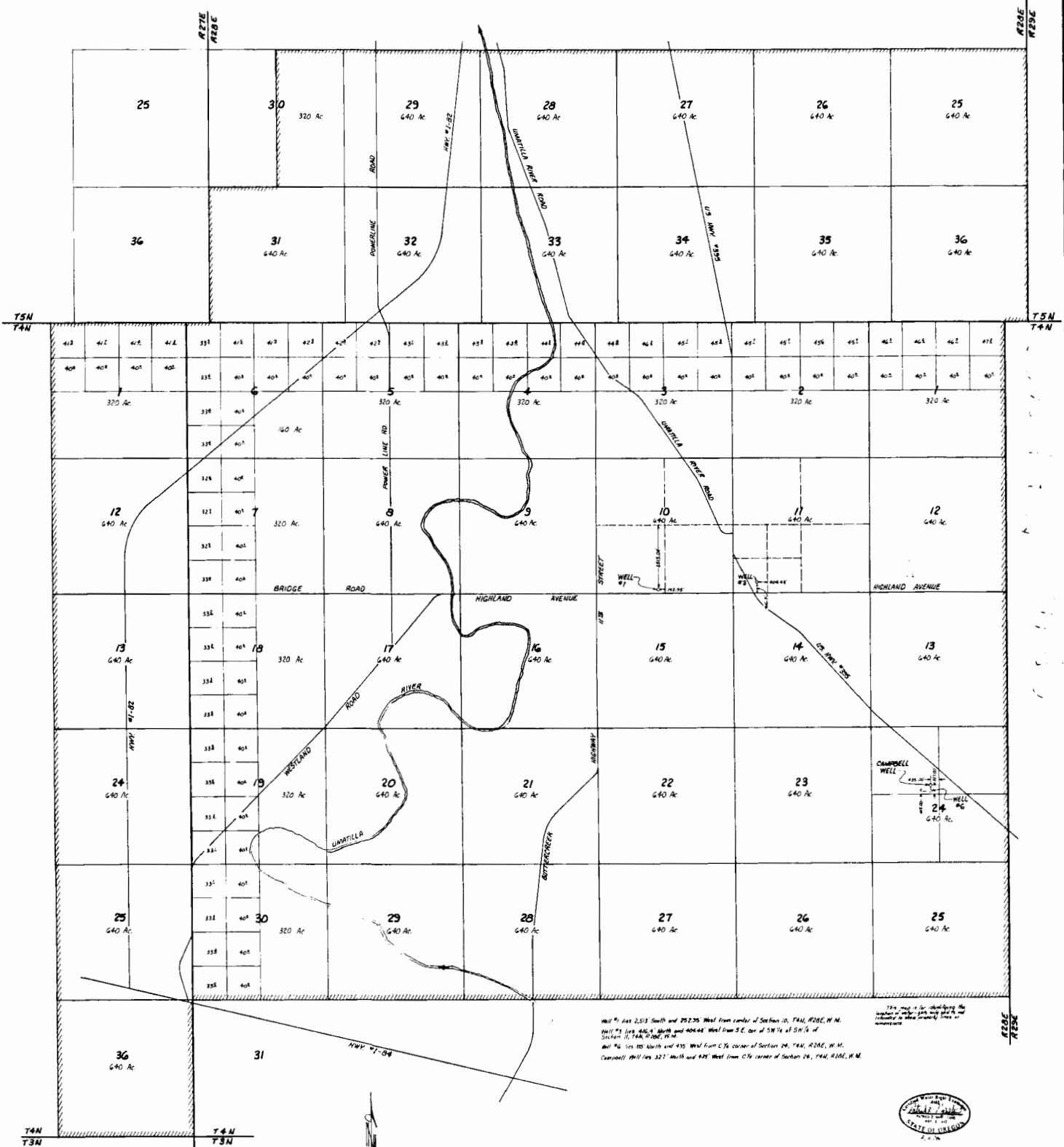


T5N, R26E, W.M., T4N, R26E, W.M., R27E, W.M.,
UMATILLA COUNTY

FINAL PROOF SURVEY

for Transfer No. T-6310 and T-6412

in the name of
City of Merriam
180 W. 2nd Street
Merriam, Ore. 97038
Phone No. 503-567-3521



Well #1: 251' South and 252.75' West from center of Section 10, T4N, R26E, W.M.
Well #2: 100' 40.4" South and 400' 44" West from S.E. cor. of SW 1/4 of Section 11, T4N, R26E, W.M.
Well #3: 100' North and 410' West from C.N. corner of Section 24, T4N, R26E, W.M.
Campbell Well: 321' North and 425' West from C.N. corner of Section 24, T4N, R26E, W.M.

The map is for information only and does not constitute a warranty of accuracy or liability in any way.



CITY OF MERRIAM, 180 W. 2nd Street
Merriam, Oregon 97038
503-567-3335
7/4/95
DRAWN BY: S.A.G.

0028