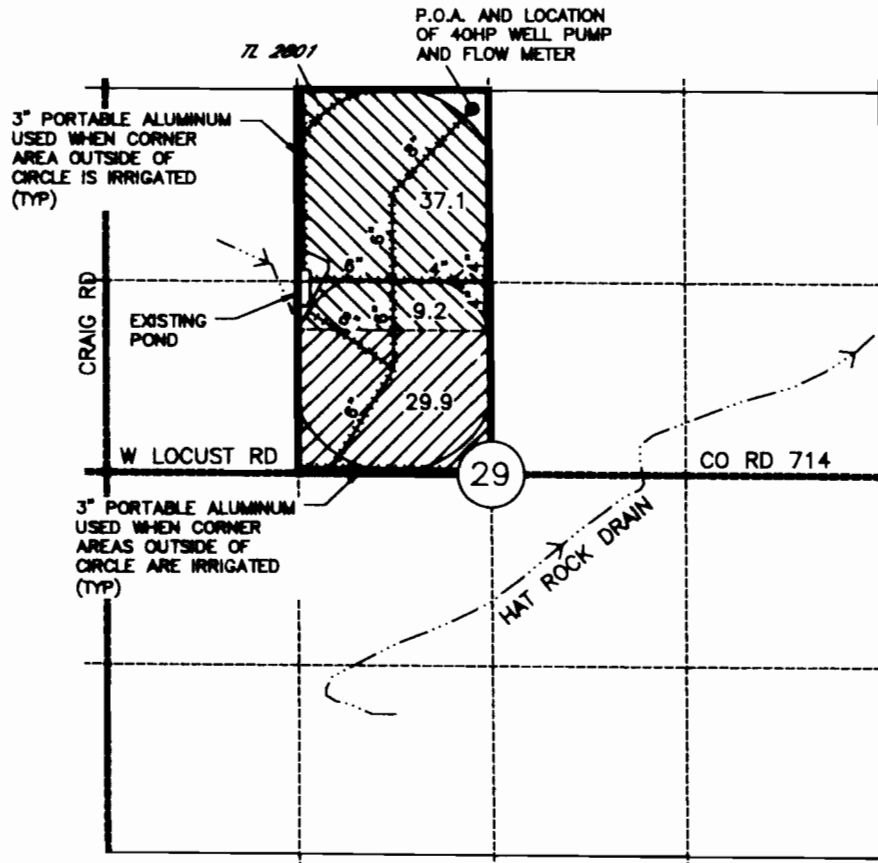
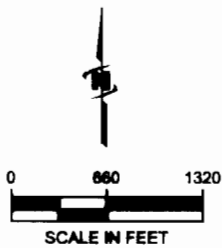




CLAIM OF BENEFICIAL USE MAP
 FOR T-8910
 IN THE NAME OF SCOTT FEWEL
 T5N, R29E W.M., UMATILLA COUNTY



P.O.A.
 WELL LOCATED 130'S AND 100'W FROM THE N ¼
 COR SEC 29



LEGEND

-  PRIMARY IRRIGATION
-  SUPPLEMENTAL IRRIGATION

NOTE:
 THE PURPOSE OF THIS MAP IS TO IDENTIFY THE APPROXIMATE LOCATION OF THE WATER RIGHT. IT IS NOT INTENDED TO PROVIDE INFORMATION RELATIVE TO THE LOCATION OF PROPERTY OWNERSHIP BOUNDARY LINES.



Revised 6/30/12