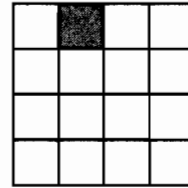


This map is not intended to provide legal dimensions or locations of property ownership lines.



T14S, R13E  
Section 16

POA, submersible 5 hp pump, and  
totalizing flow meter, 235 feet South, 775  
feet West of North ¼ Corner. Section 16

North ¼ Corner



Place of Use

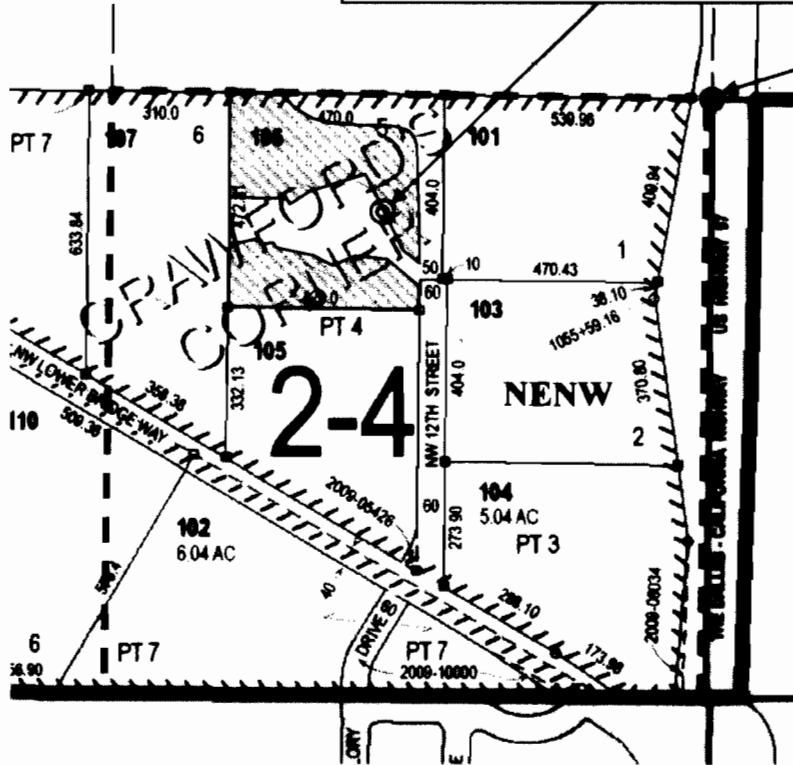


Point of Appropriation (POA)



Corner Marker

T14S, R13E  
Section 16  
NENW - 3.0 acres irrigated

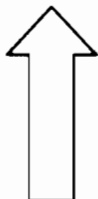


Terry and Ruth Moore CBU Map  
Transfer T-11183

RECEIVED

AUG 04 2011

NORTH



T14S R13E, Section 16, NENW, Tax Lot 106

WATER RESOURCES DEPT  
SALEM, OREGON

Deschutes County, OR - August 1, 2011

Scale 1" = 400'

Water Right Services, LLC

John A. Short  
P.O. Box 1830  
Bend, OR 97709  
541-408-7415  
[johnshort@usa.com](mailto:johnshort@usa.com)

