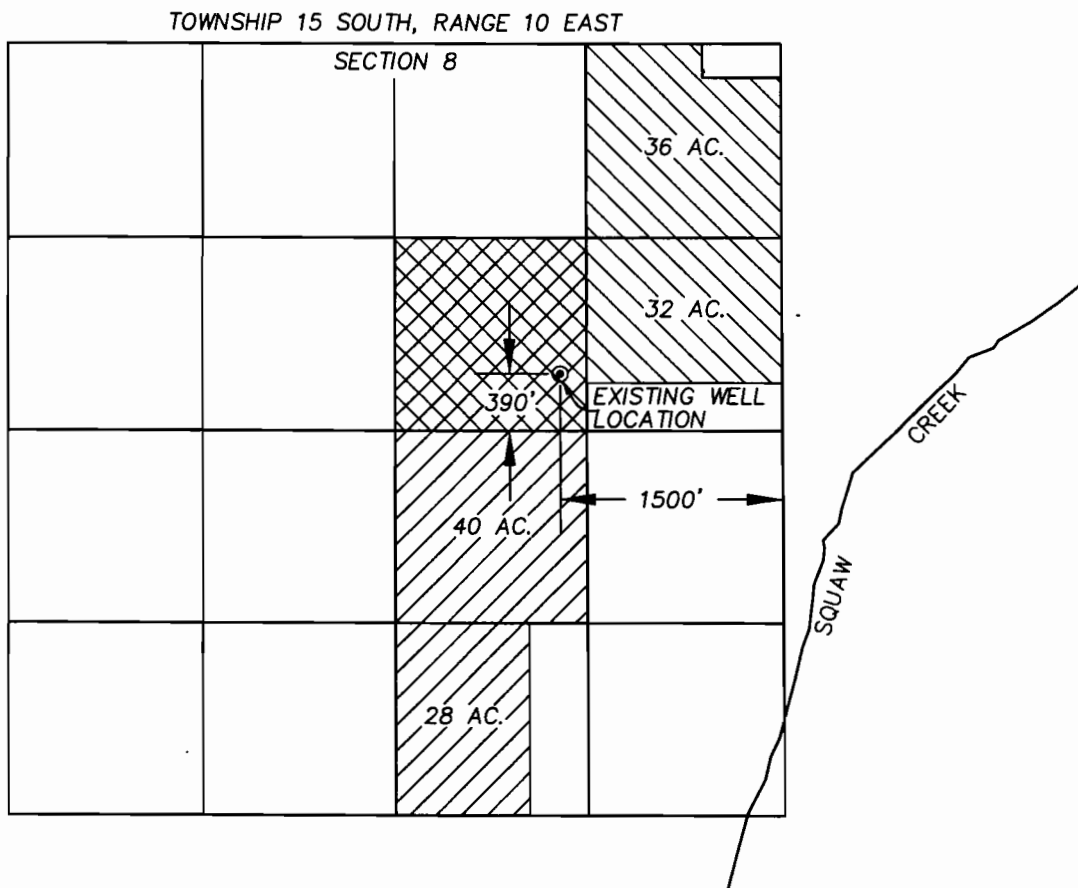


WATER RIGHTS TRANSFER  
 FINAL PROOF SURVEY  
 FOR  
 PINE MEADOW RANCH INC.  
 SECTION 8, TOWNSHIP 15 SOUTH, RANGE 10 EAST

EXHIBIT 'A'



1" = 1320'



NOTE: THIS MAP WAS PREPARED FOR THE PURPOSE OF IDENTIFYING THE LOCATION OF WATER RIGHTS. THIS MAP IS NOT INTENDED TO PROVIDE DIMENSIONS OR THE LOCATION OF PROPERTY OWNERSHIP LINES.

LEGEND:



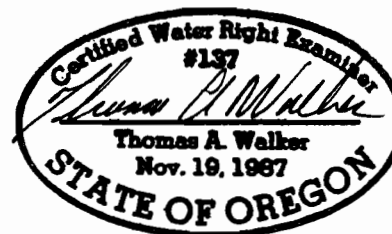
TRANSFER PRIMARY WATER RIGHTS FROM THIS AREA.



TRANSFER 68 ACRES WELL RIGHTS AS SUPPLEMENTAL TO PRIMARY SQUAW CREEK RIGHTS THIS AREA



40 ACRES OF WELL IRRIGATION AREA NOT TRANSFERRED



EXPIRES 6-30-02

RECEIVED

OCT 01 2001

WATER RESOURCES DEPT.  
 SALEM, OREGON