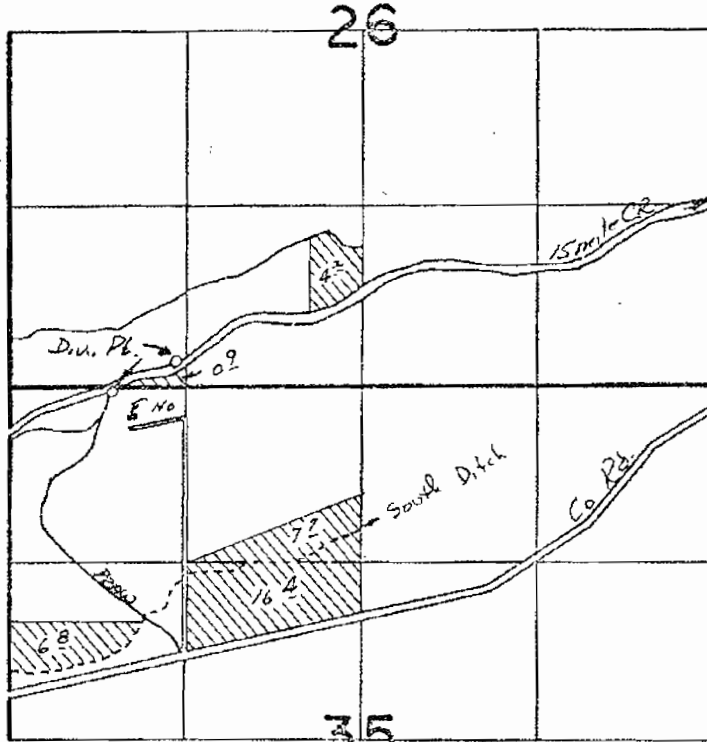


RECEIVED

JUN 14 1977

WATER RESOURCES DEPT
SALEM, OREGON

T. 1 S. R. 13 E. W.M.



Diversion Points Located: 1280' N. & 750' E.; 1470' N. & 1250' E.,
both from the S.W. corner of N.W. 1/4 N.W. 1/4, Section 35

Application Map For

CARLETON RANCH

Scale 4" = 1 Mile

Application No. 56057

Permit No. 42252

THIS MAP PREPARED BY:

Thomas J. R.

FROM INFORMATION FURNISHED BY
THE APPLICANT.