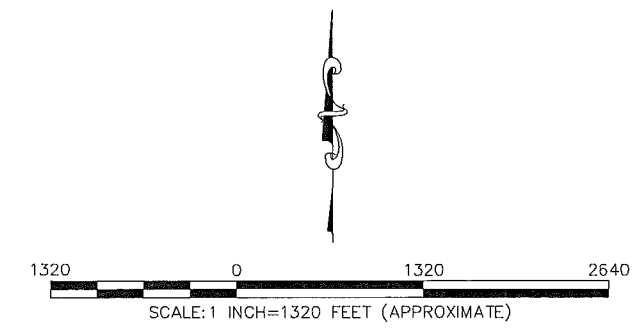
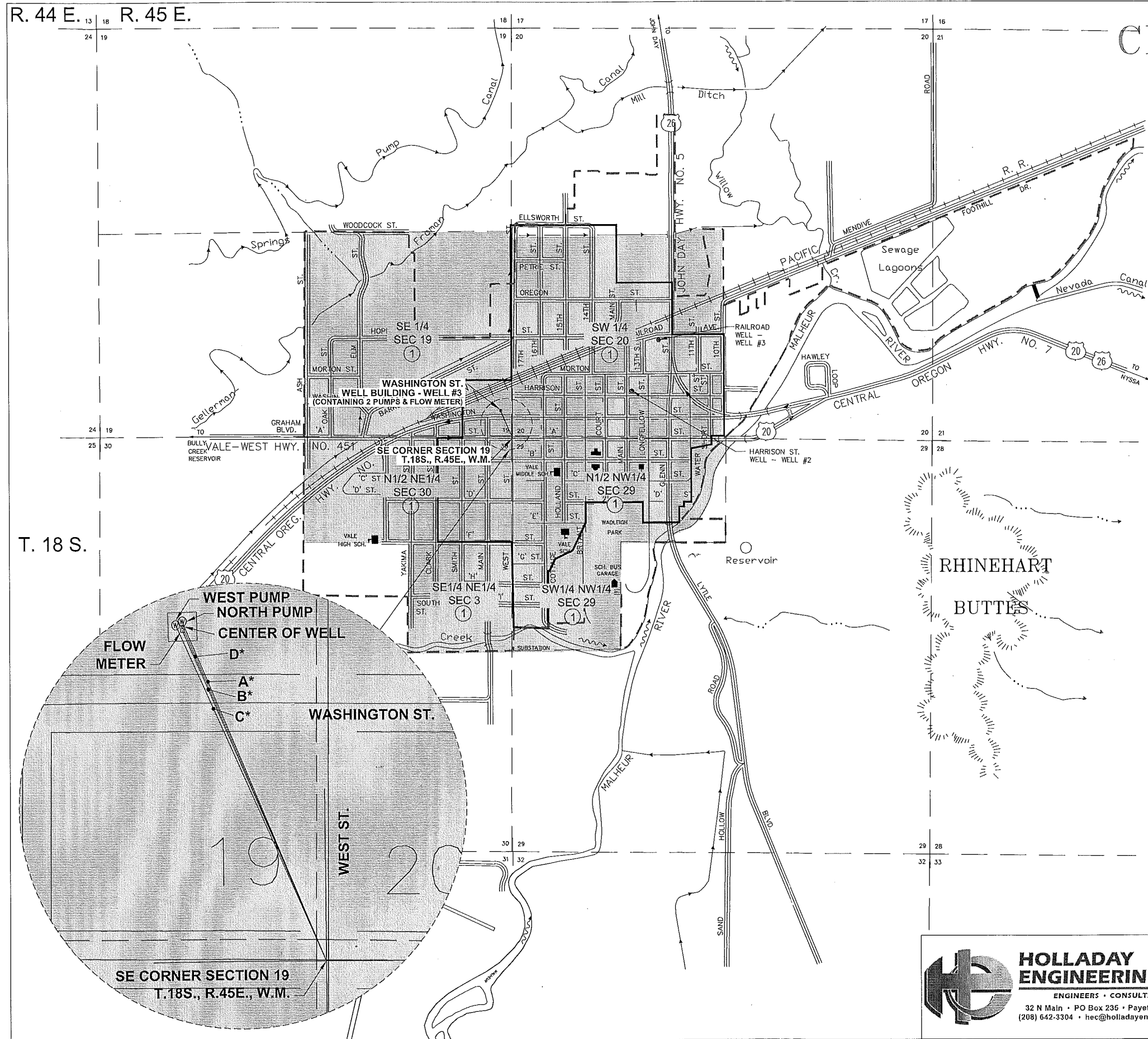


R. 44 E. 13 18 R. 45 E.

# CLAIM OF BENEFICIAL USE & SITE MAP T-8339 PERMIT G-4405

CBBU MAP# 0602

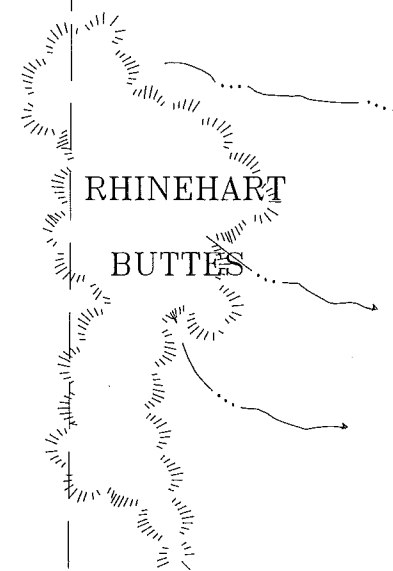
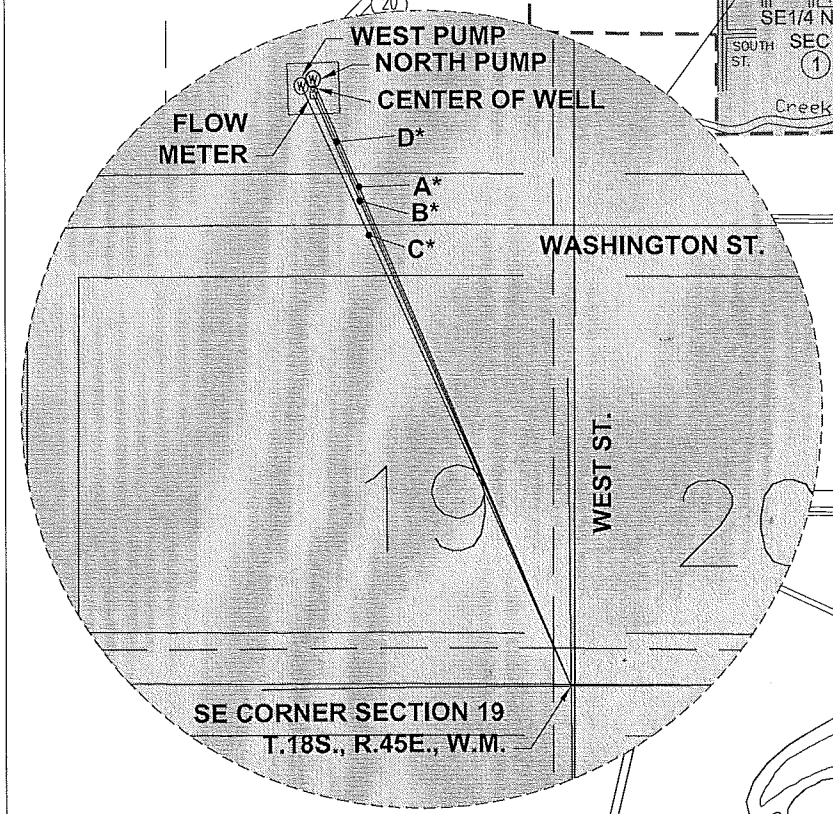


## CITY OF VALE

**LEGEND:**

---	CURRENT CITY LIMITS
---	CITY BOUNDARY DURING 1927 ADJUDICATION
~>	RIVER FLOW DIRECTION
->	IRRIGATION DITCH FLOW DIRECTION
①	PERMIT NO G-4405
A*	(NORTH PUMP) N22°48'57"W 387.50'
B*	(FLOW METER) N23°19'51"W 378.76'
C*	(WEST PUMP) N23°56'53"W 386.69'
D*	(CENTER OF WELL) N23°05'59"W 382.60'

T. 18 S.



Certified Water Right Examiner  
#069  
**DRAFT**  
Michael E. Holladay  
Nov. 19, 1987  
STATE OF OREGON

REVISED: DECEMBER 14, 2011

**HOLLADAY ENGINEERING CO.**  
ENGINEERS • CONSULTANTS  
32 N Main • PO Box 235 • Payette, ID 83661  
(208) 642-3304 • hec@holladayengineering.com

### WATER RIGHTS MAP CITY OF VALE, OREGON