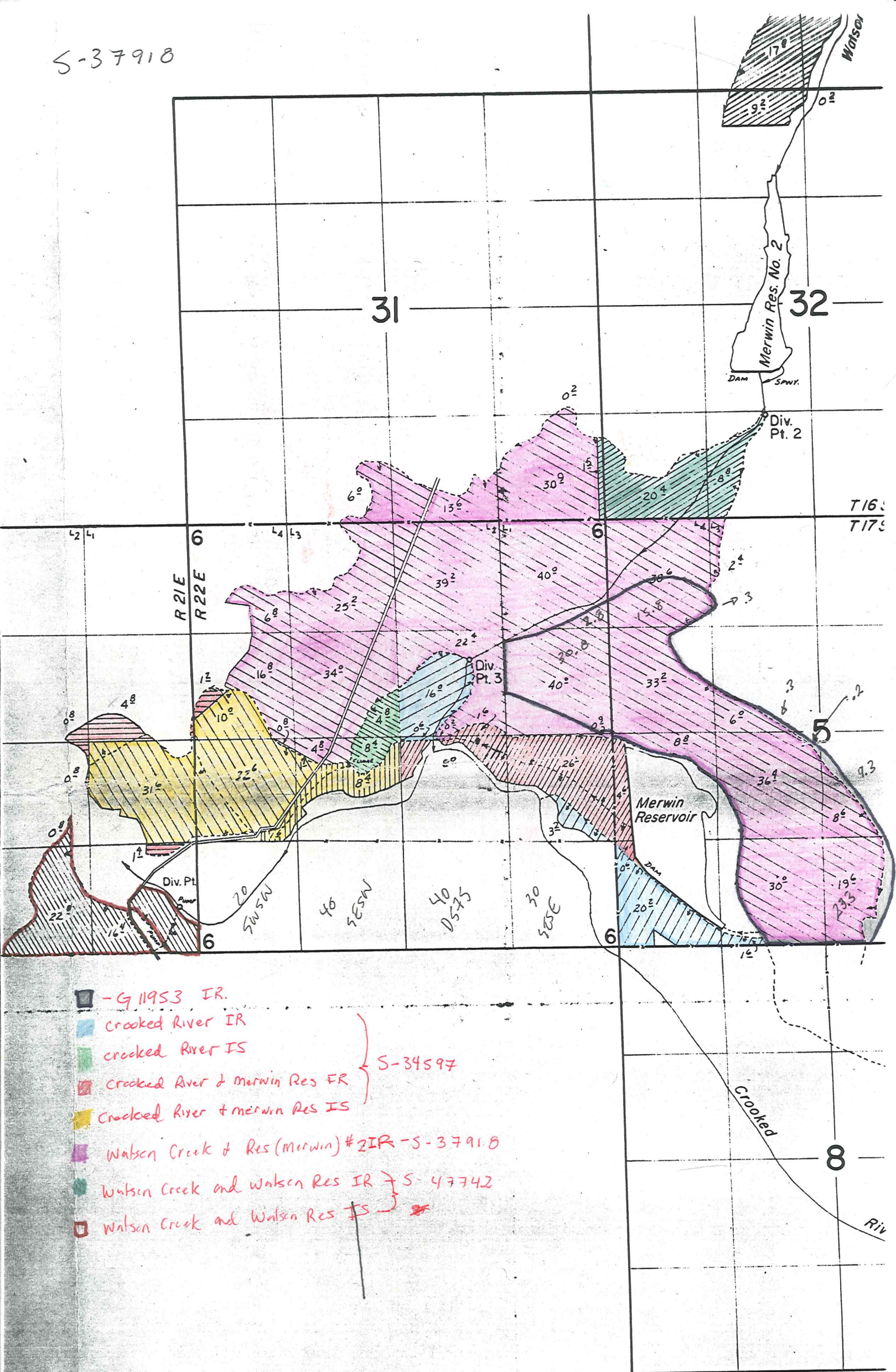


S-37918



- - G. 11953 IR.
- Crooked River IR
- Crooked River IS
- Crooked River & Merwin Res FR
- Crooked River & Merwin Res IS
- Watson Creek & Res (Merwin) #2 IR - S-37918
- Watson Creek and Watson Res IR } S-47742
- Watson Creek and Watson Res IS } S-47742