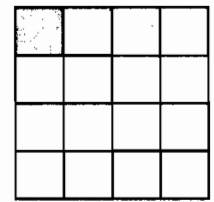
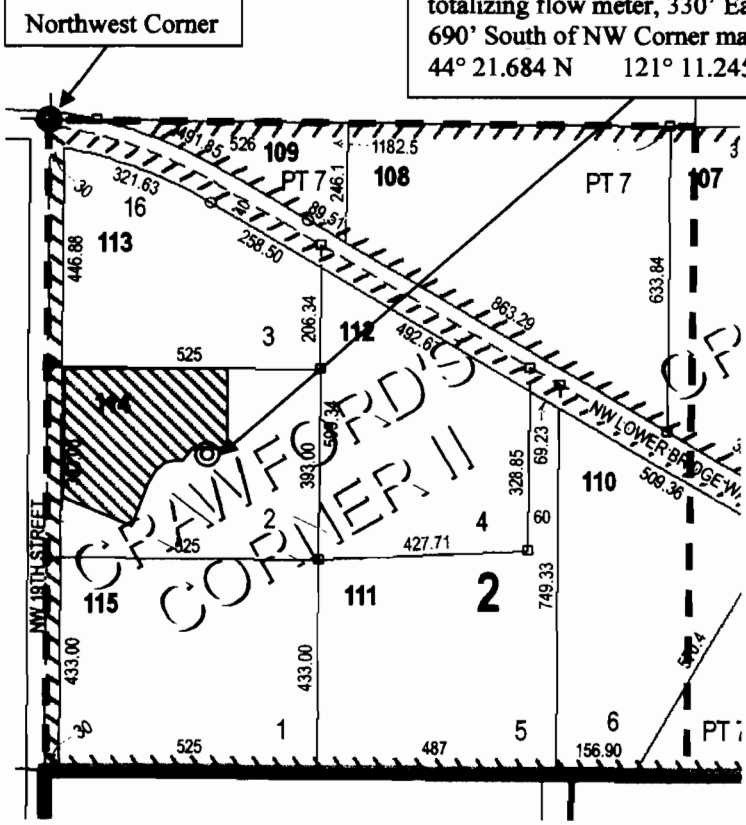





This map is not intended to provide legal dimensions or locations of property ownership lines.

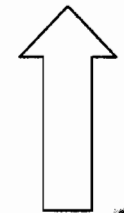
POA, submersible pump with totalizing flow meter, 330' East, 690' South of NW Corner marker.
 $44^\circ 21.684\text{ N}$ $121^\circ 11.245\text{ W}$



T14S, R13E
 Section 16
 NWNW - 2.0 acres irrigated

-  Place of Use
-  Point of Appropriation (POA)
-  Corner Marker

NORTH



RECEIVED

Donna Robison Claim of Beneficial Use Map for Application G-16579, Permit G-16232

T14S R13E, Section 16, NWNW, Tax Lot 114

Deschutes County, OR - February 15, 2012

Scale 1" = 400'

Water Right Services, LLC

John A. Short
 P.O. Box 1830
 Bend, OR 97709
 541-408-7415
johnshort@usa.com
www.oregonwater.us

