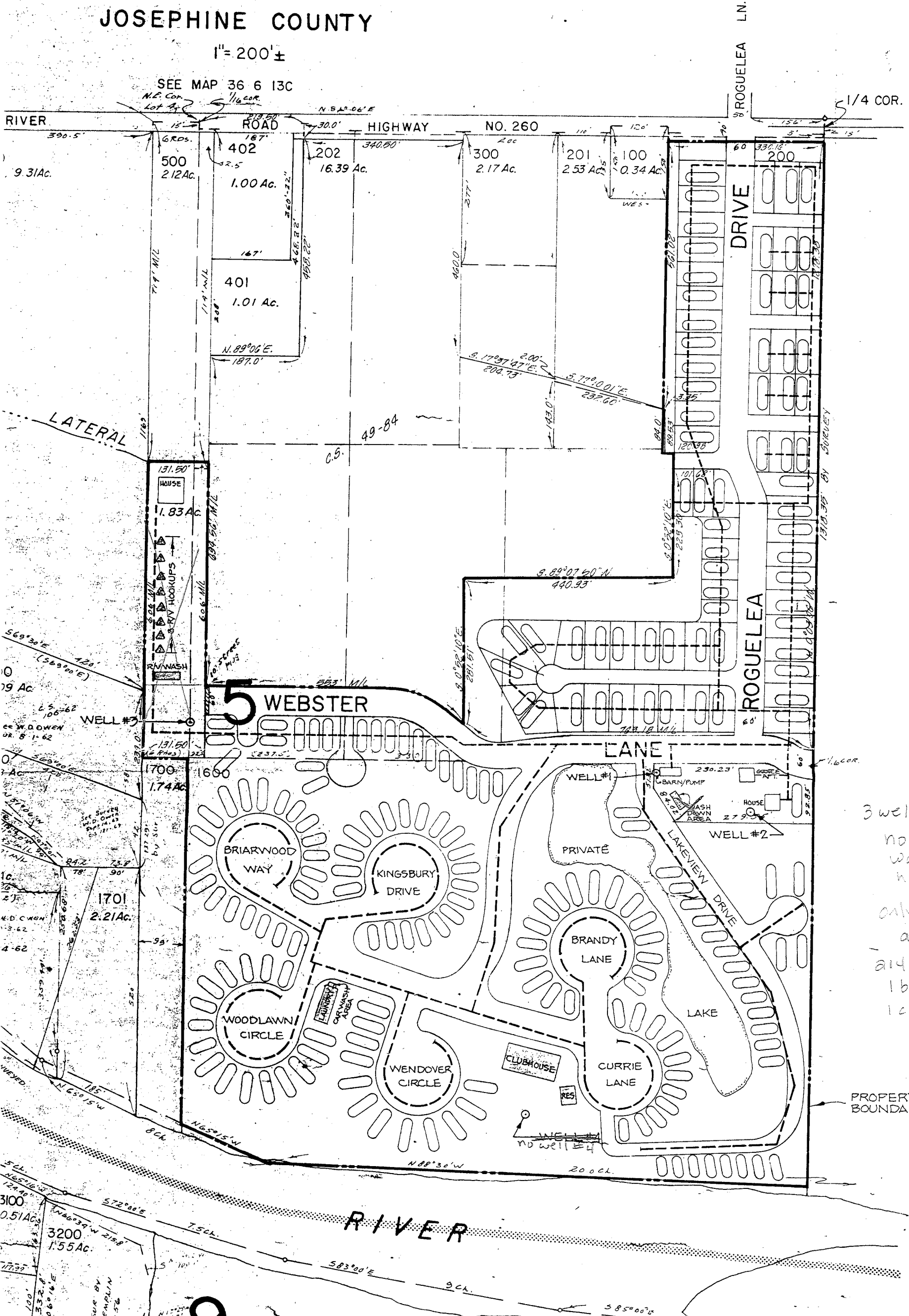


NW 1/4 SEC 24 T36S R6W W.M

JOSEPHINE COUNTY

1" = 200' ±

SEE MAP 36 6 13C



SCALE 1" = 200' ±

3 wells (no #4)
 no RV wash or hookups
 only 1 car wash area
 214 family sites
 1 barn
 1 clubhouse

PROPERTY BOUNDARY

WELL LOCATIONS:

- ALL LOCATIONS ARE REFERENCED TO THE N 1/4 CORNER OF SEC. 24.
- #1- 1379.31 FT. SOUTH & 290.40 FT. WEST
 - #2- 1457.02 FT. SOUTH & 134.34 FT. WEST
 - #3- 1270.00 FT. SOUTH & 1315.00 FT. WEST

LEGEND:

- MOBILE HOME
- COMMUNITY SERVICE AREA

EXHIBIT "W-W"

ROBERT S. BLANTON, P.E.
 CONSULTING ENGINEERING
 170 W. NINTH ST. MEDFORD, OREGON

ROGUE LEA ESTATES

RECEIVED

OCT 28 2011

WATER RESOURCES DEPT
 SALEM, OREGON

G-71593