

# Claim of Beneficial Use Map

SECTION 28 , 29, T5S, R4W, WM  
 YAMHILL COUNTY, OREGON  
 WILLAMETTE RIVER BASIN

Transfer T-10977

PREPARED FOR:  
 DeRaeve Family, LLC  
 Tract known as "Robison Farm"



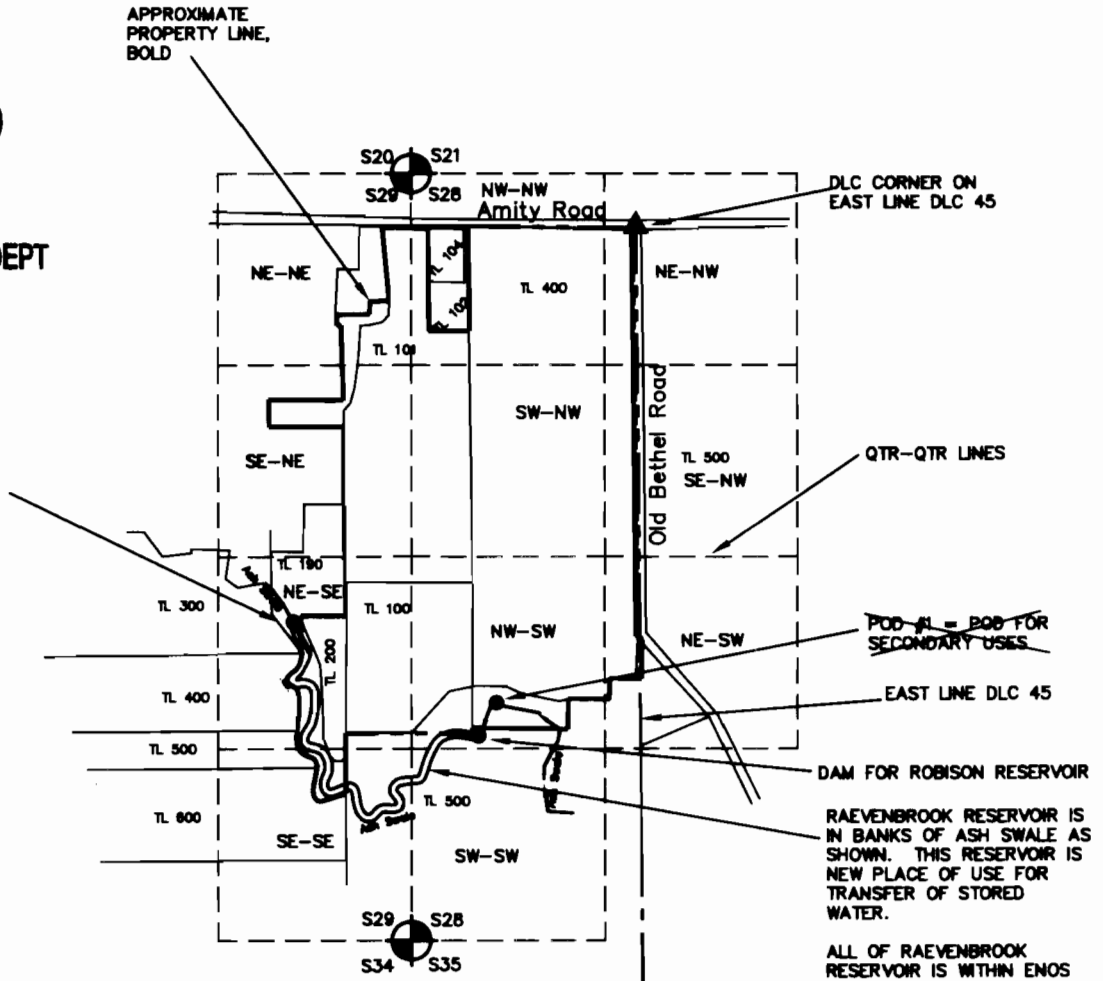
**RECEIVED**

MAR 19 2012

WATER RESOURCES DEPT  
 SALEM, OREGON

POD #2 = DAM FOR  
 RAEVENBROOK RESERVOIR. AND  
 ADDITIONAL POD FOR  
 SECONDARY USES.

THE STAFF GAUGE IS MOUNTED  
 ON THE WEST SIDE OF THE  
 BRACKET FOR THE VALVE BEING  
 EAST OF THE FLASH BOARDS  
 ON THE DAM.



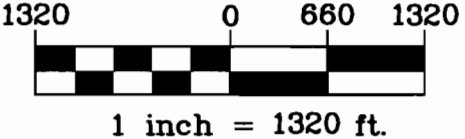
SECTION CORNER AND MAP SCALE POINT  
 DLC CORNER  
  
 POD; COORDINATES AS FOLLOWS:  
~~POD #1 1846' N, 580' E.~~  
 DAM/POD #2 2190 N, 810 W;  
 OF THE SW CORNER OF S28

NOTE: POD COORDINATES AND IRRIGATION ACRES VARY FROM PRIOR MAPS. THIS IS BECAUSE OF BETTER AERIAL PHOTOS, MAPPING ACCURACY, AND CHANGES IN OWNERSHIP.



Project: 306-2-022  
 Drawing: 3062022J.dwg  
 By: EAU  
 Checked by: EAU  
 Date: 15MAR2012

THIS MAP WAS PREPARED FOR THE PURPOSE OF IDENTIFYING THE LOCATION OF A WATER RIGHT ONLY AND IS NOT INTENDED TO PROVIDE LEGAL DIMENSIONS OR LOCATION OF PROPERTY OWNERSHIP LINES.



MAP BASE:  
 YAMHILL COUNTY TAX MAPS 28&29 T5S,  
 R4W AND AUG 2004 GOOGLE AERIAL  
 PHOTO